



## Rabbit Anti-ADAM17 antibody

SL4236R

<b>Product Name:</b>	ADAM17
<b>Chinese Name:</b>	Tumour坏死因子 $\alpha$ 转换酶抗体
<b>Alias:</b>	A disintegrin and metalloproteinase domain 17; ADAM 17; ADAM metalloproteinase domain 17; ADAM17 protein; CD 156b; CD156b; CD156b antigen; CSVP; MGC71942; Snake venom like protease; TACE; TNF alpha convertase; TNF alpha converting enzyme; Tumor Necrosis Factor Alpha Converting Enzyme; A disintegrin and metalloproteinase domain 17 (tumor necrosis factor, alpha, converting enzyme); ADA17 HUMAN.
<b>文献引用</b> <b>PubMed</b> :	<b>Specific References(1)</b>  SL4236R has been referenced in 1 publications. <b>[IF=2.08]</b> Li, Qing, et al. "Identification of ADAM10 and ADAM17 with potential roles in the spermatogenesis of the Chinese mitten crab, Eriocheir sinensis." Gene(2015). <b>WB</b> ; <a href="#">PubMed:25703701</a>
<b>Organism Species:</b>	Rabbit
<b>Clonality:</b>	Polyclonal
<b>React Species:</b>	Human,Mouse,Rat,Dog,Pig,Cow,Rabbit,
<b>Applications:</b>	WB=1:500-2000ELISA=1:500-1000IHC-P=1:400-800IHC-F=1:400-800Flow-Cyt=1 $\mu$ g/TestIF=1:100-500 (Paraffin sections need antigen repair) not yet tested in other applications. optimal dilutions/concentrations should be determined by the end user.
<b>Molecular weight:</b>	68/91kDa
<b>Cellular localization:</b>	The cell membrane
<b>Form:</b>	Lyophilized or Liquid
<b>Concentration:</b>	1mg/ml
<b>immunogen:</b>	KLH conjugated synthetic peptide derived from human ADAM17:201-300/824<Extracellular>
<b>Lsotype:</b>	IgG
<b>Purification:</b>	affinity purified by Protein A

<b>Storage Buffer:</b>	0.01M TBS(pH7.4) with 1% BSA, 0.03% Proclin300 and 50% Glycerol.
<b>Storage:</b>	Store at -20 °C for one year. Avoid repeated freeze/thaw cycles. The lyophilized antibody is stable at room temperature for at least one month and for greater than a year when kept at -20°C. When reconstituted in sterile pH 7.4 0.01M PBS or diluent of antibody the antibody is stable for at least two weeks at 2-4 °C.
<b>PubMed:</b>	<a href="#">PubMed</a>
<b>Product Detail:</b>	<p>This gene encodes a member of the ADAM (a disintegrin and metalloprotease domain) family. Members of this family are membrane-anchored proteins structurally related to snake venom disintegrins, and have been implicated in a variety of biologic processes involving cell-cell and cell-matrix interactions, including fertilization, muscle development, and neurogenesis. The protein encoded by this gene functions as a tumor necrosis factor-alpha converting enzyme; binds mitotic arrest deficient 2 protein; and also plays a prominent role in the activation of the Notch signaling pathway. [provided by RefSeq].</p> <p><b>Subunit:</b> Interacts with MAD2L1, MAPK14 and MUC1.</p> <p><b>Subcellular Location:</b> Membrane.</p> <p><b>Tissue Specificity:</b> Ubiquitously expressed. Expressed at highest levels in adult heart, placenta, skeletal muscle, pancreas, spleen, thymus, prostate, testes, ovary and small intestine, and in fetal brain, lung, liver and kidney.</p> <p><b>Similarity:</b> Contains 1 disintegrin domain. Contains 1 peptidase M12B domain.</p> <p><b>SWISS:</b> P78536</p> <p><b>Gene ID:</b> 6868</p> <p><b>Database links:</b></p> <p><a href="#">Entrez Gene: 6868</a> Human</p> <p><a href="#">Entrez Gene: 11491</a> Mouse</p> <p><a href="#">Entrez Gene: 57027</a> Rat</p> <p><a href="#">Oimim: 603639</a> Human</p>

[SwissProt: P78536](#) Human

[SwissProt: Q9Z0F8](#) Mouse

[SwissProt: Q9Z1K9](#) Rat

[Unigene: 404914](#) Human

[Unigene: 27681](#) Mouse

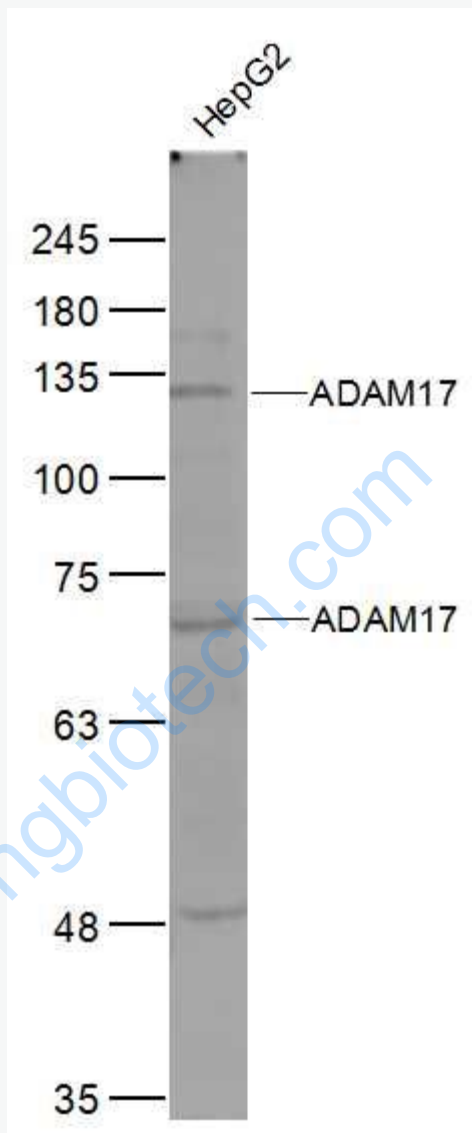
[Unigene: 144585](#) Rat

**Important Note:**

This product as supplied is intended for research use only, not for use in human, therapeutic or diagnostic applications.

[www.sunlongbiotech.com](http://www.sunlongbiotech.com)

Picture:



Sample:

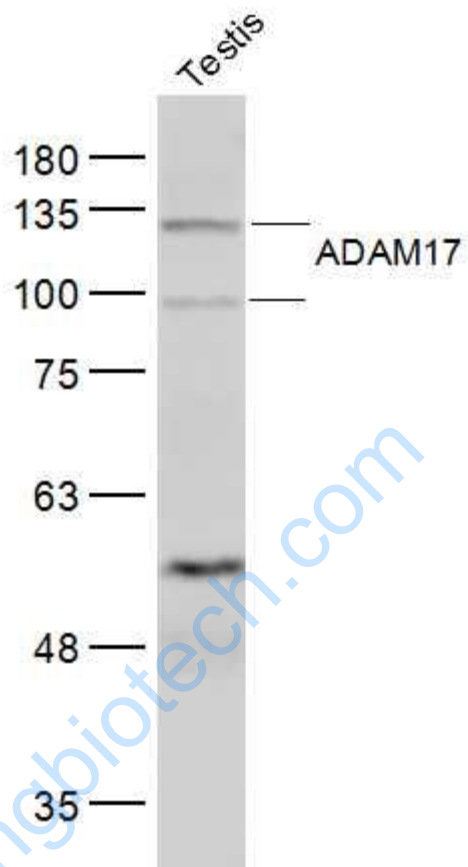
HepG2(Human) Cell Lysate at 30 ug

Primary: Anti-ADAM17 (SL4236R) at 1/500 dilution

Secondary: IRDye800CW Goat Anti-Rabbit IgG at 1/20000 dilution

Predicted band size: 68/93 kD

Observed band size: 63/120 kD



Sample:

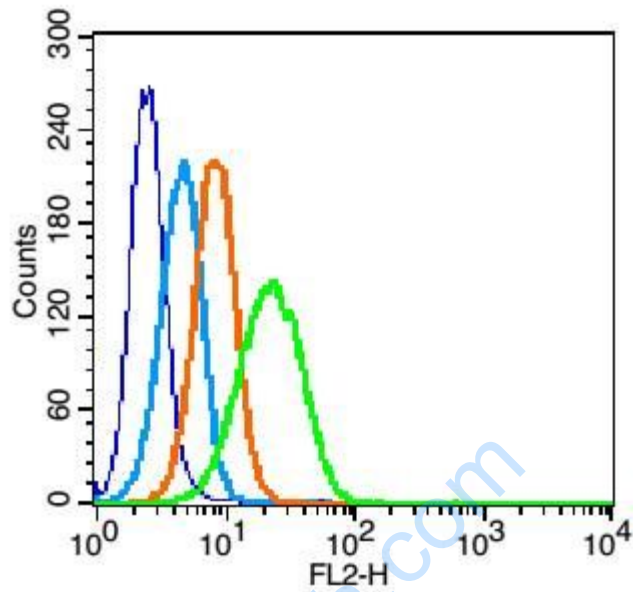
Testis (Mouse) Lysate at 40 ug

Primary: Anti-ADAM17 (SL4236R) at 1/500 dilution

Secondary: IRDye800CW Goat Anti-Rabbit IgG at 1/20000 dilution

Predicted band size: 68/93 kD

Observed band size: 93/120 kD



Blank control: U937 (fixed with 2% paraformaldehyde (10 min)).

Primary Antibody: Rabbit Anti-ADAM17 antibody(SL4236R), Dilution: 1 $\mu$ g in 100  $\mu$ L 1X PBS containing 0.5% BSA;

Isotype Control Antibody: Rabbit IgG(orange) ,used under the same conditions );

Secondary Antibody: Goat anti-rabbit IgG-PE(white blue), Dilution: 1:200 in 1 X PBS containing 0.5% BSA.