




Rabbit Anti-GLUT8 antibody

SL4241R

Product Name:	GLUT8
Chinese Name:	葡萄糖Transporter8抗体
Alias:	Glucose Transporter 8; Glucose transporter type 8; Glucose transporter type X1; GLUT-8; GLUT 8; GLUTX1; SLC2A8; solute carrier family 2 (facilitated glucose transporter) member 8.
文献引用 	<p>Specific References(5) SL4241R has been referenced in 5 publications.</p> <p>[IF=3.23]Jackson EE, Rendina-Ruedy E, Smith BJ, Lacombe VA (2015) Loss of Toll-Like Receptor 4 Function Partially Protects against Peripheral and Cardiac Glucose Metabolic Derangements During a Long-Term High-Fat Diet. PLoS ONE 10(11): e0142077.WB;Mouse. PubMed:26539824</p> <p>[IF=3.23]Maria Z, Campolo AR, Lacombe VA (2015) Diabetes Alters the Expression and Translocation of the Insulin-Sensitive Glucose Transporters 4 and 8 in the Atria. PLoS ONE 10(12): e0146033.WB;Mouse. PubMed:26720696</p> <p>[IF=3.05]Murakami, Ryuta, et al. "Immunoreactivity of glucose transporter 8 is localized in the epithelial cells of the choroid plexus and in ependymal cells." Histochemistry and Cell Biology (2016):1-6.WB, IHC-P, IHC-F;Human, Mouse. PubMed:27160096</p> <p>[IF=1.58]Gao, Sujie, et al. "Propofol inhibits growth of neurons through regulating insulin receptor and insulin-like growth factor-1 receptor." Int J Clin Exp Pathol 9.7 (2016): 6785-6794.WB;Rat.</p>

	<p style="text-align: right;">PubMed:0</p> <p>[IF=2.11] Mashima, Masato, et al. "Glucose transporter 8 immunoreactivity in astrocytic and microglial cells in subependymal areas of human brains." Neuroscience Letters (2016). IHC-P;Human.</p> <p style="text-align: right;">PubMed:27818355</p>
Organism Species:	Rabbit
Clonality:	Polyclonal
React Species:	Human, Mouse, Rat,
Applications:	WB=1:500-2000 ELISA=1:500-1000 not yet tested in other applications. optimal dilutions/concentrations should be determined by the end user.
Molecular weight:	52kDa
Cellular localization:	cytoplasmic The cell membrane
Form:	Lyophilized or Liquid
Concentration:	1mg/ml
immunogen:	KLH conjugated synthetic peptide derived from human GLUT8:401-477/477<Extracellular>
Isotype:	IgG
Purification:	affinity purified by Protein A
Storage Buffer:	0.01M TBS(pH7.4) with 1% BSA, 0.03% Proclin300 and 50% Glycerol.
Storage:	Store at -20 °C for one year. Avoid repeated freeze/thaw cycles. The lyophilized antibody is stable at room temperature for at least one month and for greater than a year when kept at -20°C. When reconstituted in sterile pH 7.4 0.01M PBS or diluent of antibody the antibody is stable for at least two weeks at 2-4 °C.
PubMed:	PubMed
Product Detail:	<p>Glucose transporter 8 is an insulin-regulated facilitative glucose transporter. It binds cytochalasin B in a glucose-inhibitable manner. It appears to be a dual-specific sugar transporter as it can be inhibited by fructose. It is highly expressed in testis, where it is down-regulated by estrogen, but not in testicular carcinoma. Lower amounts are present in most other tissues.</p> <p>Subunit: Interacts with AP2B1.</p> <p>Subcellular Location: Cell membrane; Multi-pass membrane protein. Cytoplasmic vesicle membrane; Multi-pass membrane protein. Note=Principally intracellular. May move between intracellular vesicles and the plasma membrane. The dileucine internalization motif is critical for intracellular sequestration. Insulin induces a change in the intracellular localization and gives rise to insertion in the plasma membrane.</p> <p>Tissue Specificity: Highest level of expression in placenta and testis. Highly expressed in adult and pubertal</p>

testis, but not prepubertal testis. Lower levels of expression in brain, liver, heart, kidney, fat and skeletal muscle.

Similarity:

Belongs to the major facilitator superfamily. Sugar transporter (TC 2.A.1.1) family. Glucose transporter subfamily.

SWISS:

Q9NY64

Gene ID:

29988

Database links:

[Entrez Gene: 29988](#) Human

[Entrez Gene: 56017](#) Mouse

[Entrez Gene: 85256](#) Rat

[Omim: 605245](#) Human

[SwissProt: Q9NY64](#) Human

[SwissProt: Q9JIF3](#) Mouse

[SwissProt: Q9JJZ1](#) Rat

[Unigene: 179522](#) Human

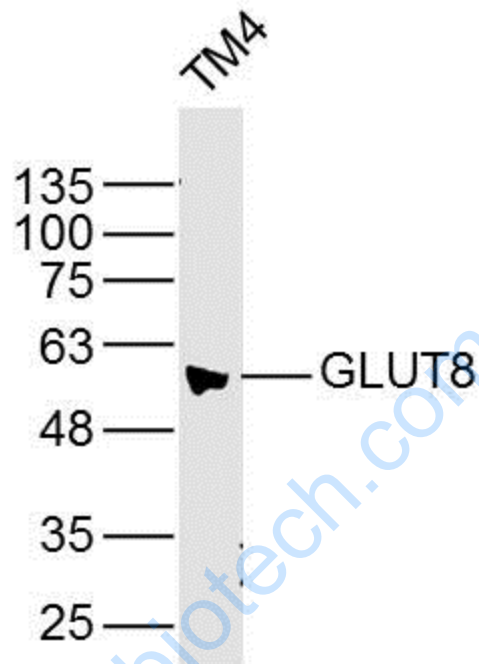
[Unigene: 305754](#) Mouse

[Unigene: 12923](#) Rat

Important Note:

This product as supplied is intended for research use only, not for use in human, therapeutic or diagnostic applications.

Picture:



Sample: TM4 Cell (Mouse) Lysate at 40 ug

Primary: Anti- GLUT8 (SL4241R) at 1/300 dilution

Secondary: IRDye800CW Goat Anti-Rabbit IgG at 1/20000 dilution

Predicted band size: 52 kD

Observed band size: 52 kD