



Rabbit Anti-LONP1 antibody

SL4245R

Product Name:	LONP1
Chinese Name:	Mitochondrion 离子肽酶1 抗体
Alias:	Serine protease 15; hLON ATP dependent protease; Lon protease like protein; LonHS; LONP; PIM1; PRSS15; hLON; LON; lon peptidase 1, mitochondrial; LON protease; Mitochondrial ATP dependent protease Lon; Mitochondrial Ion peptidase 1; Protease serine 15.
Organism Species:	Rabbit
Clonality:	Polyclonal
React Species:	Human,Mouse,Rat,Chicken,Dog,Pig,Cow,Horse,
Applications:	ELISA=1:500-1000IHC-P=1:400-800IHC-F=1:400-800IF=1:100-500 (Paraffin sections need antigen repair) not yet tested in other applications. optimal dilutions/concentrations should be determined by the end user.
Molecular weight:	98kDa
Cellular localization:	cytoplasmic
Form:	Lyophilized or Liquid
Concentration:	1mg/ml
immunogen:	KLH conjugated synthetic peptide derived from human LONP1:361-460/959
Lsotype:	IgG
Purification:	affinity purified by Protein A
Storage Buffer:	0.01M TBS(pH7.4) with 1% BSA, 0.03% Proclin300 and 50% Glycerol.
Storage:	Store at -20 °C for one year. Avoid repeated freeze/thaw cycles. The lyophilized antibody is stable at room temperature for at least one month and for greater than a year when kept at -20°C. When reconstituted in sterile pH 7.4 0.01M PBS or diluent of antibody the antibody is stable for at least two weeks at 2-4 °C.
PubMed:	PubMed
Product Detail:	LONP1 encodes a mitochondrial matrix protein in the Lon family of ATP dependent proteases. It binds a specific sequence in the light and heavy chain promoters of the mitochondrial genome which are involved in regulation of DNA replication and transcription.

Subunit:

Homohexamer or homoheptamer. Organized in a ring with a central cavity. DNA and RNA binding is stimulated by substrate and inhibited by ATP binding. Interacts with PEO1 and mitochondrial DNA polymerase subunit POLG.

Subcellular Location:

Mitochondrion matrix.

Tissue Specificity:

Duodenum, heart, lung and liver, but not thymus.

Similarity:

Belongs to the peptidase S16 family.
Contains 1 Lon domain.

SWISS:

P36776

Gene ID:

9361

Database links:

[Entrez Gene: 510796](#)Cow

[Entrez Gene: 9361](#)Human

[Entrez Gene: 74142](#)Mouse

[Entrez Gene: 170916](#)Rat

[Omim: 605490](#)Human

[SwissProt: Q59HJ6](#)Cow

[SwissProt: P36776](#)Human

[SwissProt: Q8CGK3](#)Mouse

[SwissProt: Q924S5](#)Rat

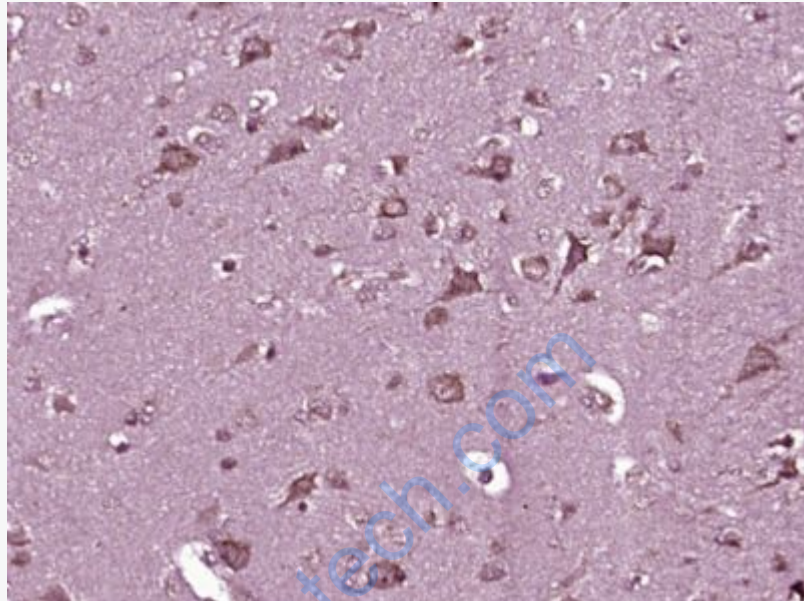
[Unigene: 350265](#)Human

[Unigene: 329136](#)Mouse

[Unigene: 146805](#)Rat

Important Note:

This product as supplied is intended for research use only, not for use in human, therapeutic or diagnostic applications.



Picture:

Paraformaldehyde-fixed, paraffin embedded (Human brain glioma); Antigen retrieval by boiling in sodium citrate buffer (pH6.0) for 15min; Block endogenous peroxidase by 3% hydrogen peroxide for 20 minutes; Blocking buffer (normal goat serum) at 37°C for 30min; Antibody incubation with (LONP1) Polyclonal Antibody, Unconjugated (SL4245R) at 1:400 overnight at 4°C, followed by operating according to SP Kit(Rabbit) (sp-0023) instructions and DAB staining.