



## Rabbit Anti-ORP150 antibody

SL4248R

<b>Product Name:</b>	ORP150
<b>Chinese Name:</b>	氧气调节蛋白150抗体
<b>Alias:</b>	150 kDa oxygen regulated protein; 150 kDa oxygen-regulated protein; 170 kDa glucose regulated protein; 170 kDa glucose-regulated protein; DKFZp686N08236; FLJ94899; FLJ97572; glucose regulated protein 170; Grp 170; GRP-170; Grp170; HSP 12A; HSP12A; Hyou1; HYOU1_HUMAN; Hypoxia up regulated 1; hypoxia up-regulated 1 precursor; Hypoxia up-regulated protein 1; Hypoxia upregulated 1; Orp 150; ORP-150; Orp150; oxygen regulated protein (150kD).
<b>文献引用</b> PubMed :	<p><b>Specific References(1)</b> SL4248R has been referenced in 1 publications.</p> <p><b>[IF=2.12]</b>Ruan Lin, et al. "Tetrandrine Attenuated Cerebral Ischemia/Reperfusion Injury and Induced Differential Proteomic Changes in a MCAO Mice Model Using 2-D DIGE." Neurochemical Research (2013). 1-9.<b>WB;Rat.</b></p> <p><a href="#">PubMed:23780673</a></p>
<b>Organism Species:</b>	Rabbit
<b>Clonality:</b>	Polyclonal
<b>React Species:</b>	Human,Mouse,Rat,Chicken,Dog,Pig,Cow,Horse,
<b>Applications:</b>	WB=1:500-2000ELISA=1:500-1000IHC-P=1:400-800IHC-F=1:400-800IF=1:100-500 (Paraffin sections need antigen repair) not yet tested in other applications. optimal dilutions/concentrations should be determined by the end user.
<b>Molecular weight:</b>	108kDa
<b>Cellular localization:</b>	cytoplasmic
<b>Form:</b>	Lyophilized or Liquid
<b>Concentration:</b>	1mg/ml
<b>immunogen:</b>	KLH conjugated synthetic peptide derived from human ORP150:401-500/999
<b>Lsotype:</b>	IgG
<b>Purification:</b>	affinity purified by Protein A

<b>Storage Buffer:</b>	0.01M TBS(pH7.4) with 1% BSA, 0.03% Proclin300 and 50% Glycerol.
<b>Storage:</b>	Store at -20 °C for one year. Avoid repeated freeze/thaw cycles. The lyophilized antibody is stable at room temperature for at least one month and for greater than a year when kept at -20°C. When reconstituted in sterile pH 7.4 0.01M PBS or diluent of antibody the antibody is stable for at least two weeks at 2-4 °C.
<b>PubMed:</b>	<a href="#">PubMed</a>
<b>Product Detail:</b>	<p>ORP150 (150KDa Oxygen-regulated Protein) is a member of the heat shock protein/stress protein family and has a pivotal role in cytoprotective cellular mechanisms triggered by oxygen deprivation. This protein has also been described as a molecular chaperone, induced by various environmental and physiological stimuli, and participates in protein folding in the endoplasmic reticulum. Furthermore, ORP150 is up-regulated in tumors and, in breast tumors, may be associated with tumor invasiveness.</p> <p><b>Function:</b> Has a pivotal role in cytoprotective cellular mechanisms triggered by oxygen deprivation. May play a role as a molecular chaperone and participate in protein folding.</p> <p><b>Subunit:</b> Part a large chaperone multiprotein complex comprising DNAJB11, HSP90B1, HSPA5, HYOU, PDIA2, PDIA4, PDIA6, PPIB, SDF2L1, UGT1A1 and very small amounts of ERP29, but not, or at very low levels, CALR nor CANX.</p> <p><b>Subcellular Location:</b> Endoplasmic reticulum lumen.</p> <p><b>Tissue Specificity:</b> Highly expressed in tissues that contain well-developed endoplasmic reticulum and synthesize large amounts of secretory proteins. Highly expressed in liver and pancreas and lower expression in brain and kidney. Also expressed in macrophages within aortic atherosclerotic plaques, and in breast cancers.</p> <p><b>Similarity:</b> Belongs to the heat shock protein 70 family.</p> <p><b>SWISS:</b> Q9Y4L1</p> <p><b>Gene ID:</b> 10525</p> <p><b>Database links:</b> <a href="#">Entrez Gene: 10525</a>Human <a href="#">Entrez Gene: 12282</a>Mouse</p>

[Entrez Gene: 192235](#)Rat

[Oimim: 601746](#)Human

[SwissProt: Q9Y4L1](#)Human

[SwissProt: Q9JKR6](#)Mouse

[SwissProt: Q63617](#)Rat

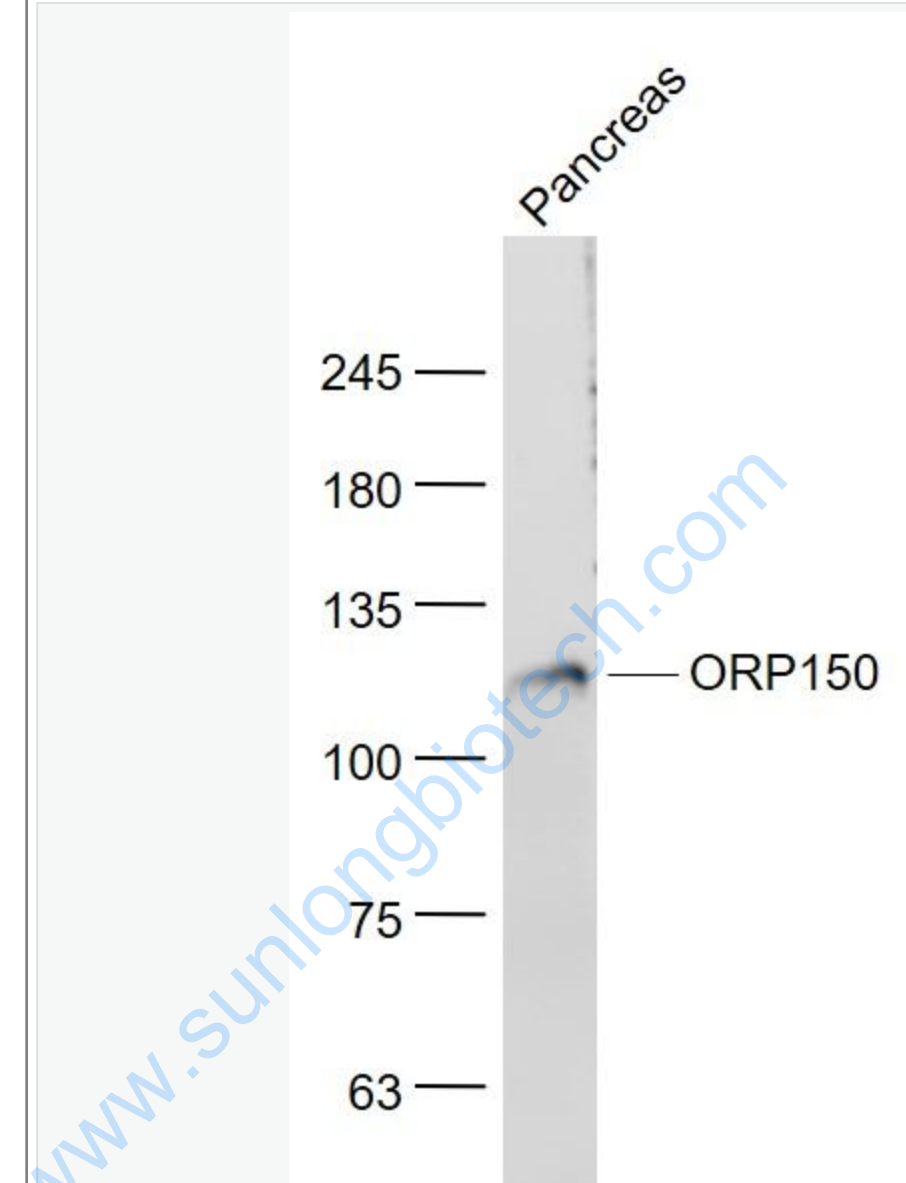
[Unigene: 277704](#)Human

**Important Note:**

This product as supplied is intended for research use only, not for use in human, therapeutic or diagnostic applications.

[www.sunlongbiotech.com](http://www.sunlongbiotech.com)

Picture:



Sample:

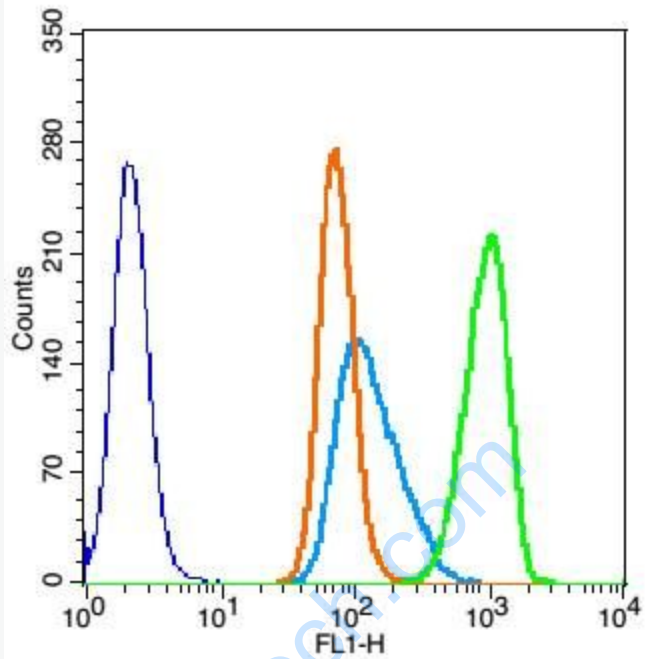
Pancreas (Mouse) Lysate at 40 ug

Primary: Anti- ORP150 (SL4248R) at 1/1000 dilution

Secondary: IRDye800CW Goat Anti-Rabbit IgG at 1/20000 dilution

Predicted band size: 108 kD

Observed band size: 108 kD



Blank control: U937(blue)

Isotype Control Antibody: Rabbit IgG(orange) ; Secondary Antibody: Goat anti-rabbit IgG-FITC(white blue), Dilution: 1:100 in 1 X PBS containing 0.5% BSA ;

Primary Antibody Dilution: 5 $\mu$ l in 100  $\mu$ l 1X PBS containing 0.5% BSA(green).