



Rabbit Anti-Ube2B antibody

SL4257R

Product Name:	Ube2B
Chinese Name:	Ubiquitin激活酶2B抗体
Alias:	hHR6B; HR6B; RAD6 homolog B; RAD6B; UBE2B; UBE2B_HUMAN; Ubiquitin carrier protein B; Ubiquitin conjugating enzyme E2 B; Ubiquitin protein ligase B; Ubiquitin-conjugating enzyme E2 17 kDa; Ubiquitin-conjugating enzyme E2 B; Ubiquitin-conjugating enzyme E2-17 kDa; Ubiquitin-protein ligase B.
Organism Species:	Rabbit
Clonality:	Polyclonal
React Species:	Human,Mouse,Rat,Pig,
Applications:	ELISA=1:500-1000IHC-P=1:400-800IHC-F=1:400-800Flow-Cyt=1μg/TestIF=1:100-500 (Paraffin sections need antigen repair) not yet tested in other applications. optimal dilutions/concentrations should be determined by the end user.
Molecular weight:	17kDa
Cellular localization:	The nucleusThe cell membrane
Form:	Lyophilized or Liquid
Concentration:	1mg/ml
immunogen:	KLH conjugated synthetic peptide derived from human Ube2B:1-100/152
Lsotype:	IgG
Purification:	affinity purified by Protein A
Storage Buffer:	0.01M TBS(pH7.4) with 1% BSA, 0.03% Proclin300 and 50% Glycerol.
Storage:	Store at -20 °C for one year. Avoid repeated freeze/thaw cycles. The lyophilized antibody is stable at room temperature for at least one month and for greater than a year when kept at -20°C. When reconstituted in sterile pH 7.4 0.01M PBS or diluent of antibody the antibody is stable for at least two weeks at 2-4 °C.
PubMed:	PubMed
Product Detail:	Accepts ubiquitin from the E1 complex and catalyzes its covalent attachment to other proteins. In association with the E3 enzyme BRE1 (RNF20 and/or RNF40), it plays a role in transcription regulation by catalyzing the monoubiquitination of histone H2B at 'Lys-120' to form H2BK120ub1. H2BK120ub1 gives a specific tag for epigenetic

transcriptional activation, elongation by RNA polymerase II, telomeric silencing, and is also a prerequisite for H3K4me and H3K79me formation. In vitro catalyzes 'Lys-11'-, as well as 'Lys-48'- and 'Lys-63'-linked polyubiquitination. Required for postreplication repair of UV-damaged DNA. Associates to the E3 ligase RAD18 to form the UBE2B-RAD18 ubiquitin ligase complex involved in mono-ubiquitination of DNA-associated PCNA on 'Lys-164'. May be involved in neurite outgrowth.

Function:

Accepts ubiquitin from the E1 complex and catalyzes its covalent attachment to other proteins. In association with the E3 enzyme BRE1 (RNF20 and/or RNF40), it plays a role in transcription regulation by catalyzing the monoubiquitination of histone H2B at 'Lys-120' to form H2BK120ub1. H2BK120ub1 gives a specific tag for epigenetic transcriptional activation, elongation by RNA polymerase II, telomeric silencing, and is also a prerequisite for H3K4me and H3K79me formation. In vitro catalyzes 'Lys-11'-, as well as 'Lys-48'- and 'Lys-63'-linked polyubiquitination. Required for postreplication repair of UV-damaged DNA. Associates to the E3 ligase RAD18 to form the UBE2B-RAD18 ubiquitin ligase complex involved in mono-ubiquitination of DNA-associated PCNA on 'Lys-164'. May be involved in neurite outgrowth.

Subunit:

Interacts with RAD18, UBR2 and WAC.

Subcellular Location:

Cell membrane (By similarity). Nucleus (By similarity). Note=In peripheral neurons, expressed both at the plasma membrane and in nuclei (By similarity).

Similarity:

Belongs to the ubiquitin-conjugating enzyme family.

SWISS:

P63146

Gene ID:

7320

Database links:

[Entrez Gene: 7320](#)Human

[Entrez Gene: 22210](#)Mouse

[Entrez Gene: 81816](#)Rat

[Omim: 179095](#)Human

[SwissProt: P63146](#)Human

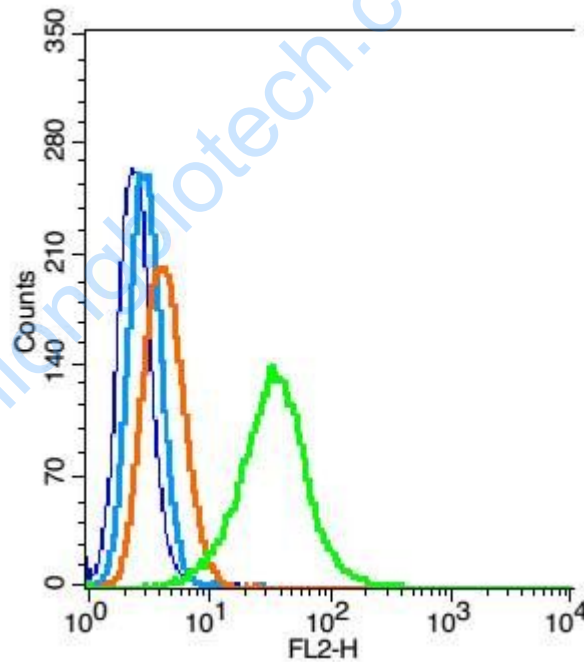
[SwissProt: P63147](#)Mouse

[SwissProt: P63149](#)Rat
[Unigene: 612096](#)Human
[Unigene: 644421](#)Human
[Unigene: 384918](#)Mouse
[Unigene: 20766](#)Rat

Important Note:

This product as supplied is intended for research use only, not for use in human, therapeutic or diagnostic applications.

Picture:



Blank control: Hela(blue), the cells were fixed with 2% paraformaldehyde (10 min) and then permeabilized with ice-cold 90% methanol for 30 min on ice..

Isotype Control Antibody: Rabbit IgG(orange) ; Secondary Antibody: Goat anti-rabbit IgG-FITC(white blue), Dilution: 1:200 in 1 X PBS containing 0.5% BSA ;

Primary Antibody Dilution: 1 μ g in 100 μ L 1X PBS containing 0.5% BSA(green).

