



Rabbit Anti-APH1a antibody

SL4259R

Product Name:	APH1a
Chinese Name:	早老素 γ 分泌酶抗体
Alias:	Anterior Pharynx Defective 1; Anterior pharynx defective 1 homolog A; APH 1A; Aph 1alpha; APH-1a; Aph-1alpha; Aph1a; APH1A_HUMAN; CGI 78; CGI78; Gamma secretase subunit APH 1A; Gamma Secretase Subunit APH1a; Gamma-secretase subunit APH-1A; Likely ortholog of <i>C. elegans</i> anterior pharynx defective 1A; Presenilin Stabilization Factor; Presenilin-stabilization factor; PSF; UNQ579/PRO1141.
Organism Species:	Rabbit
Clonality:	Polyclonal
React Species:	Human,Mouse,Rat,Dog,Pig,Cow,Horse,Rabbit,
Applications:	WB=1:500-2000ELISA=1:500-1000IHC-P=1:400-800IHC-F=1:400-800Flow-Cyt=1ug/TestIF=1:100-500 (Paraffin sections need antigen repair) not yet tested in other applications. optimal dilutions/concentrations should be determined by the end user.
Molecular weight:	30kDa
Cellular localization:	cytoplasmicThe cell membrane
Form:	Lyophilized or Liquid
Concentration:	1mg/ml
immunogen:	KLH conjugated synthetic peptide derived from human APH1a:71-170/265
Lsotype:	IgG
Purification:	affinity purified by Protein A
Storage Buffer:	0.01M TBS(pH7.4) with 1% BSA, 0.03% Proclin300 and 50% Glycerol.
Storage:	Store at -20 °C for one year. Avoid repeated freeze/thaw cycles. The lyophilized antibody is stable at room temperature for at least one month and for greater than a year when kept at -20°C. When reconstituted in sterile pH 7.4 0.01M PBS or diluent of antibody the antibody is stable for at least two weeks at 2-4 °C.
PubMed:	PubMed
Product Detail:	APH1a is an essential subunit of the gamma-secretase complex, an endoprotease complex that catalyzes the intramembrane cleavage of integral proteins such as Notch receptors and APP (beta-amyloid precursor protein). It probably represents a stabilizing

cofactor for the presenilin homodimer that promotes the formation of a stable complex. Belongs to the APH-1 family.

Function:

Essential subunit of the gamma-secretase complex, an endoprotease complex that catalyzes the intramembrane cleavage of integral proteins such as Notch receptors and APP (beta-amyloid precursor protein). It probably represents a stabilizing cofactor for the presenilin homodimer that promotes the formation of a stable complex.

Subcellular Location:

Endoplasmic reticulum membrane.

Tissue Specificity:

Widely expressed. Expressed in leukocytes, lung, placenta, small intestine, liver, kidney, spleen thymus, skeletal muscle, heart and brain. Isoform 1 and isoform 2 are nearly expressed at the same level.

Similarity:

Belongs to the APH-1 family.

SWISS:

Q96BI3

Gene ID:

51107

Database links:

[Entrez Gene: 539247](#) Cow

[Entrez Gene: 483181](#) Dog

[Entrez Gene: 51107](#) Human

[Entrez Gene: 226548](#) Mouse

[Entrez Gene: 365872](#) Rat

[Omim: 607629](#) Human

[SwissProt: Q96BI3](#) Human

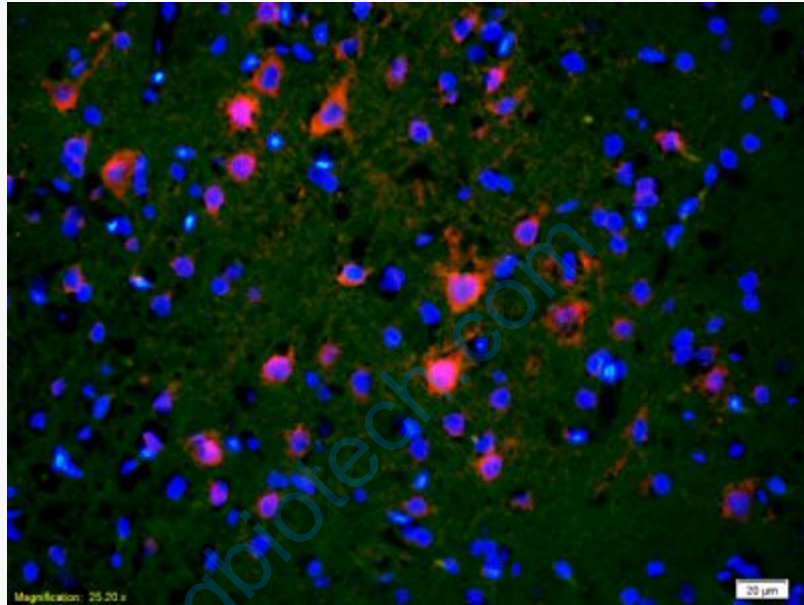
[SwissProt: Q8BVF7](#) Mouse

[Unigene: 108408](#) Human

[Unigene: 306954](#) Mouse

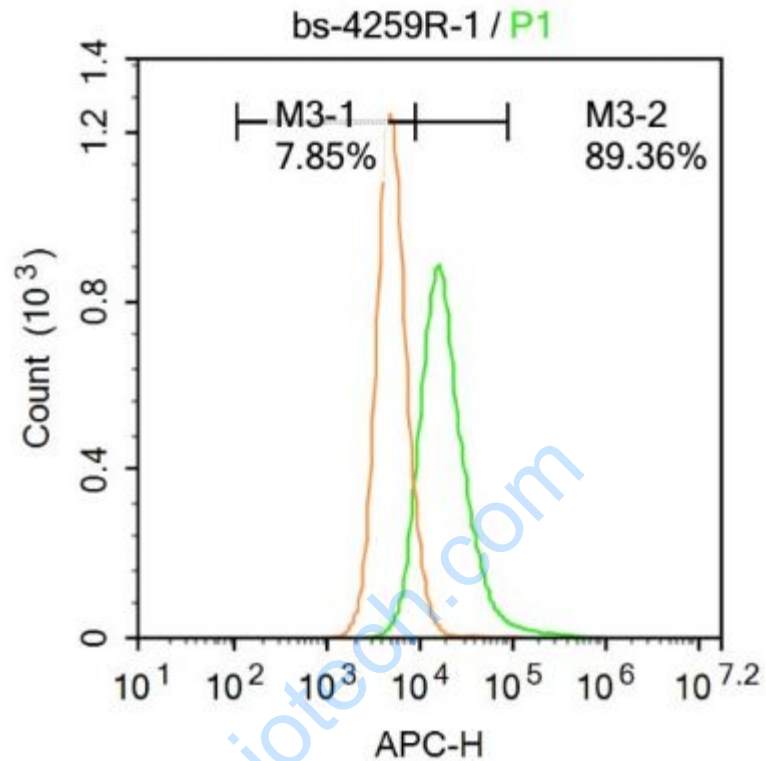
Important Note:

This product as supplied is intended for research use only, not for use in human, therapeutic or diagnostic applications.



Picture:

Tissue/cell: rat brain tissue;4% Paraformaldehyde-fixed and paraffin-embedded;
Antigen retrieval: citrate buffer (0.01M, pH 6.0), Boiling bathing for 15min;
Blocking buffer (normal goat serum,C-0005) at 37°C for 20 min;
Incubation: Anti-APH1a Polyclonal Antibody, Unconjugated(SL4259R) 1:200,
overnight at 4°C; The secondary antibody was Goat Anti-Rabbit IgG, Cy3
conjugated(SL4259R)used at 1:200 dilution for 40 minutes at 37°C.
DAPI(5ug/ml,blue,C-0033) was used to stain the cell nuclei



Blank control: A431.

Primary Antibody (green line): Rabbit Anti-APH1a antibody (SL4259R)

Dilution: $1\mu\text{g} / 10^6$ cells;

Isotype Control Antibody (orange line): Rabbit IgG .

Secondary Antibody: Goat anti-rabbit IgG-AF647

Dilution: $1\mu\text{g} / \text{test}$.

Protocol

The cells were incubated in 5%BSA to block non-specific protein-protein interactions for 30 min at room temperature .Cells stained with Primary Antibody for 30 min at room temperature. The secondary antibody used for 40 min at room temperature. Acquisition of 20,000 events was performed.

