



Rabbit Anti-E2F8 antibody

SL4265R

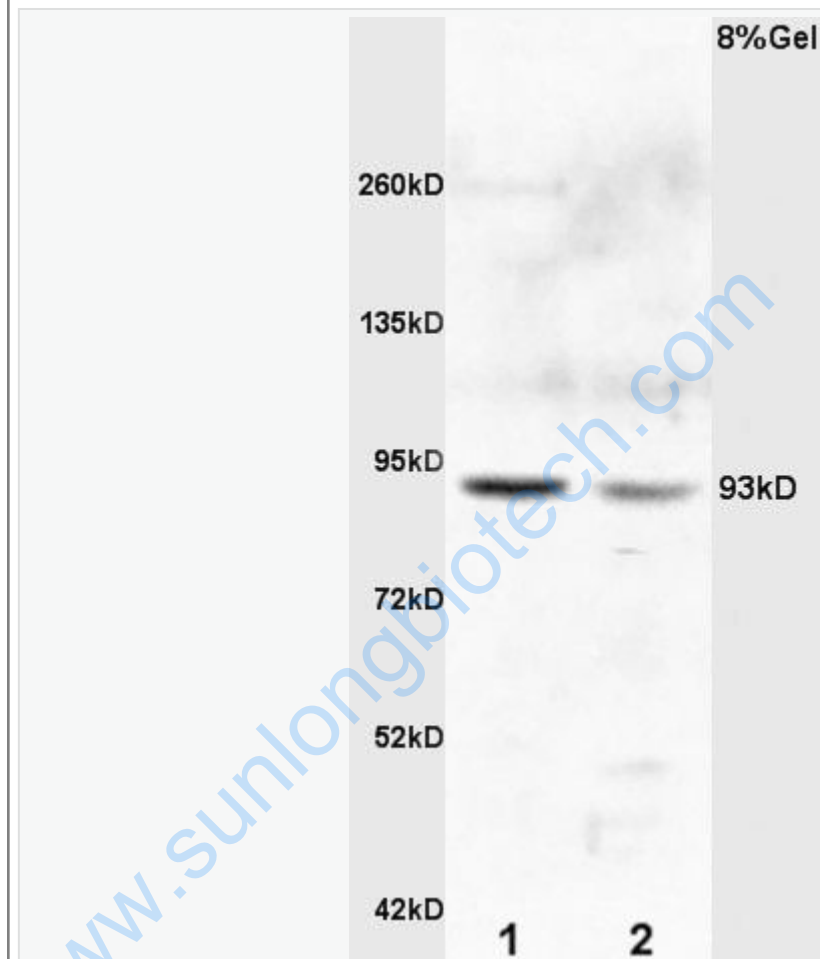
Product Name:	E2F8
Chinese Name:	转录因子E2F8抗体
Alias:	E2F 8; E2F family member 82; E2F transcription factor 8; E2F-8; E2f8; E2F8_HUMAN; FLJ23311; Transcription factor E2F8.
文献引用 PubMed :	<p>Specific References(1) SL4265R has been referenced in 1 publications.</p> <p>[IF=4.20]Yuan, Qing, et al. "Docetaxel-loaded solid lipid nanoparticles suppress breast cancer cells growth with reduced myelosuppression toxicity." International Journal of Nanomedicine 9 (2014): 4829.WB;Mouse.</p> <p style="text-align: right;">PubMed:25378924</p>
Organism Species:	Rabbit
Clonality:	Polyclonal
React Species:	Human,Mouse,Rat,Chicken,Pig,Horse,Rabbit,
Applications:	WB=1:500-2000ELISA=1:500-1000IHC-P=1:400-800IHC-F=1:400-800IF=1:100-500 (Paraffin sections need antigen repair) not yet tested in other applications. optimal dilutions/concentrations should be determined by the end user.
Molecular weight:	94kDa
Cellular localization:	The nucleus
Form:	Lyophilized or Liquid
Concentration:	1mg/ml
immunogen:	KLH conjugated synthetic peptide derived from human E2F8:265-360/968
Lsotype:	IgG
Purification:	affinity purified by Protein A
Storage Buffer:	0.01M TBS(pH7.4) with 1% BSA, 0.03% Proclin300 and 50% Glycerol.
Storage:	Store at -20 °C for one year. Avoid repeated freeze/thaw cycles. The lyophilized antibody is stable at room temperature for at least one month and for greater than a year when kept at -20°C. When reconstituted in sterile pH 7.4 0.01M PBS or diluent of

	antibody the antibody is stable for at least two weeks at 2-4 °C.
PubMed:	PubMed
Product Detail:	<p>This gene encodes a member of a family of transcription factors which regulate the expression of genes required for progression through the cell cycle. The encoded protein regulates progression from G1 to S phase by ensuring the nucleus divides at the proper time. Multiple alternatively spliced variants, encoding the same protein, have been identified. [provided by RefSeq, Jan 2012].</p> <p>Function: Along with E2F7, inhibitor of E2F-dependent transcription. Binds DNA independently of DP proteins through the E2 recognition site, 5'-TTTC[CG]CGC-3'. Directly represses E2F1 transcription. Appears to regulate a subset of E2F-dependent genes whose products are required for normal cell cycle progression.</p> <p>Subunit: Forms heterodimers with E2F7 and, to a lesser extent, homodimers. Dimerization is important for DNA binding.</p> <p>Subcellular Location: Nucleus.</p> <p>Similarity: Belongs to the E2F/DP family</p> <p>SWISS: A0AVK6</p> <p>Gene ID: 79733</p> <p>Database links: Entrez Gene: 79733Human Entrez Gene: 108961Mouse Entrez Gene: 308607Rat Omin: 612047Human SwissProt: A0AVK6Human SwissProt: Q58FA4Mouse Unigene: 523526Human Unigene: 240566Mouse Unigene: 395068Mouse</p>

Important Note:

This product as supplied is intended for research use only, not for use in human, therapeutic or diagnostic applications.

Picture:



Sample:

Kidney (Rat) Lysate at 40 ug

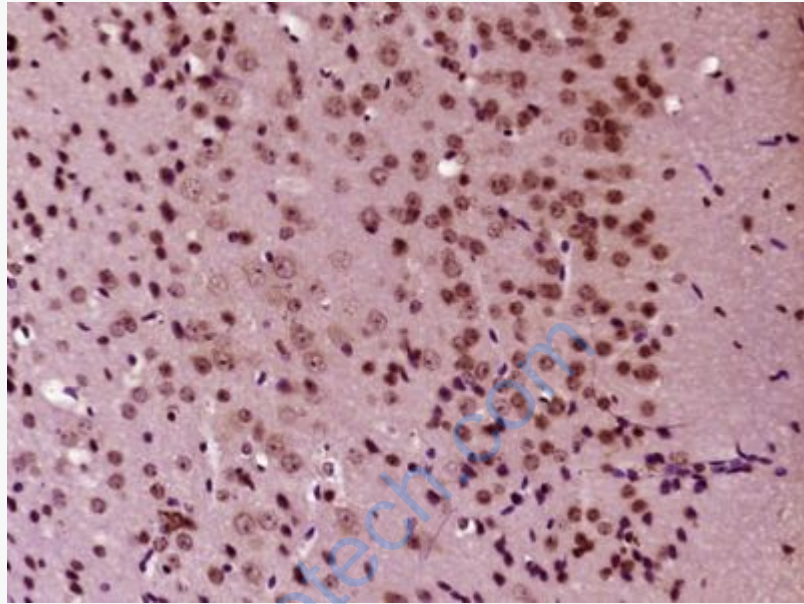
Brain (Rat) Lysate at 40 ug

Primary: Anti-E2F8 (SL4265R) at 1/300 dilution

Secondary: HRP conjugated Goat-Anti-rabbit IgG (SL4265R) at 1/5000 dilution

Predicted band size: 94 kD

Observed band size: 93 kD



Paraformaldehyde-fixed, paraffin embedded (Mouse brain); Antigen retrieval by boiling in sodium citrate buffer (pH6.0) for 15min; Block endogenous peroxidase by 3% hydrogen peroxide for 20 minutes; Blocking buffer (normal goat serum) at 37°C for 30min; Antibody incubation with (E2F8) Polyclonal Antibody, Unconjugated (SL4265R) at 1:400 overnight at 4°C, followed by operating according to SP Kit(Rabbit) (sp-0023) instructions and DAB staining.