



Rabbit Anti-DBC2 antibody

SL4274R

Product Name:	DBC2
Chinese Name:	乳腺癌基因删除蛋白2抗体
Alias:	DBC 2; Deleted in breast cancer 2; Deleted in breast cancer 2 gene protein; E130206H14Rik; KIAA0717; p83; RBT2; RHBT2_HUMAN; Rho related BTB domain containing 2; Rho related BTB domain containing protein 2; Rho-related BTB domain containing 2; Rho-related BTB domain-containing protein 2; RHOBTB 2; Rhobtb2.
Organism Species:	Rabbit
Clonality:	Polyclonal
React Species:	Human,Mouse,Rat,Pig,Cow,Horse,
Applications:	WB=1:500-2000ELISA=1:500-1000IHC-P=1:400-800IHC-F=1:400-800IF=1:100-500 (Paraffin sections need antigen repair) not yet tested in other applications. optimal dilutions/concentrations should be determined by the end user.
Molecular weight:	83kDa
Cellular localization:	cytoplasmicThe cell membrane
Form:	Lyophilized or Liquid
Concentration:	1mg/ml
immunogen:	KLH conjugated synthetic peptide derived from human DBC2:631-727/727
Lsotype:	IgG
Purification:	affinity purified by Protein A
Storage Buffer:	0.01M TBS(pH7.4) with 1% BSA, 0.03% Proclin300 and 50% Glycerol.
Storage:	Store at -20 °C for one year. Avoid repeated freeze/thaw cycles. The lyophilized antibody is stable at room temperature for at least one month and for greater than a year when kept at -20°C. When reconstituted in sterile pH 7.4 0.01M PBS or diluent of antibody the antibody is stable for at least two weeks at 2-4 °C.
PubMed:	PubMed
Product Detail:	DBC2 is a member of the recently identified RhoBTB family, which is part of the Rho GTPase family. DBC2 has been implicated as a tumor suppressor in breast and lung cancer. Studies have shown that DBC2 binds to the ubiquitin ligase scaffold Cul3, and that Cul3 regulates DBC2 protein levels by ubiquitinating DBC2 directly, leading to its

degradation by the proteasome.

Tissue Specificity:

Ubiquitous, with highest levels in neural tissues. Expression is also detected in fetal lung, heart, and brain.

Similarity:

Belongs to the small GTPase superfamily. Rho family.
Contains 2 BTB (POZ) domains.

SWISS:

Q9BYZ6

Gene ID:

23221

Database links:

[Entrez Gene: 23221](#)Human

[Entrez Gene: 246710](#)Mouse

[Omim: 607352](#)Human

[SwissProt: Q9BYZ6](#)Human

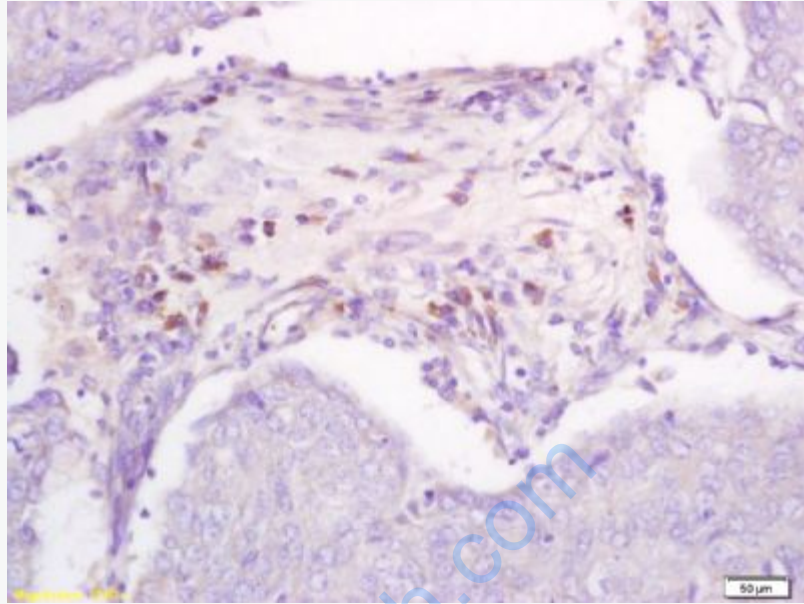
[SwissProt: Q91V93](#)Mouse

[Unigene: 372688](#)Human

[Unigene: 102367](#)Mouse

Important Note:

This product as supplied is intended for research use only, not for use in human, therapeutic or diagnostic applications.



Picture:

Tissue/cell: human breast carcinoma; 4% Paraformaldehyde-fixed and paraffin-embedded;

Antigen retrieval: citrate buffer (0.01M, pH 6.0), Boiling bathing for 15min; Block endogenous peroxidase by 3% Hydrogen peroxide for 30min; Blocking buffer (normal goat serum,C-0005) at 37°C for 20 min;

Incubation: Anti-DBC2 Polyclonal Antibody, Unconjugated(SL4274R) 1:200, overnight at 4°C, followed by conjugation to the secondary antibody(SP-0023) and DAB(C-0010) staining