



Rabbit Anti-EBF3 antibody

SL4275R

| | |
|-------------------------------|--|
| Product Name: | EBF3 |
| Chinese Name: | 微管相关蛋白EB家族3抗体 |
| Alias: | APC binding protein; EB 3; EB1 protein family member 3; EB3; EBF 3; EBF3; EBF3 S; End binding protein 3; End-binding protein 3; MAPRE 3; MAPRE3; MARE3_HUMAN; Member 3; Microtubule Associated Protein; Microtubule associated protein RP/EB family member 3; Microtubule-associated protein RP/EB family member 3; OTTHUMP00000200910; RP 3; RP/EB Family; RP3. |
| Organism Species: | Rabbit |
| Clonality: | Polyclonal |
| React Species: | Human,Mouse,Rat,Chicken,Dog,Pig,Cow,Rabbit, |
| Applications: | WB=1:500-2000ELISA=1:500-1000IHC-P=1:400-800IHC-F=1:400-800IF=1:100-500 (Paraffin sections need antigen repair) not yet tested in other applications. optimal dilutions/concentrations should be determined by the end user. |
| Molecular weight: | 25kDa |
| Cellular localization: | cytoplasmic |
| Form: | Lyophilized or Liquid |
| Concentration: | 1mg/ml |
| immunogen: | KLH conjugated synthetic peptide derived from human EB3:75-185/281 |
| Lsotype: | IgG |
| Purification: | affinity purified by Protein A |
| Storage Buffer: | 0.01M TBS(pH7.4) with 1% BSA, 0.03% Proclin300 and 50% Glycerol. |
| Storage: | Store at -20 °C for one year. Avoid repeated freeze/thaw cycles. The lyophilized antibody is stable at room temperature for at least one month and for greater than a year when kept at -20°C. When reconstituted in sterile pH 7.4 0.01M PBS or diluent of antibody the antibody is stable for at least two weeks at 2-4 °C. |
| PubMed: | PubMed |
| Product Detail: | May be involved in microtubule polymerization, and spindle function by stabilizing microtubules and anchoring them at centrosomes. May play a role in cell migration. |

Function:

Binds to the plus end of microtubules and regulates the dynamics of the microtubule cytoskeleton. Promotes microtubule growth. May be involved in spindle function by stabilizing microtubules and anchoring them at centrosomes. May play a role in cell migration (By similarity).

Subunit:

Interacts with APC2 (By similarity). Interacts with DCTN1 and SRCIN1. Binds to the C-terminal domain of APC. Binds monomeric and polymerized tubulin.

Subcellular Location:

Cytoplasm, cytoskeleton.

Tissue Specificity:

Predominantly expressed in brain and muscle.

Similarity:

Belongs to the MAPRE family.

Contains 1 CH (calponin-homology) domain.

Contains 1 EB1 C-terminal domain.

SWISS:

Q9H4W6

Gene ID:

253738

Database links:

[Entrez Gene: 253738](#) Human

[Entrez Gene: 13593](#) Mouse

[Omim: 607407](#) Human

[SwissProt: Q9H4W6](#) Human

[SwissProt: O08791](#) Mouse

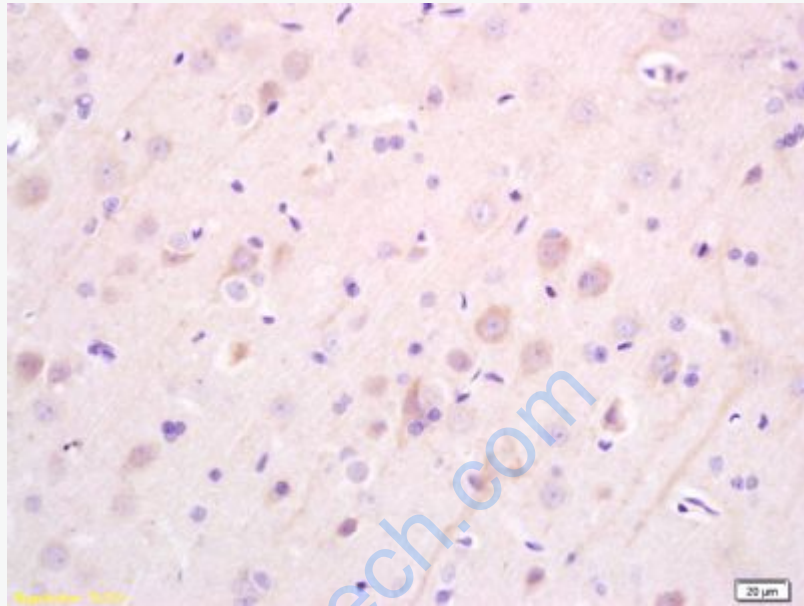
[Unigene: 591374](#) Human

[Unigene: 258708](#) Mouse

Important Note:

This product as supplied is intended for research use only, not for use in human,

therapeutic or diagnostic applications.



Picture:

Tissue/cell: rat brain tissue; 4% Paraformaldehyde-fixed and paraffin-embedded;
Antigen retrieval: citrate buffer (0.01M, pH 6.0), Boiling bathing for 15min; Block
endogenous peroxidase by 3% Hydrogen peroxide for 30min; Blocking buffer
(normal goat serum,C-0005) at 37°C for 20 min;
Incubation: Anti-EB3 Polyclonal Antibody, Unconjugated(SL4275R) 1:200,
overnight at 4°C, followed by conjugation to the secondary antibody(SP-0023) and
DAB(C-0010) staining