



Rabbit Anti-ELAC2/HPC2 antibody

SL4276R

Product Name:	ELAC2/HPC2
Chinese Name:	遗传性前列腺癌蛋白2抗体
Alias:	elaC homolog 2; ElaC homolog protein 2; ELC2; Heredity prostate cancer protein 2; HPC2; putative prostate cancer susceptibility protein HPC2/ELAC2; Ribonuclease Z2; RNase Z2; tRNA 3 endonuclease 2; tRNase Z (long form); tRNase Z2; Zinc phosphodiesterase ELAC protein 2; RNZ2_HUMAN; Ribonuclease Z 2; RNase Z 2.
Organism Species:	Rabbit
Clonality:	Polyclonal
React Species:	Human,Mouse,Rat,Dog,Rabbit,
Applications:	ELISA=1:500-1000IHC-P=1:400-800IHC-F=1:400-800IF=1:100-500 (Paraffin sections need antigen repair) not yet tested in other applications. optimal dilutions/concentrations should be determined by the end user.
Molecular weight:	92kDa
Cellular localization:	The nucleuscytoplasmic
Form:	Lyophilized or Liquid
Concentration:	1mg/ml
immunogen:	KLH conjugated synthetic peptide derived from human ELAC2:88-190/826
Lsotype:	IgG
Purification:	affinity purified by Protein A
Storage Buffer:	0.01M TBS(pH7.4) with 1% BSA, 0.03% Proclin300 and 50% Glycerol.
Storage:	Store at -20 °C for one year. Avoid repeated freeze/thaw cycles. The lyophilized antibody is stable at room temperature for at least one month and for greater than a year when kept at -20°C. When reconstituted in sterile pH 7.4 0.01M PBS or diluent of antibody the antibody is stable for at least two weeks at 2-4 °C.
PubMed:	PubMed
Product Detail:	ELAC2 is a zinc phosphodiesterase which displays some tRNA 3' processing endonuclease activity. It is thought to be involved in tRNA maturation, acting by removing a 3' trailer from precursor tRNA. ELAC2 also interacts with activated Smad family member 2 (Smad2) and its nuclear partner forkhead box H1 (also known as

FAST-1), and reduced expression can suppress transforming growth factor-beta induced growth arrest. Mutations in this gene result in an increased risk of prostate cancer. A number of allelic variants have been investigated in hereditary prostate cancer.

Function:

Zinc phosphodiesterase, which displays mitochondrial tRNA 3'-processing endonuclease activity. Involved in tRNA maturation, by removing a 3'-trailer from precursor tRNA.

Subunit:

Homodimer. Interacts with PTCD1.

Subcellular Location:

Mitochondrion. Nucleus. Note=Mainly mitochondrial.

Tissue Specificity:

Widely expressed. Highly expressed in heart, placenta, liver, skeletal muscle, kidney, pancreas, testis and ovary. Weakly expressed in brain, lung, spleen, thymus, prostate, small intestine, colon and leukocytes.

Similarity:

Belongs to the RNase Z family.

SWISS:

Q9BQ52

Gene ID:

60528

Database links:

[Entrez Gene: 60528](#)Human

[Entrez Gene: 68626](#)Mouse

[Entrez Gene: 282826](#)Rat

[Omim: 605367](#)Human

[SwissProt: Q9BQ52](#)Human

[SwissProt: Q80Y81](#)Mouse

[SwissProt: Q8CGS5](#)Rat

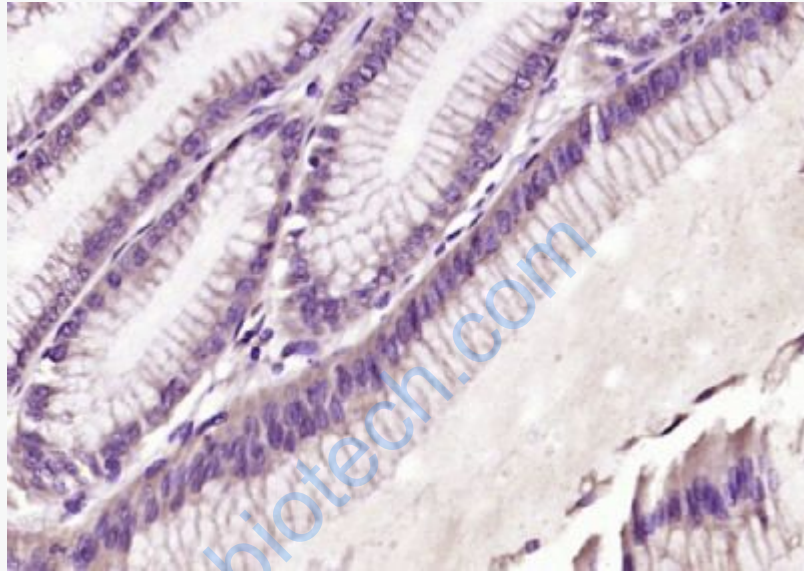
[Unigene: 434232](#)Human

[Unigene: 157711](#)Mouse

[Unigene: 163124](#)Rat

Important Note:

This product as supplied is intended for research use only, not for use in human, therapeutic or diagnostic applications.



Picture:

Paraformaldehyde-fixed, paraffin embedded (human gastric carcinoma); Antigen retrieval by boiling in sodium citrate buffer (pH6.0) for 15min; Block endogenous peroxidase by 3% hydrogen peroxide for 20 minutes; Blocking buffer (normal goat serum) at 37°C for 30min; Antibody incubation with (ELAC2) Polyclonal Antibody, Unconjugated (SL4276R) at 1:200 overnight at 4°C, followed by operating according to SP Kit(Rabbit) (sp-0023) instructions and DAB staining.