



## Rabbit Anti-TPX2 antibody

SL4285R

<b>Product Name:</b>	TPX2
<b>Chinese Name:</b>	微管相关同源蛋白TPX2抗体
<b>Alias:</b>	C20ORF1; C20orf2; Chromosome 20 Open Reading Frame 1; Differentially expressed in cancerous and non-cancerous lung cells 2; Differentially expressed in cancerous and noncancerous lung cells 2; Differentially expressed in lung cells 2; Differentially expressed in lung cells; DIL 2; DIL-2; DIL2; FLS353; GD:C20orf1; HCA 519; HCA519; HCTP 4; HCTP4; Hepatocellular carcinoma associated antigen 519; Hepatocellular carcinoma-associated antigen 519; p100; Preferentially expressed in colorectal cancer; Protein FLS353; REPP 86; repp86; Restricted expression proliferation associated protein 100; Restricted expression proliferation-associated protein 100; Targeting protein for XKLP2; TPX 2; TPX2; TPX2 microtubule associated homolog; TPX2 microtubule associated protein homolog; TPX2 HUMAN.
<b>Organism Species:</b>	Rabbit
<b>Clonality:</b>	Polyclonal
<b>React Species:</b>	Human, Mouse, Rat, Dog, Pig, Cow, Horse, Rabbit,
<b>Applications:</b>	WB=1:500-2000ELISA=1:500-1000IHC-P=1:400-800IHC-F=1:400-800IF=1:100-500 (Paraffin sections need antigen repair) not yet tested in other applications. optimal dilutions/concentrations should be determined by the end user.
<b>Molecular weight:</b>	86kDa
<b>Cellular localization:</b>	The nucleuscytoplasmic
<b>Form:</b>	Lyophilized or Liquid
<b>Concentration:</b>	1mg/ml
<b>immunogen:</b>	KLH conjugated synthetic peptide derived from human TPX2:551-650/747
<b>Lsotype:</b>	IgG
<b>Purification:</b>	affinity purified by Protein A
<b>Storage Buffer:</b>	0.01M TBS(pH7.4) with 1% BSA, 0.03% Proclin300 and 50% Glycerol.
<b>Storage:</b>	Store at -20 °C for one year. Avoid repeated freeze/thaw cycles. The lyophilized antibody is stable at room temperature for at least one month and for greater than a year when kept at -20°C. When reconstituted in sterile pH 7.4 0.01M PBS or diluent of

	antibody the antibody is stable for at least two weeks at 2-4 °C.
<b>PubMed:</b>	<a href="#">PubMed</a>
<b>Product Detail:</b>	<p>TPX2 is essential for spindle pole and mitotic spindle formulation, playing a role in the S and G2 phases of mitosis. It is also critical for the function of protein kinase Aurora A. TPX2 autophosphorylates Aurora A, targeting it to the spindle apparatus and allowing it to function in eukaryotic meiotic and mitotic cell cycles. TPX2 has also been found to be highly expressed in cancer cells.</p> <p><b>Function:</b> Spindle assembly factor. Required for normal assembly of mitotic spindles. Required for normal assembly of microtubules during apoptosis. Required for chromatin and/or kinetochore dependent microtubule nucleation. Mediates AURKA localization to spindle microtubules. Activates AURKA by promoting its autophosphorylation at 'Thr-288' and protects this residue against dephosphorylation.</p> <p><b>Subunit:</b> Interacts with AURKA.</p> <p><b>Subcellular Location:</b> Nucleus. Cytoplasm, cytoskeleton, spindle. Cytoplasm, cytoskeleton, spindle pole. Note=During mitosis it is strictly associated with the spindle pole and with the mitotic spindle, whereas during S and G2, it is diffusely distributed throughout the nucleus. Is released from the nucleus in apoptotic cells and is detected on apoptotic microtubules.</p> <p><b>Tissue Specificity:</b> Expressed in lung carcinoma cell lines but not in normal lung tissues.</p> <p><b>Similarity:</b> Belongs to the TPX2 family.</p> <p><b>SWISS:</b> Q9ULW0</p> <p><b>Gene ID:</b> 22974</p> <p><b>Database links:</b> <a href="#">Entrez Gene: 22974</a>Human <a href="#">Entrez Gene: 72119</a>Mouse <a href="#">Entrez Gene: 311546</a>Rat <a href="#">Omim: 605917</a>Human <a href="#">SwissProt: Q9ULW0</a>Human</p>

[SwissProt: A2APB8](#)Mouse

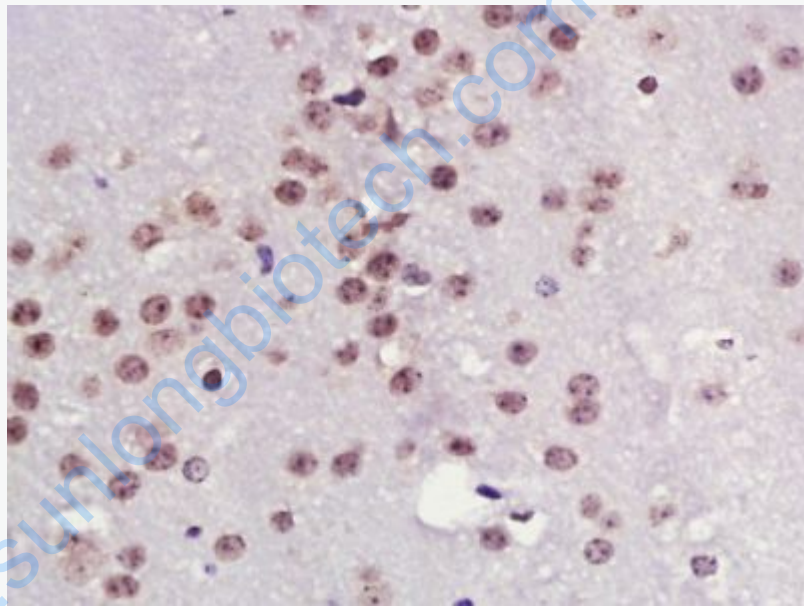
[Unigene: 244580](#)Human

[Unigene: 407737](#)Mouse

[Unigene: 161631](#)Rat

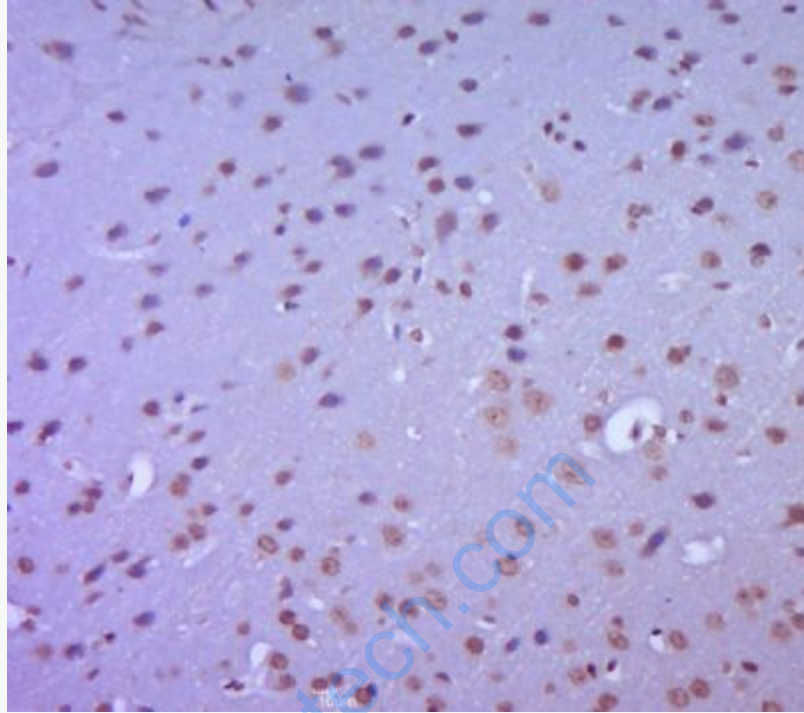
**Important Note:**

This product as supplied is intended for research use only, not for use in human, therapeutic or diagnostic applications.



**Picture:**

Paraformaldehyde-fixed, paraffin embedded (Mouse brain); Antigen retrieval by boiling in sodium citrate buffer (pH6.0) for 15min; Block endogenous peroxidase by 3% hydrogen peroxide for 20 minutes; Blocking buffer (normal goat serum) at 37°C for 30min; Antibody incubation with (TPX2) Polyclonal Antibody, Unconjugated (SL4285R) at 1:400 overnight at 4°C, followed by a conjugated secondary antibody (sp-0023) for 20 minutes and DAB staining.



Paraformaldehyde-fixed, paraffin embedded (mouse brain tissue); Antigen retrieval by boiling in sodium citrate buffer (pH6.0) for 15min; Block endogenous peroxidase by 3% hydrogen peroxide for 20 minutes; Blocking buffer (normal goat serum) at 37°C for 30min; Antibody incubation with (TPX2) Polyclonal Antibody, Unconjugated (SL4285R) at 1:400 overnight at 4°C, followed by a conjugated secondary (sp-0023) for 20 minutes and DAB staining.