

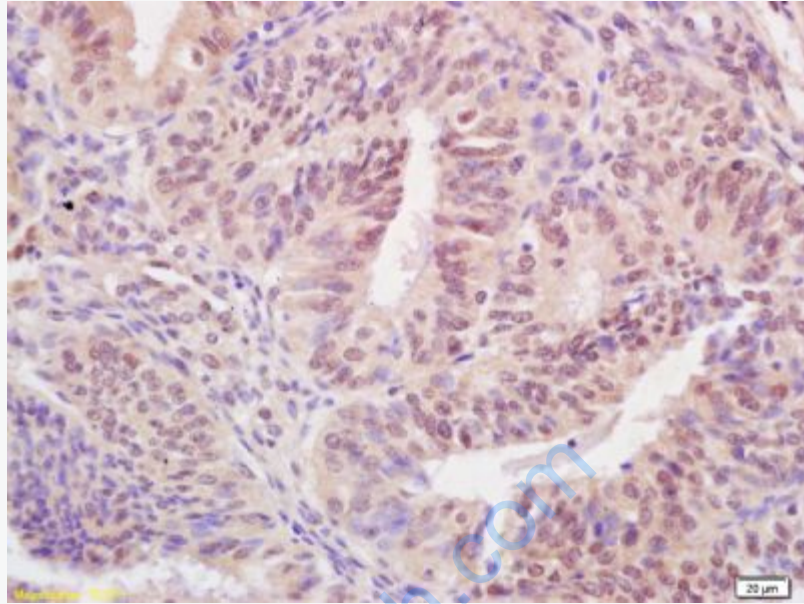


Rabbit Anti-BARD1 antibody

SL4291R

Product Name:	BARD1
Chinese Name:	乳腺癌易感基因环状结构域蛋白抗体
Alias:	BARD-1; Bard1; Bard 1; BARD1_HUMAN; BRCA1 associated RING domain 1; BRCA1 associated RING domain gene 1; BRCA1 associated RING domain protein 1; BRCA1-associated RING domain protein 1.
文献引用 PubMed :	Specific References(1) SL4291R has been referenced in 1 publications. [IF=5.07] Liu, Ying, et al. "FOXK2 Transcription Factor Suppresses ER α -positive Breast Cancer Cell Growth Through Down-Regulating the Stability of ER α via mechanism involving BRCA1/BARD1." Scientific Reports 5 (2015). IP;Human. PubMed:25740706
Organism Species:	Rabbit
Clonality:	Polyclonal
React Species:	Human,Mouse,Rat,Chicken,Dog,Pig,Cow,Horse,
Applications:	WB=1:500-2000ELISA=1:500-1000IHC-P=1:400-800IHC-F=1:400-800Flow-Cyt=1ug/TestIF=1:100-500 (Paraffin sections need antigen repair) not yet tested in other applications. optimal dilutions/concentrations should be determined by the end user.
Molecular weight:	85kDa
Cellular localization:	The nucleus
Form:	Lyophilized or Liquid
Concentration:	1mg/ml
immunogen:	KLH conjugated synthetic peptide derived from human BARD1:101-200/777
Lsotype:	IgG
Purification:	affinity purified by Protein A
Storage Buffer:	0.01M TBS(pH7.4) with 1% BSA, 0.03% Proclin300 and 50% Glycerol.
Storage:	Store at -20 °C for one year. Avoid repeated freeze/thaw cycles. The lyophilized antibody is stable at room temperature for at least one month and for greater than a year

	when kept at -20°C. When reconstituted in sterile pH 7.4 0.01M PBS or diluent of antibody the antibody is stable for at least two weeks at 2-4 °C.
PubMed:	PubMed
Product Detail:	<p>BRCA1 Associated RING Domain gene 1 (BARD1) interacts with the N terminal region of BRCA1. In addition to its ability to bind BRCA1 in vivo and in vitro, BARD1 shares homology with the 2 most conserved regions of BRCA1: the N terminal RING motif and the C terminal BRCT domain. The RING motif is a cysteine rich sequence found in a variety of proteins that regulate cell growth, including the products of tumor suppressor genes and dominant protooncogenes. The BARD1 protein also contains 3 tandem ankyrin repeats. The BARD1/BRCA1 interaction is disrupted by tumorigenic amino acid substitutions in BRCA1, implying that the formation of a stable complex between these proteins may be an essential aspect of BRCA1 tumor suppression. BARD1 may be the target of oncogenic mutations in breast or ovarian cancer. BARD1 also plays a role in mediating apoptotic stress and p53 dependent.</p> <p>Subunit: Homo- and heterodimer. Heterodimer</p> <p>Subcellular Location: Nucleus.</p> <p>Similarity: Contains 4 ANK repeats. Contains 2 BRCT domains. Contains 1 RING-type zinc finger.</p> <p>SWISS: Q99728</p> <p>Gene ID: 580</p> <p>Database links: Entrez Gene: 580Human Omim: 601593Human SwissProt: Q99728Human Unigene: 591642Human</p> <p>Important Note: This product as supplied is intended for research use only, not for use in human, therapeutic or diagnostic applications.</p>

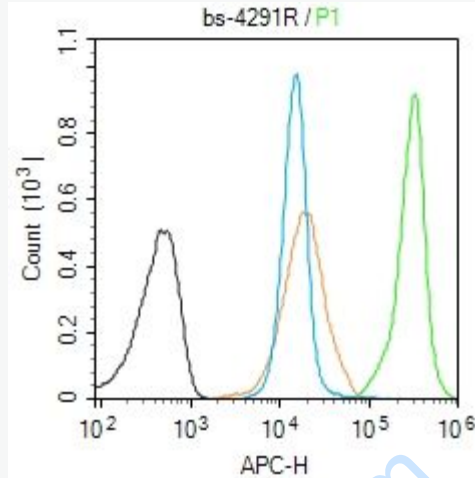


Picture:

Tissue/cell: human breast carcinoma; 4% Paraformaldehyde-fixed and paraffin-embedded;

Antigen retrieval: citrate buffer (0.01M, pH 6.0), Boiling bathing for 15min; Block endogenous peroxidase by 3% Hydrogen peroxide for 30min; Blocking buffer (normal goat serum,C-0005) at 37°C for 20 min;

Incubation: Anti-BARD1 Polyclonal Antibody, Unconjugated(SL4291R) 1:200, overnight at 4°C, followed by conjugation to the secondary antibody(SP-0023) and DAB(C-0010) staining



Blank control (Black line): Molt4 (Black).

Primary Antibody (green line): Rabbit Anti-BARD1 antibody (SL4291R)

Dilution: 1 μ g /10⁶ cells;

Isotype Control Antibody (orange line): Rabbit IgG .

Secondary Antibody (white blue line): Goat anti-rabbit IgG-AF647

Dilution: 1 μ g /test.

Protocol

The cells were fixed with 4% PFA (10min at room temperature) and then permeabilized with 90% ice-cold methanol for 20 min at room temperature. The cells were then incubated in 5% BSA to block non-specific protein-protein interactions for 30 min at room temperature. Cells stained with Primary Antibody for 30 min at room temperature. The secondary antibody used for 40 min at room temperature. Acquisition of 20,000 events was performed.