



Rabbit Anti-VE Cadherin antibody

SL4310R

Product Name:	VE Cadherin
Chinese Name:	血管内皮钙粘蛋白抗体
Alias:	VE-cadherin; 7B4 antigen; VECD; Vascular endothelial cell cadherin; 7B 4; 7B4; 7B4 antigen; Cadherin 5; Cadherin 5 type 2; Cadherin-5; Cadherin5; CD 144; CD144; CD144 antigen; CDH 5; CDH5; CDH5 protein; Vascular endothelial cadherin; VE Cad antibody VEC; CADH5_HUMAN.
Organism Species:	Rabbit
Clonality:	Polyclonal
React Species:	Human,Mouse,Rat,Pig,Cow,Horse,
Applications:	Flow-Cyt=1µg/Test not yet tested in other applications. optimal dilutions/concentrations should be determined by the end user.
Molecular weight:	81kDa
Cellular localization:	The cell membrane
Form:	Lyophilized or Liquid
Concentration:	1mg/ml
immunogen:	KLH conjugated synthetic peptide derived from human VE Cadherin:251-320/784<Extracellular>
Lsotype:	IgG
Purification:	affinity purified by Protein A
Storage Buffer:	0.01M TBS(pH7.4) with 1% BSA, 0.03% Proclin300 and 50% Glycerol.
Storage:	Store at -20 °C for one year. Avoid repeated freeze/thaw cycles. The lyophilized antibody is stable at room temperature for at least one month and for greater than a year when kept at -20°C. When reconstituted in sterile pH 7.4 0.01M PBS or diluent of antibody the antibody is stable for at least two weeks at 2-4 °C.
PubMed:	PubMed
Product Detail:	This gene is a classical cadherin from the cadherin superfamily and is located in a six-cadherin cluster in a region on the long arm of chromosome 16 that is involved in loss of heterozygosity events in breast and prostate cancer. The encoded protein is a calcium-dependent cell-cell adhesion glycoprotein comprised of five extracellular cadherin

repeats, a transmembrane region and a highly conserved cytoplasmic tail. Functioning as a classic cadherin by imparting to cells the ability to adhere in a homophilic manner, the protein may play an important role in endothelial cell biology through control of the cohesion and organization of the intercellular junctions. An alternative splice variant has been described but its full length sequence has not been determined. [provided by RefSeq, Jul 2008].

Function:

Cadherins are calcium dependent cell adhesion proteins. They preferentially interact with themselves in a homophilic manner in connecting cells; cadherins may thus contribute to the sorting of heterogeneous cell types. This cadherin may play an important role in endothelial cell biology through control of the cohesion and organization of the intercellular junctions. It associates with alpha-catenin forming a link to the cytoskeleton.

Subunit:

Interacts via cadherin 5 domain with PTPRB. Interacts with TRPC4. Interacts with KRIT1.

Subcellular Location:

Cell junction. Cell membrane. Found at cell-cell boundaries and probably at cell-matrix boundaries.

Tissue Specificity:

Endothelial tissues and brain.

Post-translational modifications:

Phosphorylated on tyrosine residues by KDR/VEGFR-2. Dephosphorylated by PTPRB.

Similarity:

Contains 5 cadherin domains.

SWISS:

P33151

Gene ID:

1003

Database links:

[Entrez Gene: 1003](#)Human

[Entrez Gene: 12562](#)Mouse

[Entrez Gene: 307618](#)Rat

[Omim: 601120](#)Human

[SwissProt: P33151](#)Human

[SwissProt: P55284](#)Mouse

[Unigene: 76206](#)Human

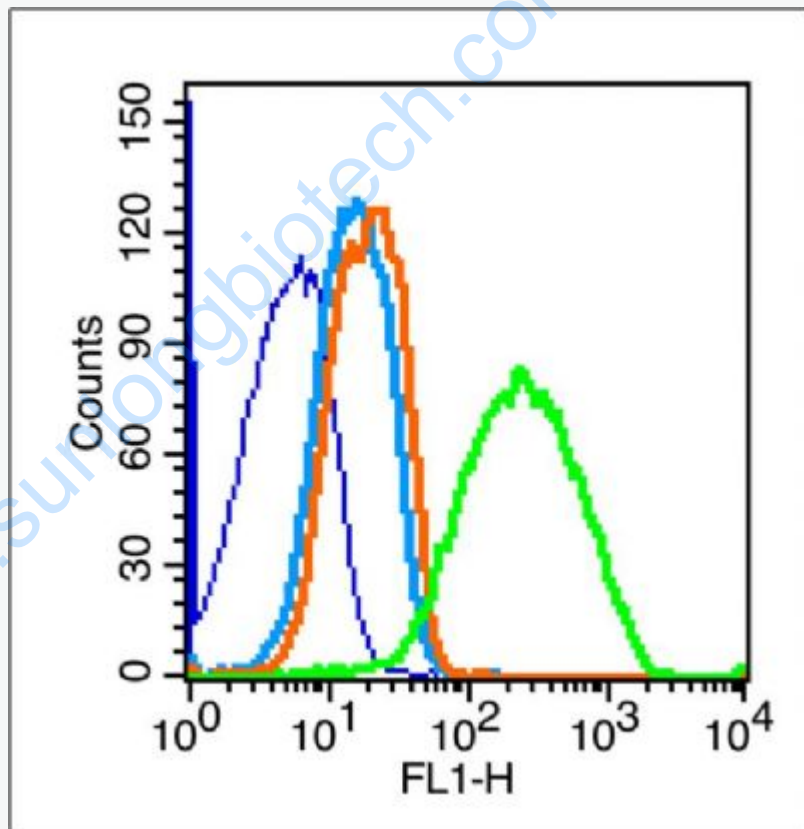
[Unigene: 21767](#)Mouse

[Unigene: 224644](#)Rat

Important Note:

This product as supplied is intended for research use only, not for use in human, therapeutic or diagnostic applications.

Picture:



Blank control (blue line): Mouse kidney (blue).

Primary Antibody (green line): Rabbit Anti-VE Cadherin antibody (SL4310R)

Dilution: 1 μ g /10⁶ cells;

Isotype Control Antibody (orange line): Rabbit IgG .

Secondary Antibody (white blue line): F(ab')₂ fragment goat anti-rabbit IgG-FITC

Dilution: 1 μg /test.

Protocol

The cells were fixed with 70% ice-cold methanol overnight at 4°C. Cells stained with Primary Antibody for 30 min at room temperature. The cells were then incubated in 1 X PBS/2%BSA/10% goat serum to block non-specific protein-protein interactions followed by the antibody for 15 min at room temperature. The secondary antibody used for 40 min at room temperature. Acquisition of 20,000 events was performed.