



## Rabbit Anti-ZNF638 antibody

SL4331R

<b>Product Name:</b>	ZNF638
<b>Chinese Name:</b>	Zinc finger protein638抗体
<b>Alias:</b>	CTCL tumor antigen se33 1; CTCL-associated antigen se33-1; Cutaneous T cell lymphoma associated antigen se33 1; Cutaneous T-cell lymphoma-associated antigen se33-1; DKFZp686P1231; MGC26130; MGC90196; NP220; NP220 nuclear protein; Nuclear protein 220; ZFML; Zfp638; Zinc finger matrin like; Zinc finger matrin like protein; Zinc finger matrin-like protein; Zinc finger protein 638; ZN638_HUMAN; ZNF638; Znf638.
<b>Organism Species:</b>	Rabbit
<b>Clonality:</b>	Polyclonal
<b>React Species:</b>	Human,Mouse,Rat,Dog,Pig,Cow,Rabbit,Sheep,
<b>Applications:</b>	WB=1:500-2000ELISA=1:500-1000IHC-P=1:400-800IHC-F=1:400-800ICC=1:100-500IF=1:100-500 (Paraffin sections need antigen repair) not yet tested in other applications. optimal dilutions/concentrations should be determined by the end user.
<b>Molecular weight:</b>	221kDa
<b>Cellular localization:</b>	The nucleus
<b>Form:</b>	Lyophilized or Liquid
<b>Concentration:</b>	1mg/ml
<b>immunogen:</b>	KLH conjugated synthetic peptide derived from human ZNF638:1891-1978/1978
<b>Lsotype:</b>	IgG
<b>Purification:</b>	affinity purified by Protein A
<b>Storage Buffer:</b>	Preservative: 15mM Sodium Azide, Constituents: 1% BSA, 0.01M PBS, pH 7.4
<b>Storage:</b>	Store at -20 °C for one year. Avoid repeated freeze/thaw cycles. The lyophilized antibody is stable at room temperature for at least one month and for greater than a year when kept at -20°C. When reconstituted in sterile pH 7.4 0.01M PBS or diluent of antibody the antibody is stable for at least two weeks at 2-4 °C.
<b>PubMed:</b>	<a href="#">PubMed</a>
<b>Product Detail:</b>	The protein encoded by this gene is a nucleoplasmic protein. It binds cytidine-rich sequences in double-stranded DNA. This protein has three types of domains: MH1,

MH2 (repeated three times) and MH3. It is associated with packaging, transferring, or processing transcripts. Multiple alternatively spliced transcript variants have been found for this gene, but the biological validity of some variants has not been determined. [provided by RefSeq, Jul 2008]

**Function:**

Early regulator of adipogenesis that works as a transcription cofactor of CEBPs, controlling the expression of PPARG and probably of other proadipogenic genes, such as SREBF1 (By similarity). Binds to cytidine clusters in double-stranded DNA.

**Subcellular Location:**

Nucleus speckle.

**Similarity:**

Contains 1 matrin-type zinc finger.

Contains 2 RRM (RNA recognition motif) domains.

**SWISS:**

Q14966

**Gene ID:**

27332

**Database links:**

[Entrez Gene: 27332](#) Human

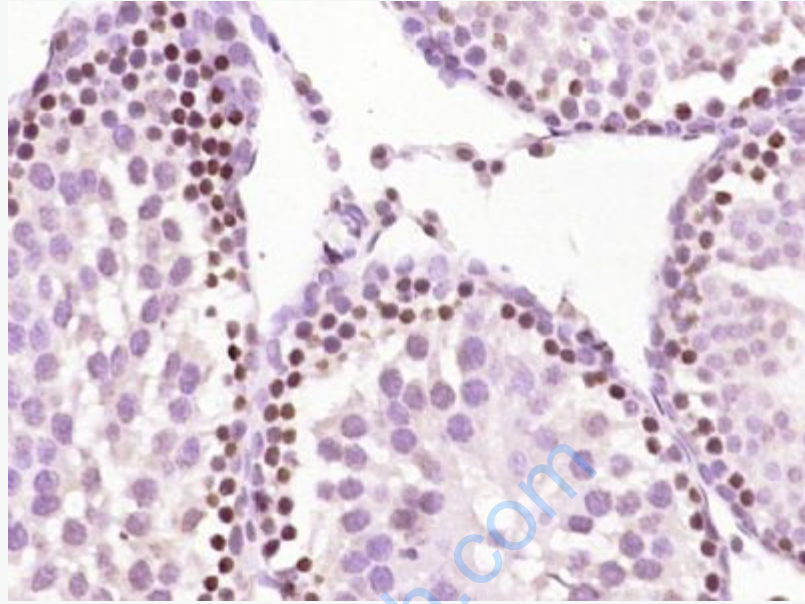
[SwissProt: Q14966](#) Human

[Unigene: 434401](#) Human

[Unigene: 732823](#) Human

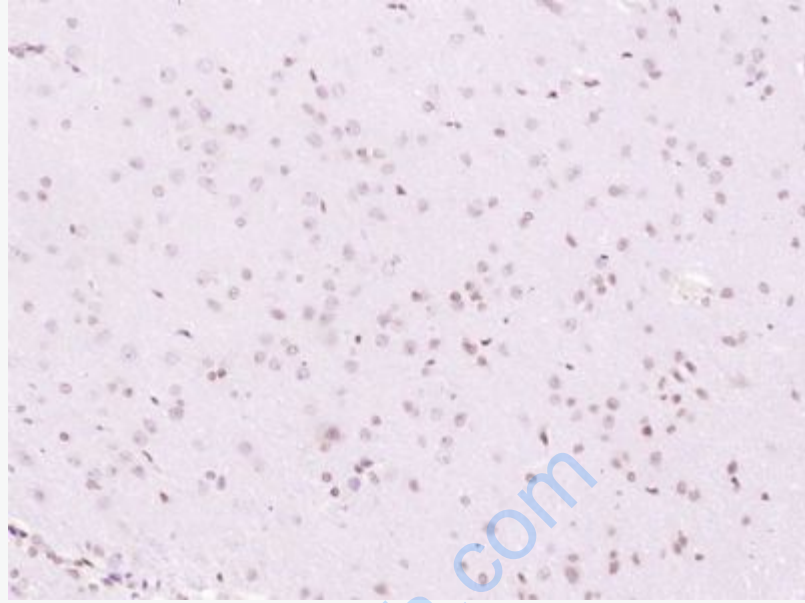
**Important Note:**

This product as supplied is intended for research use only, not for use in human, therapeutic or diagnostic applications.



**Picture:**

Paraformaldehyde-fixed, paraffin embedded (Rat testis); Antigen retrieval by boiling in sodium citrate buffer (pH6.0) for 15min; Block endogenous peroxidase by 3% hydrogen peroxide for 20 minutes; Blocking buffer (normal goat serum) at 37°C for 30min; Antibody incubation with (ZNF638) Polyclonal Antibody, Unconjugated (SL4331R) at 1:400 overnight at 4°C, followed by operating according to SP Kit(Rabbit) (sp-0023) instructions and DAB staining.



Paraformaldehyde-fixed, paraffin embedded (Rat brain); Antigen retrieval by boiling in sodium citrate buffer (pH6.0) for 15min; Block endogenous peroxidase by 3% hydrogen peroxide for 20 minutes; Blocking buffer (normal goat serum) at 37°C for 30min; Antibody incubation with (ZNF638) Polyclonal Antibody, Unconjugated (SL4331R) at 1:400 overnight at 4°C, followed by operating according to SP Kit(Rabbit) (sp-0023) instructions and DAB staining.