



Rabbit Anti-ZNF221 antibody

SL4367R

Product Name:	ZNF221
Chinese Name:	Zinc finger protein221抗体
Alias:	MGC138186; MGC141986; Zinc finger protein 221; ZN221 HUMAN; ZNF221.
Organism Species:	Rabbit
Clonality:	Polyclonal
React Species:	Human,
Applications:	WB=1:500-2000IHC-P=1:400-800IHC-F=1:400-800ICC=1:100-500IF=1:100-500 (Paraffin sections need antigen repair) not yet tested in other applications. optimal dilutions/concentrations should be determined by the end user.
Molecular weight:	71kDa
Cellular localization:	The nucleus
Form:	Lyophilized or Liquid
Concentration:	1mg/ml
immunogen:	KLH conjugated synthetic peptide derived from human ZNF221:101-200/617
Lsotype:	IgG
Purification:	affinity purified by Protein A
Storage Buffer:	Preservative: 15mM Sodium Azide, Constituents: 1% BSA, 0.01M PBS, pH 7.4
Storage:	Store at -20 °C for one year. Avoid repeated freeze/thaw cycles. The lyophilized antibody is stable at room temperature for at least one month and for greater than a year when kept at -20°C. When reconstituted in sterile pH 7.4 0.01M PBS or diluent of antibody the antibody is stable for at least two weeks at 2-4 °C.
PubMed:	PubMed
Product Detail:	ZNF221 (Zinc Finger Protein 221) is a Protein Coding gene. Among its related pathways are Gene Expression. GO annotations related to this gene include nucleic acid binding. An important paralog of this gene is ZNF224. Function: May be involved in transcriptional regulation.

Subcellular Location:

Nucleus.

Similarity:

Belongs to the krueppel C2H2-type zinc-finger protein family.

Contains 15 C2H2-type zinc fingers.

Contains 1 KRAB domain.

SWISS:

Q9UK13

Gene ID:

7638

Database links:

[Entrez Gene: 7638](#) Human

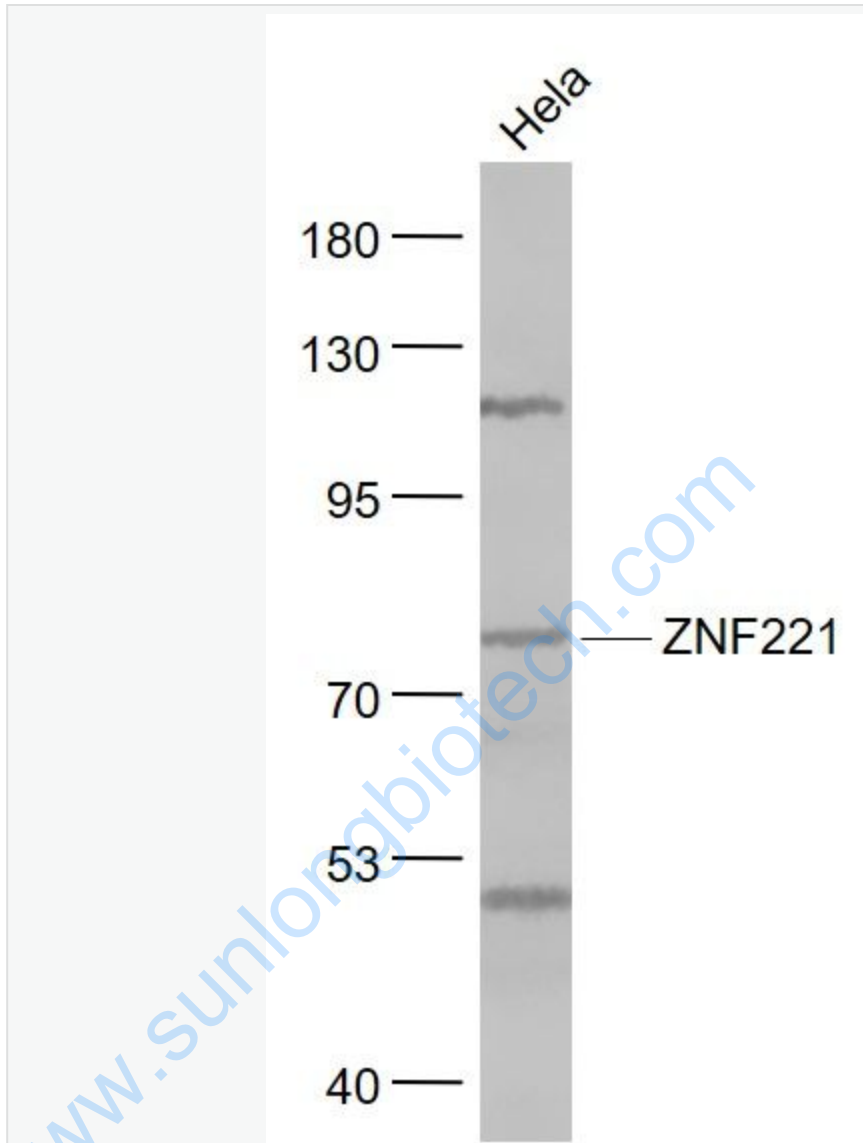
[SwissProt: Q9UK13](#) Human

[Unigene: 631598](#) Human

Important Note:

This product as supplied is intended for research use only, not for use in human, therapeutic or diagnostic applications.

Picture:



Sample:

HeLa(Human) Cell Lysate at 30 ug

Primary: Anti- ZNF221 (SL4367R) at 1/1000 dilution

Secondary: IRDye800CW Goat Anti-Rabbit IgG at 1/20000 dilution

Predicted band size: 71 kD

Observed band size: 72 kD