



Rabbit Anti-ZNF25 antibody

SL4368R

Product Name:	ZNF25
Chinese Name:	Zinc finger protein25抗体
Alias:	DKFZp564C206; FLJ31890; KOX19; Zfp9; Zinc finger protein 25 (KOX 19); Zinc finger protein 25; Zinc finger protein KOX19; ZNF25; ZNF25 HUMAN.
Organism Species:	Rabbit
Clonality:	Polyclonal
React Species:	Human,
Applications:	WB=1:500-2000IHC-P=1:400-800IHC-F=1:400-800ICC=1:100-500IF=1:100-500 (Paraffin sections need antigen repair) not yet tested in other applications. optimal dilutions/concentrations should be determined by the end user.
Molecular weight:	54kDa
Cellular localization:	The nucleus
Form:	Lyophilized or Liquid
Concentration:	1mg/ml
immunogen:	KLH conjugated synthetic peptide derived from human ZNF25:31-130/456
Lsotype:	IgG
Purification:	affinity purified by Protein A
Storage Buffer:	Preservative: 15mM Sodium Azide, Constituents: 1% BSA, 0.01M PBS, pH 7.4
Storage:	Store at -20 °C for one year. Avoid repeated freeze/thaw cycles. The lyophilized antibody is stable at room temperature for at least one month and for greater than a year when kept at -20°C. When reconstituted in sterile pH 7.4 0.01M PBS or diluent of antibody the antibody is stable for at least two weeks at 2-4 °C.
PubMed:	PubMed
Product Detail:	ZNF25 (Zinc Finger Protein 25) is a Protein Coding gene. Among its related pathways are Gene Expression. GO annotations related to this gene include nucleic acid binding. An important paralog of this gene is ZNF33B. Function: May be involved in transcriptional regulation.

Subcellular Location:

Nucleus.

Similarity:

Belongs to the krueppel C2H2-type zinc-finger protein family.

Contains 12 C2H2-type zinc fingers.

Contains 1 KRAB domain.

SWISS:

P17030

Gene ID:

219749

Database links:

[Entrez Gene: 219749](#) Human

[Entrez Gene: 22750](#) Mouse

[Entrez Gene: 100158232](#) Rat

[Omim: 194528](#) Human

[SwissProt: P17030](#) Human

[Unigene: 499429](#) Human

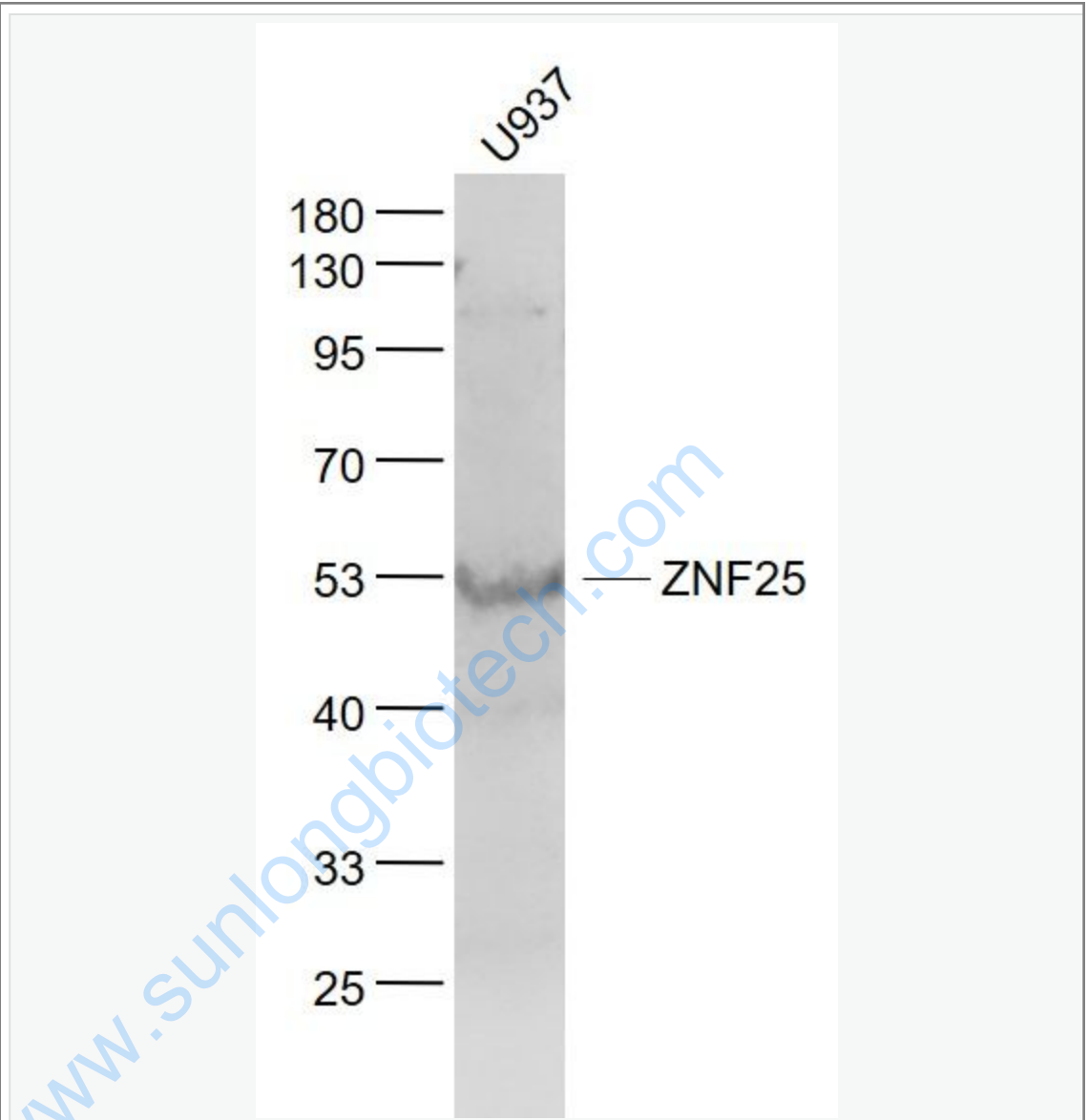
[Unigene: 106970](#) Mouse

[Unigene: 134220](#) Rat

Important Note:

This product as supplied is intended for research use only, not for use in human, therapeutic or diagnostic applications.

Picture:



Sample:

U937(Human) Cell Lysate at 30 ug

Primary: Anti- ZNF25 (SL4368R) at 1/1000 dilution

Secondary: IRDye800CW Goat Anti-Rabbit IgG at 1/20000 dilution

Predicted band size: 54 kD

Observed band size: 53 kD

