



## Rabbit Anti-ZPBP1 antibody

SL4383R

<b>Product Name:</b>	ZPBP1
<b>Chinese Name:</b>	透明带Binding protein抗体
<b>Alias:</b>	4930486K01Rik; FLJ9322; Iam38; OTTHUMP00000208840; OTTMUSP00000008129; RP23-446K7.1; Sp38; Zona pellucida binding protein; Zona pellucida binding protein 1; ZPBP.
<b>Organism Species:</b>	Rabbit
<b>Clonality:</b>	Polyclonal
<b>React Species:</b>	Human,Dog,Pig,Cow,Sheep,
<b>Applications:</b>	WB=1:500-2000ELISA=1:500-1000IHC-P=1:400-800IHC-F=1:400-800ICC=1:100-500IF=1:100-500 (Paraffin sections need antigen repair) not yet tested in other applications. optimal dilutions/concentrations should be determined by the end user.
<b>Molecular weight:</b>	40kDa
<b>Cellular localization:</b>	Secretory protein
<b>Form:</b>	Lyophilized or Liquid
<b>Concentration:</b>	1mg/ml
<b>immunogen:</b>	KLH conjugated synthetic peptide derived from human ZPBP1:201-300/351
<b>Lsotype:</b>	IgG
<b>Purification:</b>	affinity purified by Protein A
<b>Storage Buffer:</b>	Preservative: 15mM Sodium Azide, Constituents: 1% BSA, 0.01M PBS, pH 7.4
<b>Storage:</b>	Store at -20 °C for one year. Avoid repeated freeze/thaw cycles. The lyophilized antibody is stable at room temperature for at least one month and for greater than a year when kept at -20°C. When reconstituted in sterile pH 7.4 0.01M PBS or diluent of antibody the antibody is stable for at least two weeks at 2-4 °C.
<b>PubMed:</b>	<a href="#">PubMed</a>
<b>Product Detail:</b>	ZPBP1 is one of several proteins that are thought to participate in secondary binding between acrosome-reacted sperm and the egg-specific extracellular matrix, the zona pellucida  <b>Function:</b>

May be implicated in gamete interaction during fertilization.

**Subcellular Location:**

Secreted.

**SWISS:**

Q9BS86

**Gene ID:**

11055

**Database links:**

[Entrez Gene: 11055](#)Human

[Entrez Gene: 53604](#)Mouse

[Entrez Gene: 397194](#)Pig

[Omim: 608498](#)Human

[SwissProt: Q9BS86](#)Human

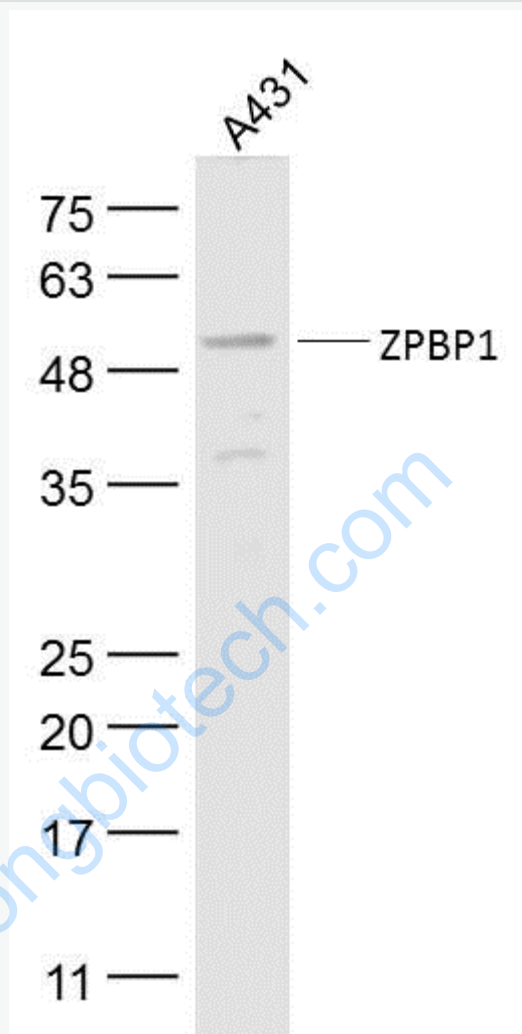
[SwissProt: Q62522](#)Mouse

[SwissProt: Q29108](#)Pig

**Important Note:**

This product as supplied is intended for research use only, not for use in human, therapeutic or diagnostic applications.

Picture:



Sample:

A431(Human) Cell Lysate at 30 ug

Primary: Anti- ZPBP1 (SL4383R) at 1/300 dilution

Secondary: IRDye800CW Goat Anti-Rabbit IgG at 1/20000 dilution

Predicted band size: 40 kD

Observed band size: 55 kD