



## Rabbit Anti-NXPH4 antibody

SL4411R

<b>Product Name:</b>	NXPH4
<b>Chinese Name:</b>	神经外营养蛋白4抗体
<b>Alias:</b>	Neurexophilin 4; NPH4; NXPH 4.
<b>Organism Species:</b>	Rabbit
<b>Clonality:</b>	Polyclonal
<b>React Species:</b>	Human,Mouse,Rat,Dog,Pig,Cow,Horse,Sheep,
<b>Applications:</b>	ELISA=1:500-1000IHC-P=1:400-800IHC-F=1:400-800ICC=1:100-500IF=1:100-500 (Paraffin sections need antigen repair) not yet tested in other applications. optimal dilutions/concentrations should be determined by the end user.
<b>Molecular weight:</b>	33kDa
<b>Cellular localization:</b>	Secretory protein
<b>Form:</b>	Lyophilized or Liquid
<b>Concentration:</b>	1mg/ml
<b>immunogen:</b>	KLH conjugated synthetic peptide derived from human NXPH4:241-308/308
<b>Lsotype:</b>	IgG
<b>Purification:</b>	affinity purified by Protein A
<b>Storage Buffer:</b>	Preservative: 15mM Sodium Azide, Constituents: 1% BSA, 0.01M PBS, pH 7.4
<b>Storage:</b>	Store at -20 °C for one year. Avoid repeated freeze/thaw cycles. The lyophilized antibody is stable at room temperature for at least one month and for greater than a year when kept at -20°C. When reconstituted in sterile pH 7.4 0.01M PBS or diluent of antibody the antibody is stable for at least two weeks at 2-4 °C.
<b>PubMed:</b>	<a href="#">PubMed</a>
<b>Product Detail:</b>	NXPH4 is a neurexophilin. Mammalian brains contain four different neurexophilin proteins. Neurexophilins form a family of related glycoproteins that are proteolytically processed after synthesis and bind to alpha neurexins. The structure and characteristics of neurexophilins indicate that they function as neuropeptides that may signal via alpha neurexins and possibly other receptors.  <b>Function:</b>

May be signaling molecules that resemble neuropeptides and that act by binding to alpha-neurexins and possibly other receptors.

**Subcellular Location:**

Secreted.

**Tissue Specificity:**

Expressed in brain, spleen, and testis.

**Post-translational modifications:**

May be proteolytically processed at the boundary between the N-terminal non-conserved and the central conserved domain in neuron-like cells.

**Similarity:**

Belongs to the neurexophilin family.

**SWISS:**

O95158

**Gene ID:**

11247

**Database links:**

[Entrez Gene: 11247](#) Human

[Entrez Gene: 59316](#) Rat

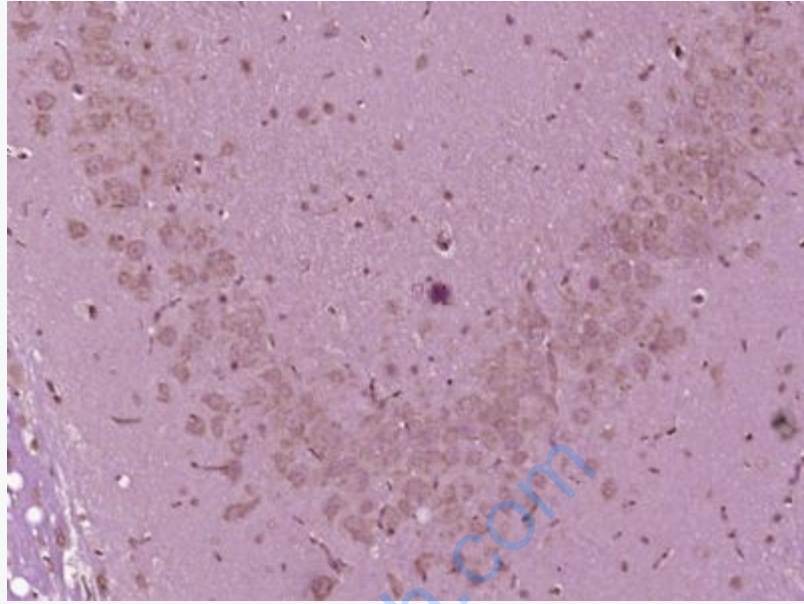
[Oimim: 604637](#) Human

[SwissProt: O95158](#) Human

[SwissProt: Q9Z2N4](#) Rat

**Important Note:**

This product as supplied is intended for research use only, not for use in human, therapeutic or diagnostic applications.



**Picture:**

Paraformaldehyde-fixed, paraffin embedded (Rat brain); Antigen retrieval by boiling in sodium citrate buffer (pH6.0) for 15min; Block endogenous peroxidase by 3% hydrogen peroxide for 20 minutes; Blocking buffer (normal goat serum) at 37°C for 30min; Antibody incubation with (NXPH4) Polyclonal Antibody, Unconjugated (SL4411R) at 1:400 overnight at 4°C, followed by operating according to SP Kit(Rabbit) (sp-0023) instructions and DAB staining.