



## Rabbit Anti-PTPN20 antibody

SL4431R

<b>Product Name:</b>	PTPN20
<b>Chinese Name:</b>	蛋白酪氨酸磷酸酶非受体型20抗体
<b>Alias:</b>	bA42B19.1; hPTPN20; Protein tyrosine phosphatase non receptor type 20; PTN20_HUMAN; PTP Typ; PTP Typ; Ptpn20; PTPN20A; PTPN20B; Tyrosine-protein phosphatase non-receptor type 20.
<b>Organism Species:</b>	Rabbit
<b>Clonality:</b>	Polyclonal
<b>React Species:</b>	Human,Mouse,Rat,Pig,
<b>Applications:</b>	WB=1:500-2000ELISA=1:500-1000IHC-P=1:400-800IHC-F=1:400-800ICC=1:100-500IF=1:100-500 (Paraffin sections need antigen repair) not yet tested in other applications. optimal dilutions/concentrations should be determined by the end user.
<b>Molecular weight:</b>	48kDa
<b>Cellular localization:</b>	The nucleuscytoplasmic
<b>Form:</b>	Lyophilized or Liquid
<b>Concentration:</b>	1mg/ml
<b>immunogen:</b>	KLH conjugated synthetic peptide derived from human PTPN20:261-360/420
<b>Lsotype:</b>	IgG
<b>Purification:</b>	affinity purified by Protein A
<b>Storage Buffer:</b>	Preservative: 15mM Sodium Azide, Constituents: 1% BSA, 0.01M PBS, pH 7.4
<b>Storage:</b>	Store at -20 °C for one year. Avoid repeated freeze/thaw cycles. The lyophilized antibody is stable at room temperature for at least one month and for greater than a year when kept at -20°C. When reconstituted in sterile pH 7.4 0.01M PBS or diluent of antibody the antibody is stable for at least two weeks at 2-4 °C.
<b>PubMed:</b>	<a href="#">PubMed</a>
<b>Product Detail:</b>	The product of this gene belongs to the family of classical tyrosine-specific protein tyrosine phosphatases. Many protein tyrosine phosphatases have been shown to regulate fundamental cellular processes. The encoded protein appears to be targeted to sites of actin polymerization. A pseudogene of this gene has been defined on chromosome 10. Alternative splicing results in multiple transcript variants. [provided by RefSeq, Apr

2014]

**Function:**

Tyrosine-protein phosphatase targeted to sites of actin polymerization in response of varied extracellular stimuli. Has tyrosine phosphatase activity towards various tyrosyl phosphorylated substrates.

**Subcellular Location:**

Nucleus. Cytoplasm. Cytoplasm > cytoskeleton > centrosome. Colocalizes with the microtubule-organizing center and intracellular membrane compartments.

**Tissue Specificity:**

Present in many cell lines (at protein level). Widely expressed.

**Post-translational modifications:**

Phosphorylated upon DNA damage, probably by ATM or ATR.

**Similarity:**

Belongs to the protein-tyrosine phosphatase family.

Non-receptor class subfamily.

Contains 1 tyrosine-protein phosphatase domain.

**SWISS:**

Q4JDL3

**Gene ID:**

26095

**Database links:**

[Entrez Gene: 26095](#) Human

[Entrez Gene: 653129](#) Human

[Omim: 610630](#) Human

[Omim: 610631](#) Human

[SwissProt: Q4JDL3](#) Human

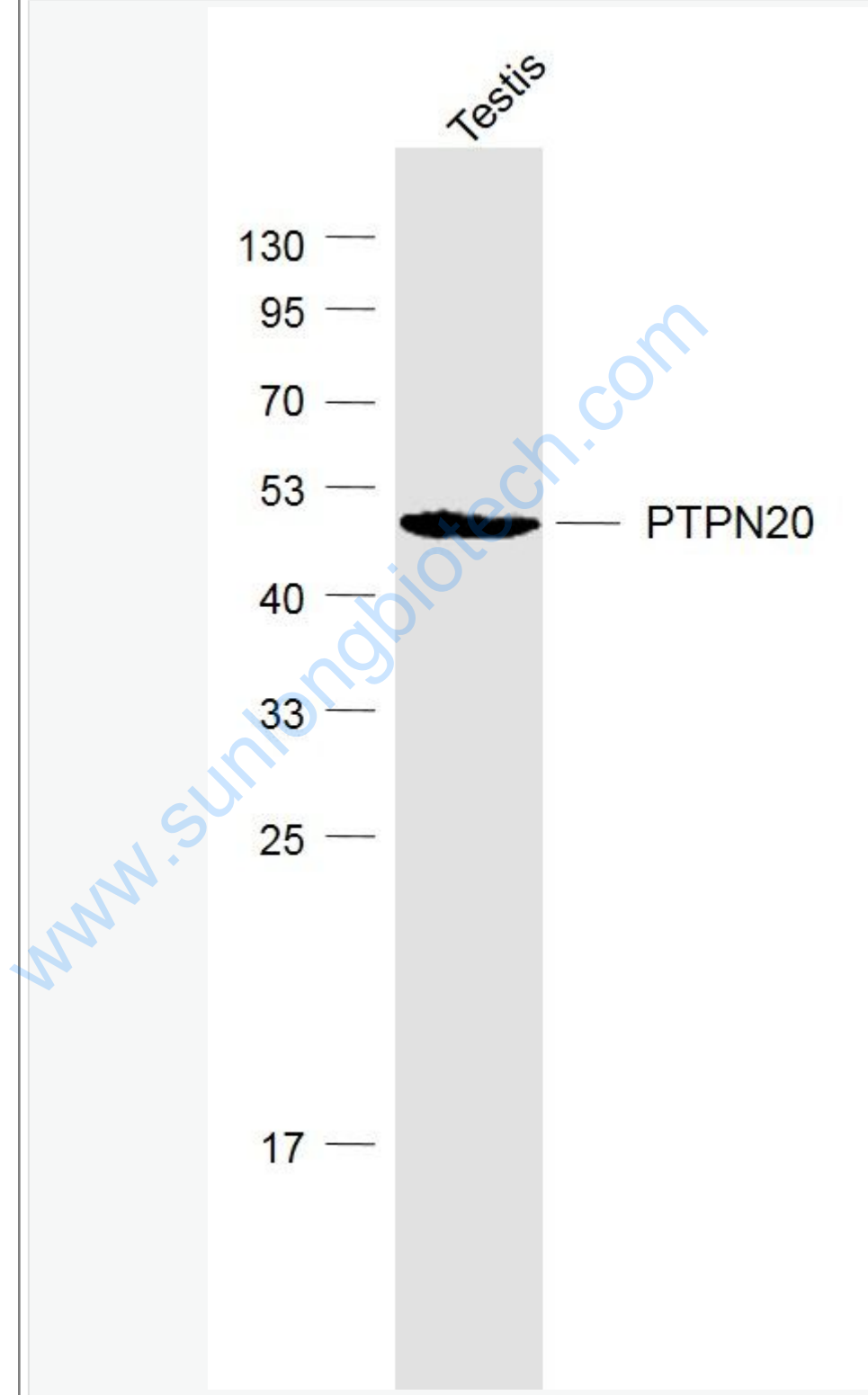
[Unigene: 440733](#) Human

[Unigene: 499552](#) Human

**Important Note:**

This product as supplied is intended for research use only, not for use in human, therapeutic or diagnostic applications.

Picture:



Sample:

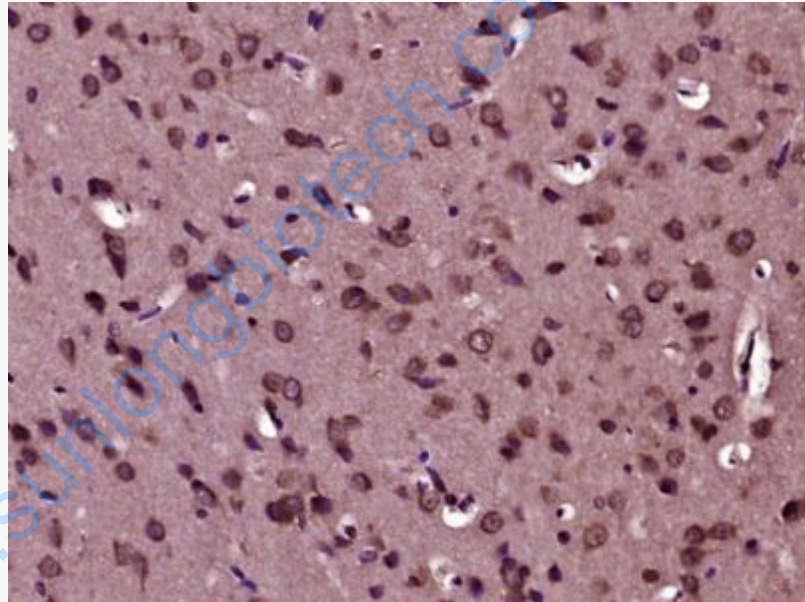
Testis (Mouse) Lysate at 40 ug

Primary: Anti-PTPN20 (SL4431R) at 1/1000 dilution

Secondary: IRDye800CW Goat Anti-Rabbit IgG at 1/20000 dilution

Predicted band size: 48 kD

Observed band size: 48 kD



Paraformaldehyde-fixed, paraffin embedded (Rat brain); Antigen retrieval by boiling in sodium citrate buffer (pH6.0) for 15min; Block endogenous peroxidase by 3% hydrogen peroxide for 20 minutes; Blocking buffer (normal goat serum) at 37°C for 30min; Antibody incubation with (PTPN20) Polyclonal Antibody, Unconjugated (SL4431R) at 1:400 overnight at 4°C, followed by operating according to SP Kit(Rabbit) (sp-0023) instructions and DAB staining.