



## Rabbit Anti-ICAM1 antibody

SL4615R

<b>Product Name:</b>	ICAM1
<b>Chinese Name:</b>	细胞间粘附分子1抗体
<b>Alias:</b>	BB2; CD54 antigen; CD54; ICAM1; ICAM 1; ICAM-1; Cell surface glycoprotein P3.58; Human rhinovirus receptor; Intercellular adhesion molecule 1; Major group rhinovirus receptor; MALA2; MyD10; P3.58; Surface antigen of activated B cells; ICAM1_HUMAN; MALA-2; MyD10; intercellular adhesion molecule 1 precursor; intercellular adhesion molecule 1 (CD54), human rhinovirus receptor; major group rhinovirus receptor.
<b>Organism Species:</b>	Rabbit
<b>Clonality:</b>	Polyclonal
<b>React Species:</b>	Human,Mouse,Rabbit,
<b>Applications:</b>	WB=1:500-2000ELISA=1:500-1000Flow-Cyt=1µg/Test not yet tested in other applications. optimal dilutions/concentrations should be determined by the end user.
<b>Molecular weight:</b>	56kDa
<b>Cellular localization:</b>	The cell membrane
<b>Form:</b>	Lyophilized or Liquid
<b>Concentration:</b>	1mg/ml
<b>immunogen:</b>	KLH conjugated synthetic peptide derived from human CD54/ICAM-1:451-505/532<Cytoplasmic>
<b>Lsotype:</b>	IgG
<b>Purification:</b>	affinity purified by Protein A
<b>Storage Buffer:</b>	0.01M TBS(pH7.4) with 1% BSA, 0.03% Proclin300 and 50% Glycerol.
<b>Storage:</b>	Store at -20 °C for one year. Avoid repeated freeze/thaw cycles. The lyophilized antibody is stable at room temperature for at least one month and for greater than a year when kept at -20°C. When reconstituted in sterile pH 7.4 0.01M PBS or diluent of antibody the antibody is stable for at least two weeks at 2-4 °C.
<b>PubMed:</b>	<a href="#">PubMed</a>
<b>Product Detail:</b>	This gene encodes a cell surface glycoprotein which is typically expressed on endothelial cells and cells of the immune system. It binds to integrins of type CD11a /

CD18, or CD11b / CD18 and is also exploited by Rhinovirus as a receptor. [provided by RefSeq, Jul 2008].

**Function:**

ICAM proteins are ligands for the leukocyte adhesion protein LFA-1 (integrin alpha-L/beta-2). During leukocyte trans-endothelial migration, ICAM1 engagement promotes the assembly of endothelial apical cups through ARHGEF26/SGEF and RHOG activation. In case of rhinovirus infection acts as a cellular receptor for the virus.

**Subunit:**

Homodimer (Probable). Interacts with human herpesvirus 8 MIR2 protein (Probable). Interacts with MUC1 and promotes cell aggregation in epithelial cells. Interacts with ARHGEF26/SGEF. Binds to coxsackievirus A21 capsid proteins and acts as a receptor for this virus.

**Subcellular Location:**

Membrane; Single-pass type I membrane protein.

**Post-translational modifications:**

Monoubiquitinated, which is promoted by MARCH9 and leads to endocytosis.

**Similarity:**

Belongs to the immunoglobulin superfamily. ICAM family. Contains 5 Ig-like C2-type (immunoglobulin-like) domains.

**SWISS:**

P05362

**Gene ID:**

3383

**Database links:**

[Entrez Gene: 3383](#)Human

[Entrez Gene: 15894](#)Mouse

[Entrez Gene: 25464](#)Rat

[Omim: 147840](#)Human

[Unigene: 643447](#)Human

[SwissProt: P05362](#)Human

[SwissProt: P13597](#)Mouse

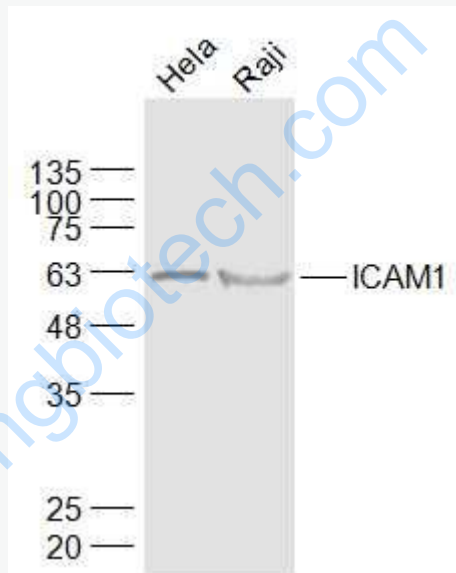
[SwissProt: Q00238](#)Rat

[Unigene: 435508](#)Mouse

[Unigene: 12](#)Rat

**Important Note:**

This product as supplied is intended for research use only, not for use in human, therapeutic or diagnostic applications.



**Picture:**

Sample:

HeLa(Human) Cell Lysate at 30 ug

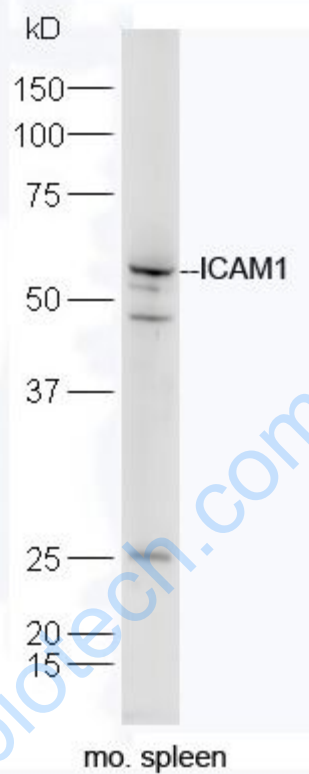
Raji(Human) Cell Lysate at 30 ug

Primary: Anti-ICAM1 (SL4615R) at 1/1000 dilution

Secondary: IRDye800CW Goat Anti-Rabbit IgG at 1/20000 dilution

Predicted band size: 56 kD

Observed band size: 61 kD



Sample:

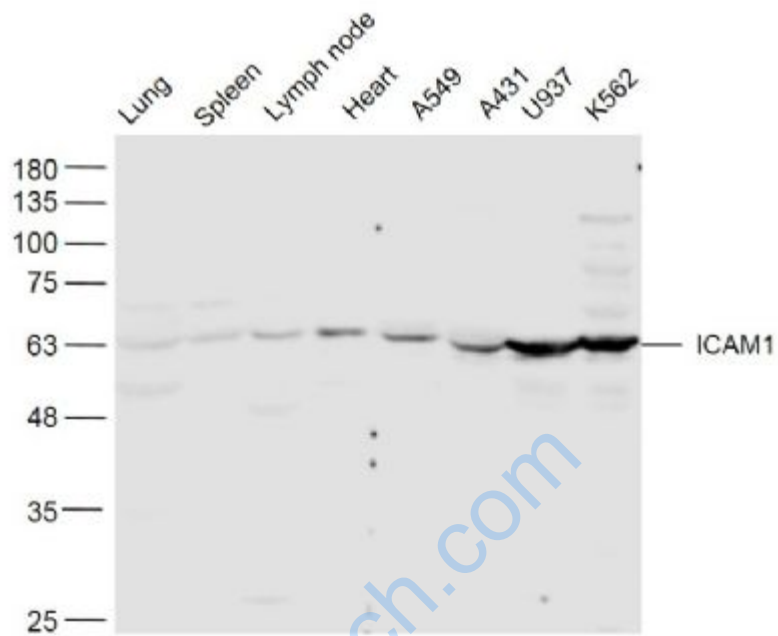
Spleen (Mouse) Lysate at 40 ug

Primary: Anti-ICAM1 (SL4615R) at 1/300 dilution

Secondary: IRDye800CW Goat Anti-Rabbit IgG at 1/20000 dilution

Predicted band size: 56 kD

Observed band size: 56 kD



Sample:

Lung (Mouse) Lysate at 40 ug

Spleen (Mouse) Lysate at 40 ug

Lymph node (Mouse) Lysate at 40 ug

Heart (Mouse) Lysate at 40 ug

A549(Human) Cell Lysate at 40 ug

A431(Human) Cell Lysate at 40 ug

U937(Human) Cell Lysate at 40 ug

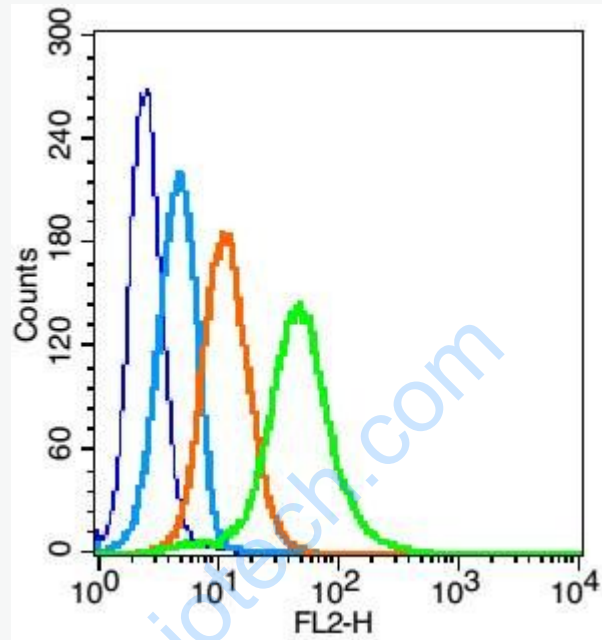
K562(Human) Cell Lysate at 40 ug

Primary: Anti- ICAM1 (SL4615R) at 1/300 dilution

Secondary: IRDye800CW Goat Anti-Rabbit IgG at 1/20000 dilution

Predicted band size: 56 kD

Observed band size: 56 kD



Blank control(blue): U937(fixed with 2% paraformaldehyde (10 min)).

Primary Antibody: Rabbit Anti-ICAM1 antibody(SL4615R), Dilution: 1 $\mu$ g in 100  $\mu$ L 1X PBS containing 0.5% BSA;

Isotype Control Antibody: Rabbit IgG (orange) ,used under the same conditions.

Secondary Antibody: Goat anti-rabbit IgG-PE(white blue), Dilution: 1:200 in 1 X PBS containing 0.5% BSA.