



Rabbit Anti-HOMER2 antibody

SL4632R

Product Name:	HOMER2
Chinese Name:	HOMER2抗体
Alias:	ACPD; CPD; Cupidin; HOME2_HUMAN; HOMER 2; HOMER 2A; HOMER 2B; Homer homolog 2 (Drosophila); Homer homolog 3; Homer neuronal immediate early gene 2; Homer protein homolog 2; Homer-2; Homer2; HOMER2A; HOMER2B; Vesl 2; Vesl2.
Organism Species:	Rabbit
Clonality:	Polyclonal
React Species:	Human,Mouse,Rat,Pig,Cow,Rabbit,
Applications:	WB=1:500-2000ELISA=1:500-1000IHC-P=1:400-800IHC-F=1:400-800ICC=1:100-500IF=1:100-500 (Paraffin sections need antigen repair) not yet tested in other applications. optimal dilutions/concentrations should be determined by the end user.
Molecular weight:	39kDa
Cellular localization:	cytoplasmicThe cell membraneExtracellular matrix
Form:	Lyophilized or Liquid
Concentration:	1mg/ml
immunogen:	KLH conjugated synthetic peptide derived from human HOMER2:301-354/354
Lsotype:	IgG
Purification:	affinity purified by Protein A
Storage Buffer:	0.01M TBS(pH7.4) with 1% BSA, 0.03% Proclin300 and 50% Glycerol.
Storage:	Store at -20 °C for one year. Avoid repeated freeze/thaw cycles. The lyophilized antibody is stable at room temperature for at least one month and for greater than a year when kept at -20°C. When reconstituted in sterile pH 7.4 0.01M PBS or diluent of antibody the antibody is stable for at least two weeks at 2-4 °C.
PubMed:	PubMed
Product Detail:	This gene encodes a member of the homer family of dendritic proteins. Members of this family regulate group 1 metabotropic glutamate receptor function. The encoded protein is a postsynaptic density scaffolding protein. Alternative splicing results in multiple transcript variants. Two related pseudogenes have been identified on chromosome 14.

[provided by RefSeq, Jun 2011]

Function:

Postsynaptic density scaffolding protein. Binds and cross-links cytoplasmic regions of GRM1, GRM5, ITPR1, DNM3, RYR1, RYR2, SHANK1 and SHANK3. By physically linking GRM1 and GRM5 with ER-associated ITPR1 receptors, it aids the coupling of surface receptors to intracellular calcium release. May also couple GRM1 to PI3 kinase through its interaction with AGAP2. Isoforms can be differently regulated and may play an important role in maintaining the plasticity at glutamatergic synapses.

Subunit:

Isoform 1 and isoform 2 encode coiled-coil structures that mediate homo- and heteromultimerization.

Subcellular Location:

Cytoplasm. Cell junction, synapse, postsynaptic cell membrane, postsynaptic density. Cell junction, synapse. Note=Postsynaptic density of neuronal cells. The stabilization and clustering of the metabotropic glutamate receptors appears to be mediated by isoform 1 and isoform 2 at the cell surface.

Similarity:

Belongs to the Homer family.
Contains 1 WH1 domain.

SWISS:

Q9NSB8

Gene ID:

9455

Database links:

[Entrez Gene: 510811](#)Cow

[Entrez Gene: 9455](#)Human

[Entrez Gene: 26557](#)Mouse

[Entrez Gene: 29547](#)Rat

[Omim: 604799](#)Human

[SwissProt: Q9NSB8](#)Human

[SwissProt: Q9QWW1](#)Mouse

[SwissProt: O88801](#)Rat

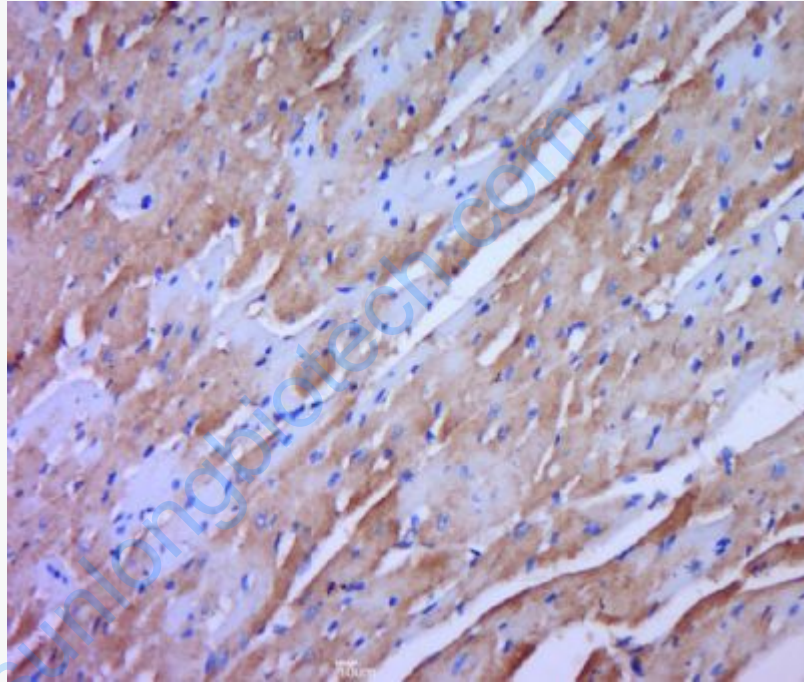
[Unigene: 578443](#)Human

[Unigene: 228](#)Mouse

[Unigene: 30014](#)Rat

Important Note:

This product as supplied is intended for research use only, not for use in human, therapeutic or diagnostic applications.



Picture:

Paraformaldehyde-fixed, paraffin embedded (rat heart tissue); Antigen retrieval by boiling in sodium citrate buffer (pH6.0) for 15min; Block endogenous peroxidase by 3% hydrogen peroxide for 20 minutes; Blocking buffer (normal goat serum) at 37°C for 30min; Antibody incubation with (HOMER2) Polyclonal Antibody, Unconjugated (bs4632R) at 1:400 overnight at 4°C, followed by a conjugated secondary (sp-0023) for 20 minutes and DAB staining.