



## Rabbit Anti-Alpha B Crystallin antibody

SL4651R

<b>Product Name:</b>	Alpha B Crystallin
<b>Chinese Name:</b>	$\alpha$ 晶状体球蛋白B/ $\alpha$ B-crystallin抗体
<b>Alias:</b>	CRYAB; CRYA2; Alpha crystallin B chain; AACRYA; Alpha B crystalline; Alpha crystallin B chain; Alpha(B) crystalline; Alpha(B)-crystallin; Alpha-crystallin B chain; CRYAB_HUMAN; Crystallin alpha B; Crystallin alpha polypeptide 2; CTPP 2; CTPP2; Heat shock 20 kD like protein; Heat shock protein beta 5; Heat shock protein beta-5; HSPB5; NY REN 27 antigen; Renal carcinoma antigen NY REN 27; Renal carcinoma antigen NY-REN-27; Rosenthal fiber component.
<b>Organism Species:</b>	Rabbit
<b>Clonality:</b>	Polyclonal
<b>React Species:</b>	Human,Mouse,Rat,Dog,Pig,Cow,Horse,
<b>Applications:</b>	ELISA=1:500-1000IHC-P=1:400-800IHC-F=1:400-800ICC=1:100-500IF=1:100-500 (Paraffin sections need antigen repair) not yet tested in other applications. optimal dilutions/concentrations should be determined by the end user.
<b>Molecular weight:</b>	20kDa
<b>Cellular localization:</b>	The nucleuscytoplasmic
<b>Form:</b>	Lyophilized or Liquid
<b>Concentration:</b>	1mg/ml
<b>immunogen:</b>	KLH conjugated synthetic peptide derived from human Alpha B Crystallin.:51-150/175
<b>Lsotype:</b>	IgG
<b>Purification:</b>	affinity purified by Protein A
<b>Storage Buffer:</b>	0.01M TBS(pH7.4) with 1% BSA, 0.03% Proclin300 and 50% Glycerol.
<b>Storage:</b>	Store at -20 °C for one year. Avoid repeated freeze/thaw cycles. The lyophilized antibody is stable at room temperature for at least one month and for greater than a year when kept at -20°C. When reconstituted in sterile pH 7.4 0.01M PBS or diluent of antibody the antibody is stable for at least two weeks at 2-4 °C.
<b>PubMed:</b>	<a href="#">PubMed</a>
<b>Product Detail:</b>	Crystallins are separated into two classes: taxon-specific, or enzyme, and ubiquitous. The latter class constitutes the major proteins of vertebrate eye lens and maintains the

transparency and refractive index of the lens. Since lens central fiber cells lose their nuclei during development, these crystallins are made and then retained throughout life, making them extremely stable proteins. Mammalian lens crystallins are divided into alpha, beta, and gamma families; beta and gamma crystallins are also considered as a superfamily. Alpha and beta families are further divided into acidic and basic groups. Seven protein regions exist in crystallins: four homologous motifs, a connecting peptide, and N- and C-terminal extensions. Alpha crystallins are composed of two gene products: alpha-A and alpha-B, for acidic and basic, respectively. Alpha crystallins can be induced by heat shock and are members of the small heat shock protein (sHSP also known as the HSP20) family. They act as molecular chaperones although they do not renature proteins and release them in the fashion of a true chaperone; instead they hold them in large soluble aggregates. Post-translational modifications decrease the ability to chaperone. These heterogeneous aggregates consist of 30-40 subunits; the alpha-A and alpha-B subunits have a 3:1 ratio, respectively. Two additional functions of alpha crystallins are an autokinase activity and participation in the intracellular architecture. Alpha-A and alpha-B gene products are differentially expressed; alpha-A is preferentially restricted to the lens and alpha-B is expressed widely in many tissues and organs. Elevated expression of alpha-B crystallin occurs in many neurological diseases; a missense mutation cosegregated in a family with a desmin-related myopathy. [provided by RefSeq, Jul 2008].

**Function:**

May contribute to the transparency and refractive index of the lens. Has chaperone-like activity, preventing aggregation of various proteins under a wide range of stress conditions.

**Subunit:**

Heteropolymer composed of three CRYAA and one CRYAB subunits. Aggregates with homologous proteins, including the small heat shock protein HSPB1, to form large heteromeric complexes. Inter-subunit bridging via zinc ions enhances stability, which is crucial as there is no protein turn over in the lens. Interacts with HSPBAP1 and TTN/titin.

**Subcellular Location:**

Cytoplasm. Nucleus. Note=Translocates to the nucleus during heat shock and resides in sub-nuclear structures known as SC35 speckles or nuclear splicing speckles.

**Tissue Specificity:**

Lens as well as other tissues.

**DISEASE:**

Defects in CRYAB are the cause of myopathy myofibrillar type 2 (MFM2) [MIM:608810]. A neuromuscular disorder that results in weakness of the proximal and distal limb muscles, weakness of the neck, velopharynx and trunk muscles, hypertrophic cardiomyopathy, and cataract in a subset of patients.

[DISEASE] Defects in CRYAB are the cause of cataract posterior polar type 2 (CTPP2)

[MIM:613763]. A subcapsular opacity, usually disk-shaped, located at the back of the lens. It can have a marked effect on visual acuity.

[DISEASE] Defects in CRYAB are the cause of myopathy myofibrillar fatal infantile hypertonic alpha-B crystallin-related (MFMFIH-CRYAB) [MIM:613869]. MFMFIH-CRYAB is a muscular dystrophy with onset in the first weeks of life after a normal neonatal period. Affected infants show rapidly progressive muscular rigidity of the trunk and limbs associated with increasing respiratory difficulty resulting in death before age 3 years.

**Similarity:**

Belongs to the small heat shock protein (HSP20) family.

**SWISS:**

P02511

**Gene ID:**

1410

**Database links:**

[Entrez Gene: 1410](#)Human

[Entrez Gene: 12955](#)Mouse

[Entrez Gene: 25420](#)Rat

[Omim: 123590](#)Human

[SwissProt: P02511](#)Human

[SwissProt: P23927](#)Mouse

[SwissProt: P23928](#)Rat

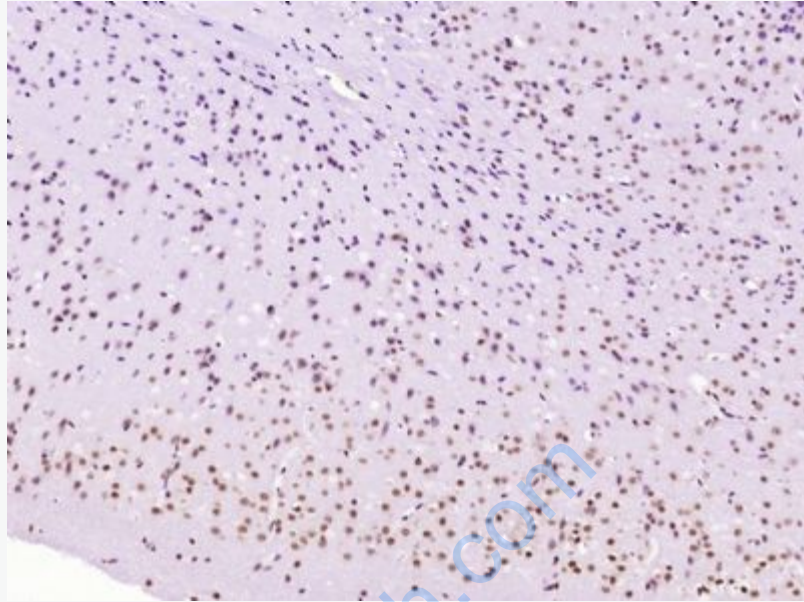
[Unigene: 53454](#)Human

[Unigene: 178](#)Mouse

[Unigene: 98208](#)Rat

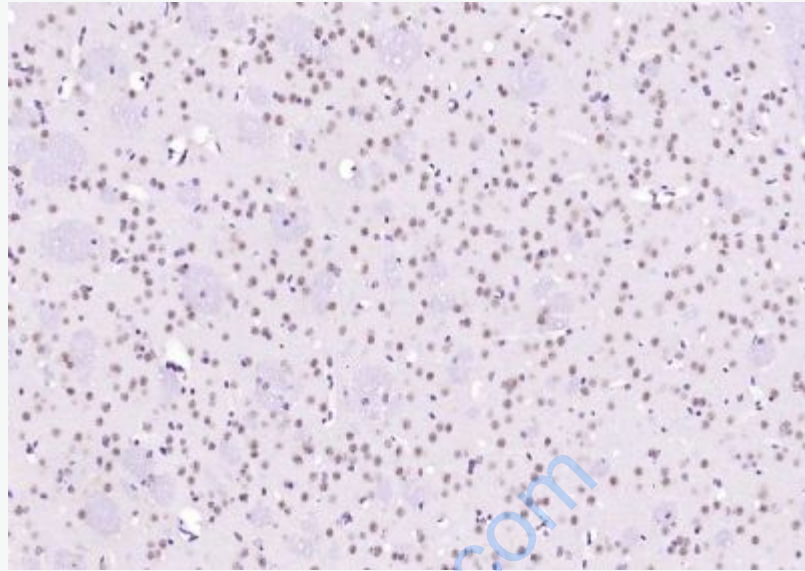
**Important Note:**

This product as supplied is intended for research use only, not for use in human, therapeutic or diagnostic applications.

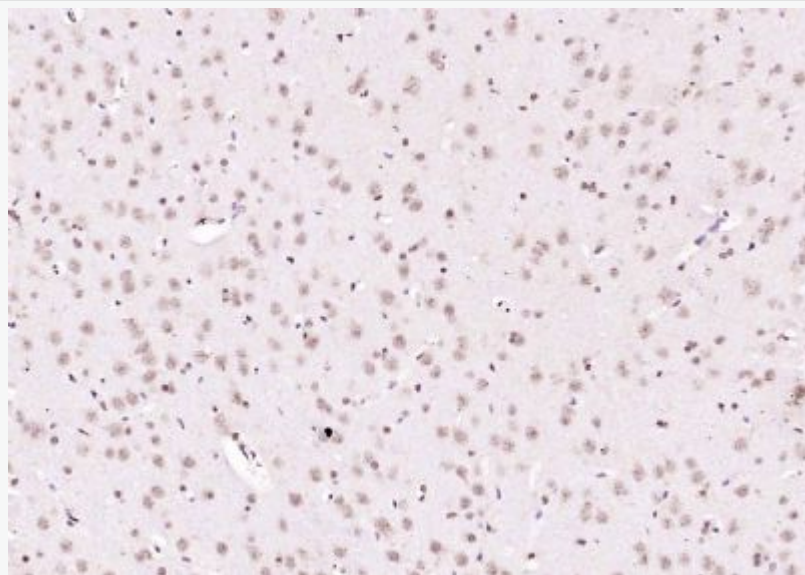


**Picture:**

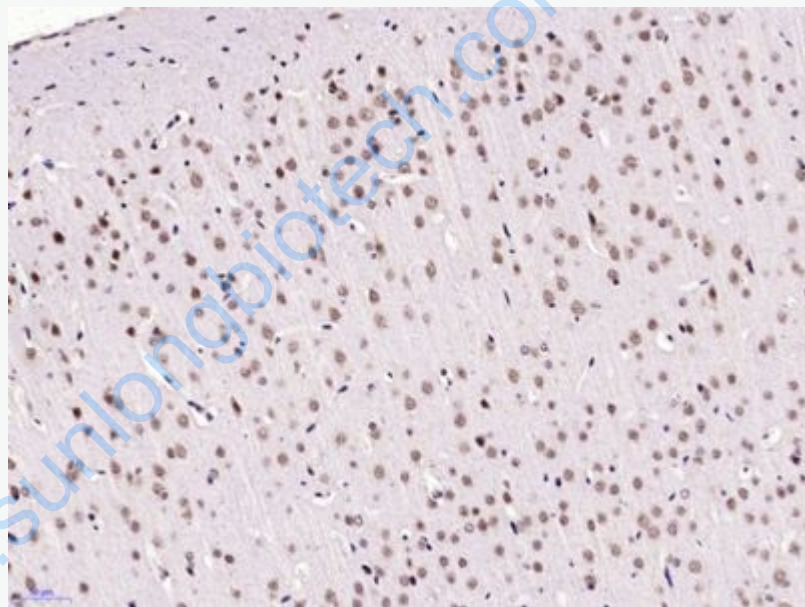
Paraformaldehyde-fixed, paraffin embedded (Mouse brain); Antigen retrieval by boiling in sodium citrate buffer (pH6.0) for 15min; Block endogenous peroxidase by 3% hydrogen peroxide for 20 minutes; Blocking buffer (normal goat serum) at 37°C for 30min; Antibody incubation with (Alpha B Crystallin) Polyclonal Antibody, Unconjugated (SL4651R) at 1:400 overnight at 4°C, followed by operating according to SP Kit(Rabbit) (sp-0023) instructions and DAB staining.



Paraformaldehyde-fixed, paraffin embedded (mouse brain tissue); Antigen retrieval by boiling in sodium citrate buffer (pH6.0) for 15min; Block endogenous peroxidase by 3% hydrogen peroxide for 20 minutes; Blocking buffer (normal goat serum) at 37°C for 30min; Antibody incubation with (Alpha B Crystallin) Polyclonal Antibody, Unconjugated (SL4651R) at 1:400 overnight at 4°C, followed by operating according to SP Kit(Rabbit) (sp-0023) instructions and DAB staining.



Paraformaldehyde-fixed, paraffin embedded (rat brain tissue); Antigen retrieval by boiling in sodium citrate buffer (pH6.0) for 15min; Block endogenous peroxidase by 3% hydrogen peroxide for 20 minutes; Blocking buffer (normal goat serum) at 37°C for 30min; Antibody incubation with (Alpha B Crystallin) Polyclonal Antibody, Unconjugated (SL4651R) at 1:400 overnight at 4°C, followed by operating according to SP Kit(Rabbit) (sp-0023) instructions and DAB staining.



Paraformaldehyde-fixed, paraffin embedded (Rat brain); Antigen retrieval by microwave in sodium citrate buffer (pH6.0) ; Block endogenous peroxidase by 3% hydrogen peroxide for 30 minutes; Blocking buffer (3% BSA) at RT for 30min; Antibody incubation with (Alpha B Crystallin) Polyclonal Antibody, Unconjugated (SL4651R) at 1:400 overnight at 4°C, followed by conjugation to the secondary antibody (labeled with HRP) and DAB staining.