



Rabbit Anti-CRLF2 antibody

SL4652R

Product Name:	CRLF2
Chinese Name:	胸腺基质lymphocyte生成素受体抗体
Alias:	CRL 2; CRL2; CRLF 2; Crlf2; CRLF2_MOUSE; CRLF2Y; Cytokine receptor CRL2 precursor; Cytokine receptor like 2; Cytokine receptor like factor 2; Cytokine receptor like factor 2 precursor; Cytokine receptor-like 2; Cytokine receptor-like factor 2; IL XR; IL-XR; ILXR; Thymic stromal derived lymphopoietin receptor; Thymic stromal lymphopoietin protein receptor; Thymic stromal lymphopoietin receptor; TSLP receptor; TSLPR.
Organism Species:	Rabbit
Clonality:	Polyclonal
React Species:	Mouse,Rat,
Applications:	WB=1:500-2000ELISA=1:500-1000IHC-P=1:400-800IHC-F=1:400-800IF=1:100-500 (Paraffin sections need antigen repair) not yet tested in other applications. optimal dilutions/concentrations should be determined by the end user.
Molecular weight:	36kDa
Cellular localization:	The cell membraneSecretory protein
Form:	Lyophilized or Liquid
Concentration:	1mg/ml
immunogen:	KLH conjugated synthetic peptide derived from mouse CRLF2:251-350/370<Cytoplasmic>
Lsotype:	IgG
Purification:	affinity purified by Protein A
Storage Buffer:	0.01M TBS(pH7.4) with 1% BSA, 0.03% Proclin300 and 50% Glycerol.
Storage:	Store at -20 °C for one year. Avoid repeated freeze/thaw cycles. The lyophilized antibody is stable at room temperature for at least one month and for greater than a year when kept at -20°C. When reconstituted in sterile pH 7.4 0.01M PBS or diluent of antibody the antibody is stable for at least two weeks at 2-4 °C.
PubMed:	PubMed
Product Detail:	Receptor for thymic stromal lymphopoietin (TSLP). Forms a functional complex with

TSLP and IL7R which is capable of stimulating cell proliferation through activation of STAT3 and STAT5. Also activates JAK2 (By similarity). Implicated in the development of the hematopoietic system.

Tissue specificity: Expressed in heart, skeletal muscle, kidney and adult and fetal liver. Primarily expressed in dendrites and monocytes. Weakly expressed in T-cells.

Function:

Receptor for thymic stromal lymphopoietin (TSLP). Forms a functional complex with TSLP and IL7R which is capable of stimulating cell proliferation through activation of STAT3 and STAT5. Also activates JAK2 (By similarity). Implicated in the development of the hematopoietic system.

Subunit:

Heterodimer of CRLF2 and IL7R.

Subcellular Location:

Isoform 1: Cell membrane; Single-pass type I membrane protein.

Isoform 3: Cell membrane; Single-pass type I membrane protein.

Isoform 2: Secreted.

Tissue Specificity:

Expressed in heart, skeletal muscle, kidney and adult and fetal liver. Primarily expressed in dendrites and monocytes. Weakly expressed in T-cells.

Similarity:

Belongs to the type I cytokine receptor family. Type 5 subfamily.

Contains 1 fibronectin type-III domain.

SWISS:

Q8CII9

Gene ID:

57914

Database links:

[Entrez Gene: 64109](#)Human

[Entrez Gene: 57914](#)Mouse

[Entrez Gene: 171499](#)Rat

[Omim: 300357](#)Human

[Omim: 400023](#)Human

[SwissProt: Q9HC73](#)Human

[SwissProt: Q8CII9](#)Mouse

[SwissProt: Q8R4S8](#)Rat

[Unigene: 287729](#)Human

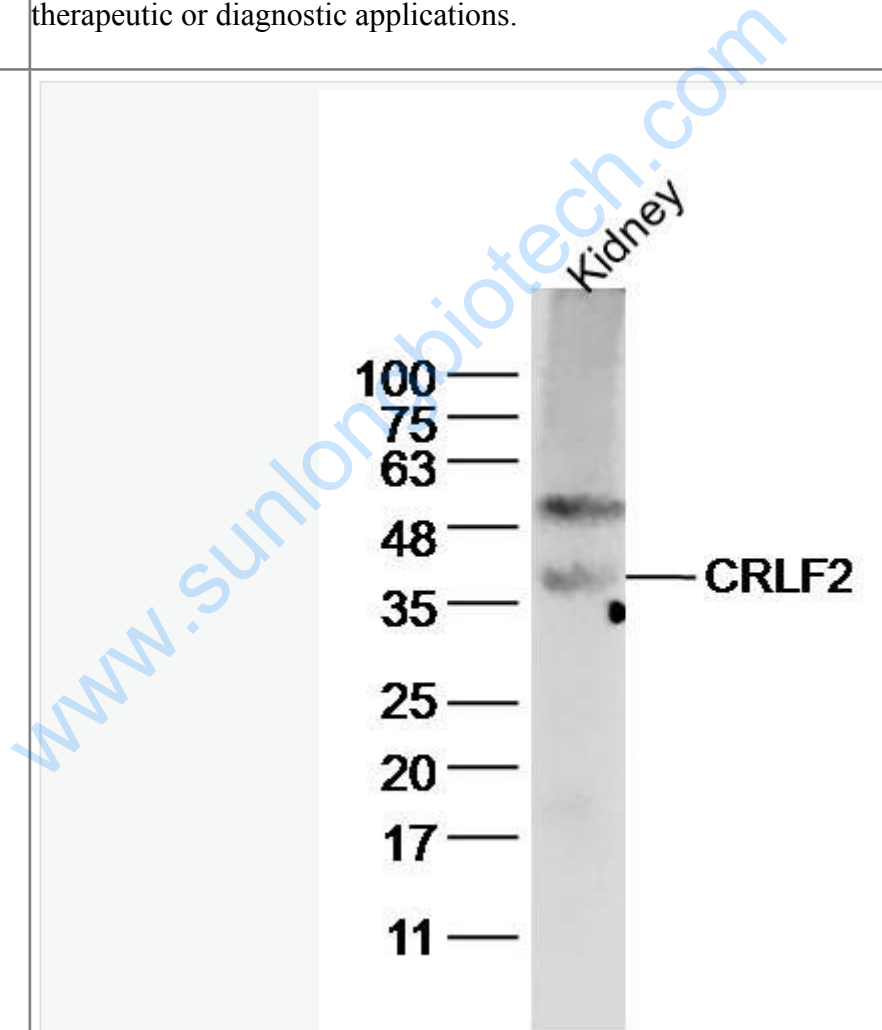
[Unigene: 35771](#)Mouse

[Unigene: 177948](#)Rat

Important Note:

This product as supplied is intended for research use only, not for use in human, therapeutic or diagnostic applications.

Picture:



Sample: kidney(mouse) Lysate at 40 ug

Primary: Anti-CRLF2 (SL4652R) at 1/300 dilution

Secondary: IRDye800CW Goat Anti-Rabbit IgG at 1/20000 dilution

Predicted band size: 36kD

Observed band size: 36 kD

www.sunlongbiotech.com