



## Rabbit Anti-MARK4 antibody

SL4659R

<b>Product Name:</b>	MARK4
<b>Chinese Name:</b>	丝氨酸/苏氨酸蛋白激酶MARK4抗体
<b>Alias:</b>	MARK 4; MARK-4; MARK 4L; MARK L1; MARK4; MARK4 serine / threonine protein kinase; MARK4 serine/threonine protein kinase; MARK4_HUMAN; MARKL 1; MARKL1; MAP / microtubule affinity regulating kinase 4; MAP / microtubule affinity regulating kinase 4L; MAP/microtubule affinity regulating kinase 4; MAP/microtubule affinity regulating kinase like 1; MAP/microtubule affinity-regulating kinase 4; MAP/microtubule affinity-regulating kinase-like 1; Putative protein product of Nbla00650; FLJ90097; KIAA1860; mKIAA1860.
<b>Organism Species:</b>	Rabbit
<b>Clonality:</b>	Polyclonal
<b>React Species:</b>	Human,Mouse,Rat,Dog,Horse,
<b>Applications:</b>	WB=1:500-2000ELISA=1:500-1000IHC-P=1:400-800IHC-F=1:400-800IF=1:100-500 (Paraffin sections need antigen repair) not yet tested in other applications. optimal dilutions/concentrations should be determined by the end user.
<b>Molecular weight:</b>	75kDa
<b>Cellular localization:</b>	cytoplasmic
<b>Form:</b>	Lyophilized or Liquid
<b>Concentration:</b>	1mg/ml
<b>immunogen:</b>	KLH conjugated synthetic peptide derived from human MARK4.:501-600/752
<b>Lsotype:</b>	IgG
<b>Purification:</b>	affinity purified by Protein A
<b>Storage Buffer:</b>	0.01M TBS(pH7.4) with 1% BSA, 0.03% Proclin300 and 50% Glycerol.
<b>Storage:</b>	Store at -20 °C for one year. Avoid repeated freeze/thaw cycles. The lyophilized antibody is stable at room temperature for at least one month and for greater than a year when kept at -20°C. When reconstituted in sterile pH 7.4 0.01M PBS or diluent of antibody the antibody is stable for at least two weeks at 2-4 °C.
<b>PubMed:</b>	<a href="#">PubMed</a>
<b>Product Detail:</b>	This gene encodes a member of the microtubule affinity-regulating kinase family. These

protein kinases phosphorylate microtubule-associated proteins and regulate the transition between stable and dynamic microtubules. The encoded protein is associated with the centrosome throughout mitosis and may be involved in cell cycle control. Expression of this gene is a potential marker for cancer, and the encoded protein may also play a role in Alzheimer's disease. Pseudogenes of this gene are located on both the short and long arm of chromosome 3. Alternatively spliced transcript variants encoding multiple isoforms have been observed for this gene. [provided by RefSeq, Dec 2010].

**SWISS:**  
Q96L34

**Gene ID:**  
57787

**Database links:**

[Entrez Gene: 57787](#)Human

[Entrez Gene: 232944](#)Mouse

[Entrez Gene: 680407](#)Rat

[Omim: 606495](#)Human

[SwissProt: Q96L34](#)Human

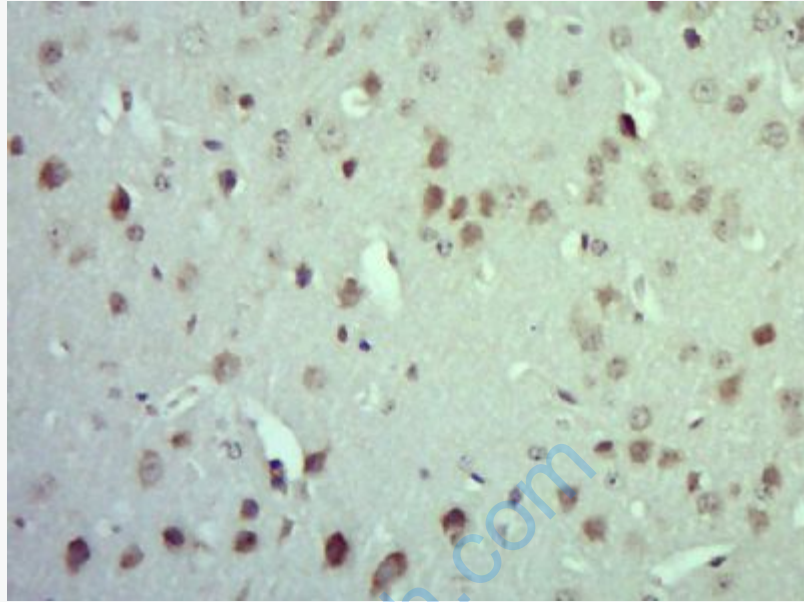
[SwissProt: Q8CIP4](#)Mouse

[Unigene: 34314](#)Human

[Unigene: 260504](#)Mouse

**Important Note:**

This product as supplied is intended for research use only, not for use in human, therapeutic or diagnostic applications.



**Picture:**

Paraformaldehyde-fixed, paraffin embedded (Mouse brain); Antigen retrieval by boiling in sodium citrate buffer (pH6.0) for 15min; Block endogenous peroxidase by 3% hydrogen peroxide for 20 minutes; Blocking buffer (normal goat serum) at 37°C for 30min; Antibody incubation with (MARK4) Polyclonal Antibody, Unconjugated (SL4659R) at 1:400 overnight at 4°C, followed by operating according to SP Kit(Rabbit) (sp-0023) instructions and DAB staining.