



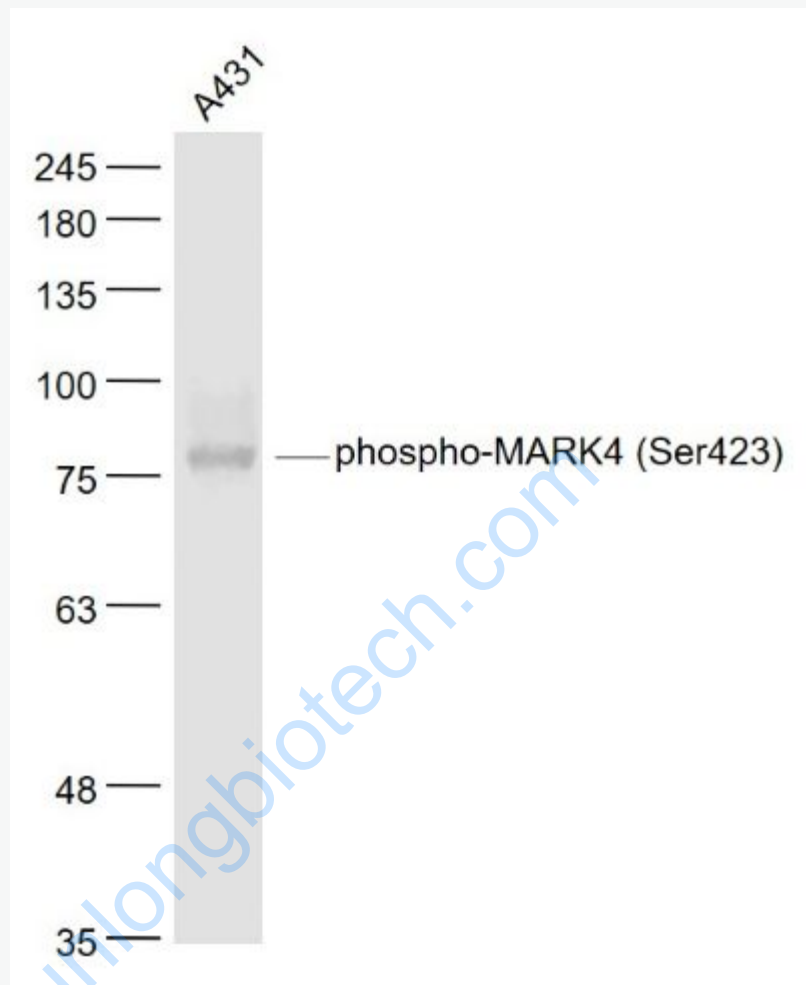
Rabbit Anti-phospho-MARK4 (Ser423) antibody

SL4660R

Product Name:	phospho-MARK4 (Ser423)
Chinese Name:	磷酸化丝氨酸/苏氨酸蛋白激酶MARK4抗体
Alias:	MARK4(phospho Ser423); MARK4(phospho S423); MARK 4; MARK-4; MARK 4L; MARK L1; MARK4; MARK4 serine / threonine protein kinase; MARK4 serine/threonine protein kinase; MARK4_HUMAN; MARKL 1; MARKL1; MAP / microtubule affinity regulating kinase 4; MAP / microtubule affinity regulating kinase 4L; MAP/microtubule affinity regulating kinase 4; MAP/microtubule affinity regulating kinase like 1; MAP/microtubule affinity-regulating kinase 4; MAP/microtubule affinity-regulating kinase-like 1; Putative protein product of Nbla00650; FLJ90097; KIAA1860; mKIAA1860.
Organism Species:	Rabbit
Clonality:	Polyclonal
React Species:	Human, Mouse, Rat, Dog, Cow, Horse,
Applications:	WB=1:500-2000ELISA=1:500-1000IHC-P=1:400-800IHC-F=1:400-800IF=1:100-500 (Paraffin sections need antigen repair) not yet tested in other applications. optimal dilutions/concentrations should be determined by the end user.
Molecular weight:	75kDa
Cellular localization:	cytoplasmic
Form:	Lyophilized or Liquid
Concentration:	1mg/ml
immunogen:	KLH conjugated synthesised phosphopeptide derived from human MARK4 around the phosphorylation site of Ser423.:RH(p-S)DF
Lsotype:	IgG
Purification:	affinity purified by Protein A
Storage Buffer:	0.01M TBS(pH7.4) with 1% BSA, 0.03% Proclin300 and 50% Glycerol.
Storage:	Store at -20 °C for one year. Avoid repeated freeze/thaw cycles. The lyophilized antibody is stable at room temperature for at least one month and for greater than a year when kept at -20°C. When reconstituted in sterile pH 7.4 0.01M PBS or diluent of

	antibody the antibody is stable for at least two weeks at 2-4 °C.
PubMed:	PubMed
Product Detail:	<p>This gene encodes a member of the microtubule affinity-regulating kinase family. These protein kinases phosphorylate microtubule-associated proteins and regulate the transition between stable and dynamic microtubules. The encoded protein is associated with the centrosome throughout mitosis and may be involved in cell cycle control. Expression of this gene is a potential marker for cancer, and the encoded protein may also play a role in Alzheimer's disease. Pseudogenes of this gene are located on both the short and long arm of chromosome 3. Alternatively spliced transcript variants encoding multiple isoforms have been observed for this gene. [provided by RefSeq, Dec 2010].</p> <p>SWISS: Q96L34</p> <p>Gene ID: 57787</p> <p>Database links:</p> <p>Entrez Gene: 57787Human Entrez Gene: 232944Mouse Entrez Gene: 680407Rat Omim: 606495Human SwissProt: Q96L34Human SwissProt: Q8CIP4Mouse Unigene: 34314Human Unigene: 260504Mouse</p> <p>Important Note: This product as supplied is intended for research use only, not for use in human, therapeutic or diagnostic applications.</p>

Picture:



Sample:

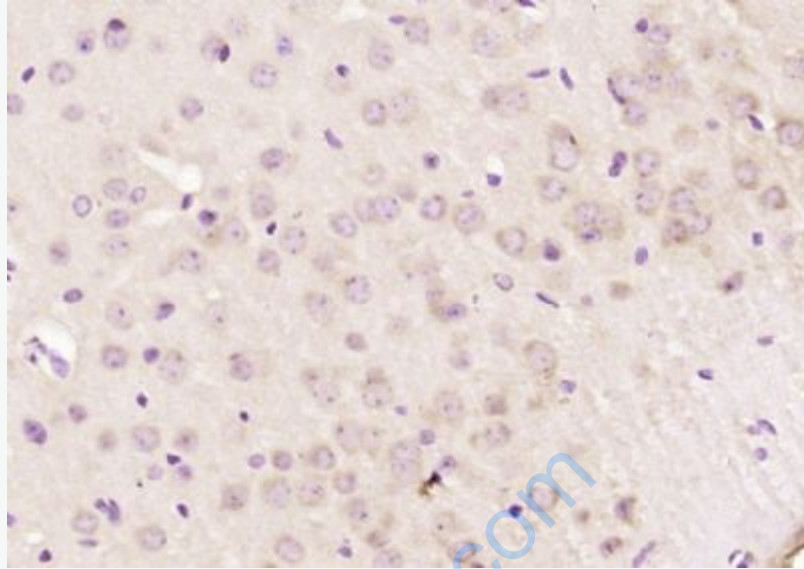
A431(Human) Cell Lysate at 30 ug

Primary: Anti- phospho-MARK4 (Ser423) (SL4660R) at 1/1000 dilution

Secondary: IRDye800CW Goat Anti-Rabbit IgG at 1/20000 dilution

Predicted band size: 75 kD

Observed band size: 77 kD



Paraformaldehyde-fixed, paraffin embedded (mouse brain); Antigen retrieval by boiling in sodium citrate buffer (pH6.0) for 15min; Block endogenous peroxidase by 3% hydrogen peroxide for 20 minutes; Blocking buffer (normal goat serum) at 37°C for 30min; Antibody incubation with (phospho-MARK4 (Ser423)) Polyclonal Antibody, Unconjugated (SL4660R) at 1:200 overnight at 4°C, followed by operating according to SP Kit(Rabbit) (sp-0023) instructions and DAB staining.