



## Rabbit Anti-CD161c antibody

SL4682R

<b>Product Name:</b>	CD161c
<b>Chinese Name:</b>	CD161c抗体
<b>Alias:</b>	CD161 antigen like family member C; CD161 antigen-like family member C; Killer cell lectin like receptor subfamily A member 1C; Killer cell lectin like receptor subfamily B member 1C; Klrblc; Ly55c; Lymphocyte antigen 55c; Ly59; Lymphocyte antigen 59; Natural killer cell surface protein P1 40; Natural killer cell surface protein P1-40; Ly-55c; NK1.1 alloantigen; NKR P1.9; NKR P1C; NKRP1 40; NKRP1; NKRP1.9; Nkrp1-c; NKRP1C; NK-1.1; Nk-1.2; NK-RP1; NK1.1; NKR-P1; Nkrp1c; NKR-P1.9; NKR-P1C; KLRB1 MOUSE.
<b>Organism Species:</b>	Rabbit
<b>Clonality:</b>	Polyclonal
<b>React Species:</b>	Human,Mouse,Rat,
<b>Applications:</b>	WB=1:500-2000ELISA=1:500-1000 not yet tested in other applications. optimal dilutions/concentrations should be determined by the end user.
<b>Molecular weight:</b>	25kDa
<b>Cellular localization:</b>	The cell membrane
<b>Form:</b>	Lyophilized or Liquid
<b>Concentration:</b>	1mg/ml
<b>immunogen:</b>	KLH conjugated synthetic peptide derived from mouse CD161/NK1.1:101-200/223<Extracellular>
<b>Lsotype:</b>	IgG
<b>Purification:</b>	affinity purified by Protein A
<b>Storage Buffer:</b>	0.01M TBS(pH7.4) with 1% BSA, 0.03% Proclin300 and 50% Glycerol.
<b>Storage:</b>	Store at -20 °C for one year. Avoid repeated freeze/thaw cycles. The lyophilized antibody is stable at room temperature for at least one month and for greater than a year when kept at -20°C. When reconstituted in sterile pH 7.4 0.01M PBS or diluent of antibody the antibody is stable for at least two weeks at 2-4 °C.
<b>PubMed:</b>	<a href="#">PubMed</a>
<b>Product Detail:</b>	NK1.1, a member of the NKRPI family of cell surface receptors, is a type II integral

membrane protein with a C type lectin domain. It is expressed as a disulfide linked homodimer on all NK cells, as well as subsets of thymocytes and peripheral T lymphocytes in selected strains of mice (e.g., C57/BL6, FVB/N, NZB; but not A, AKR, BALB/c, CBA/J, C3H, C57BR, C58, DBA/1, DBA/2, SJL, 129). NK1.1 mediates cellular activation and differentiation, and is thought to have a particular role in generating Th2 cells.

**Subunit:**

Homodimer; disulfide-linked. Interacts with acid phingomyelinase/SMPD1.

**Subcellular Location:**

Membrane; Single-pass type II membrane protein (Potential).

**Tissue Specificity:**

Expressed in a subset of NK cells predominantly in intestinal epithelium and liver. Detected in peripheral blood T-cells and preferentially in adult T-cells with a memory antigenic phenotype.

**Similarity:**

Contains 1 C-type lectin domain.

**SWISS:**

P27814

**Gene ID:**

100043861

**Database links:**

[Entrez Gene: 3820](#)Human

[Entrez Gene: 100043861](#)Mouse

[Entrez Gene: 362443](#)Rat

[Omim: 602890](#)Human

[SwissProt: Q12918](#)Human

[SwissProt: Q0ZUP1](#)Mouse

[SwissProt: Q0ZUP0](#)Rat

[Unigene: 169824](#)Human

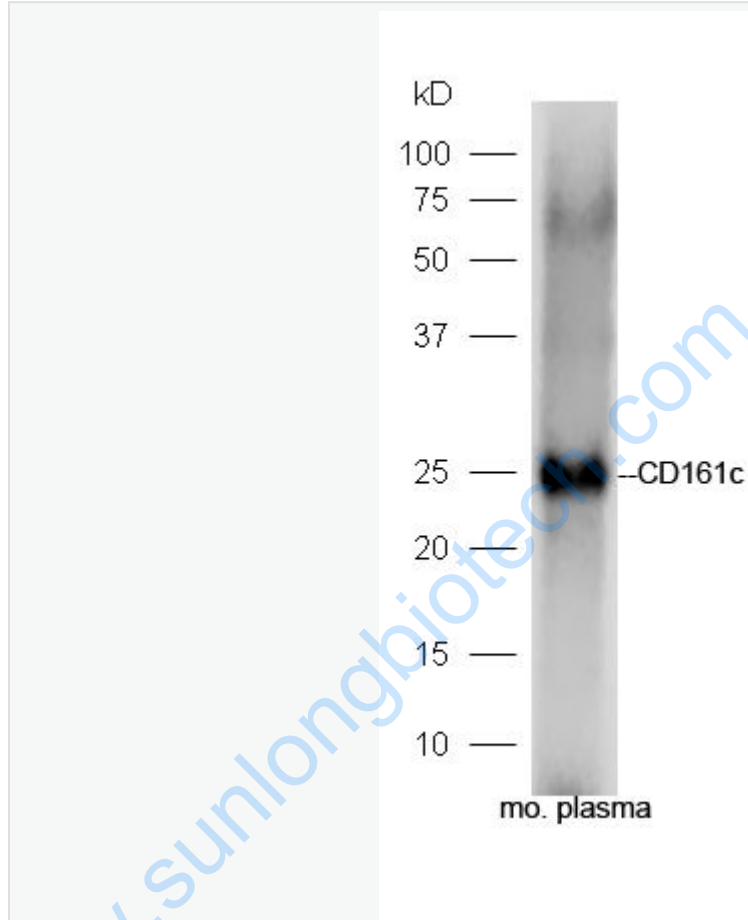
[Unigene: 66911](#)Mouse

[Unigene: 198693](#)Rat

**Important Note:**

This product as supplied is intended for research use only, not for use in human, therapeutic or diagnostic applications.

**Picture:**



Sample: Plasma (Mouse) Lysate at 40 ug

Primary: Anti-CD161c (SL4682R) at 1/300 dilution

Secondary: HRP conjugated Goat-Anti-rabbit IgG (SL4682R) at 1/5000 dilution

Predicted band size: 25 kD

Observed band size: 25 kD