



## Rabbit Anti-AMH antibody

SL4687R

<b>Product Name:</b>	AMH
<b>Chinese Name:</b>	Muellerian 缪勒管激素抑制因子抗体
<b>Alias:</b>	MIS_HUMAN; Anti muellerian hormone; MIF; MIS; Muellerian inhibiting factor; Mullerian inhibiting substance; Muellerian-inhibiting factor; Anti-Muellerian hormone; AMH; Muellerian-inhibiting substance.
<b>Organism Species:</b>	Rabbit
<b>Clonality:</b>	Polyclonal
<b>React Species:</b>	Human,Mouse,Rat,Dog,Pig,Cow,Horse,
<b>Applications:</b>	WB=1:500-2000ELISA=1:500-1000 not yet tested in other applications. optimal dilutions/concentrations should be determined by the end user.
<b>Molecular weight:</b>	57kDa
<b>Cellular localization:</b>	Secretory protein
<b>Form:</b>	Lyophilized or Liquid
<b>Concentration:</b>	1mg/ml
<b>immunogen:</b>	KLH conjugated synthetic peptide derived from human AMH:501-560/560
<b>Lsotype:</b>	IgG
<b>Purification:</b>	affinity purified by Protein A
<b>Storage Buffer:</b>	0.01M TBS(pH7.4) with 1% BSA, 0.03% Proclin300 and 50% Glycerol.
<b>Storage:</b>	Store at -20 °C for one year. Avoid repeated freeze/thaw cycles. The lyophilized antibody is stable at room temperature for at least one month and for greater than a year when kept at -20°C. When reconstituted in sterile pH 7.4 0.01M PBS or diluent of antibody the antibody is stable for at least two weeks at 2-4 °C.
<b>PubMed:</b>	<a href="#">PubMed</a>
<b>Product Detail:</b>	Anti-Mullerian hormone is a member of the transforming growth factor-beta gene family which mediates male sexual differentiation. Anti-Mullerian hormone causes the regression of Mullerian ducts which would otherwise differentiate into the uterus and fallopian tubes. Some mutations in the anti-Mullerian hormone result in persistent Mullerian duct syndrome. [provided by RefSeq, Jul 2008].

**Function:**

This glycoprotein, produced by the Sertoli cells of the testis, causes regression of the Mullerian duct. It is also able to inhibit the growth of tumors derived from tissues of Mullerian duct origin.

**Subunit:**

Homodimer; disulfide-linked.

**Subcellular Location:**

Secreted.

**DISEASE:**

Persistent Mullerian duct syndrome 1 (PMDS1) [MIM:261550]: A form of male pseudohermaphroditism characterized by a failure of Mullerian duct regression in otherwise normal males. Note=The disease is caused by mutations affecting the gene represented in this entry.

**Similarity:**

Belongs to the TGF-beta family.

**SWISS:**

P03971

**Gene ID:**

268

**Database links:**

[Entrez Gene: 268](#)Human

[Entrez Gene: 11705](#)Mouse

[Entrez Gene: 25378](#)Rat

[Omir: 600957](#)Human

[SwissProt: P03971](#)Human

[SwissProt: P27106](#)Mouse

[SwissProt: P49000](#)Rat

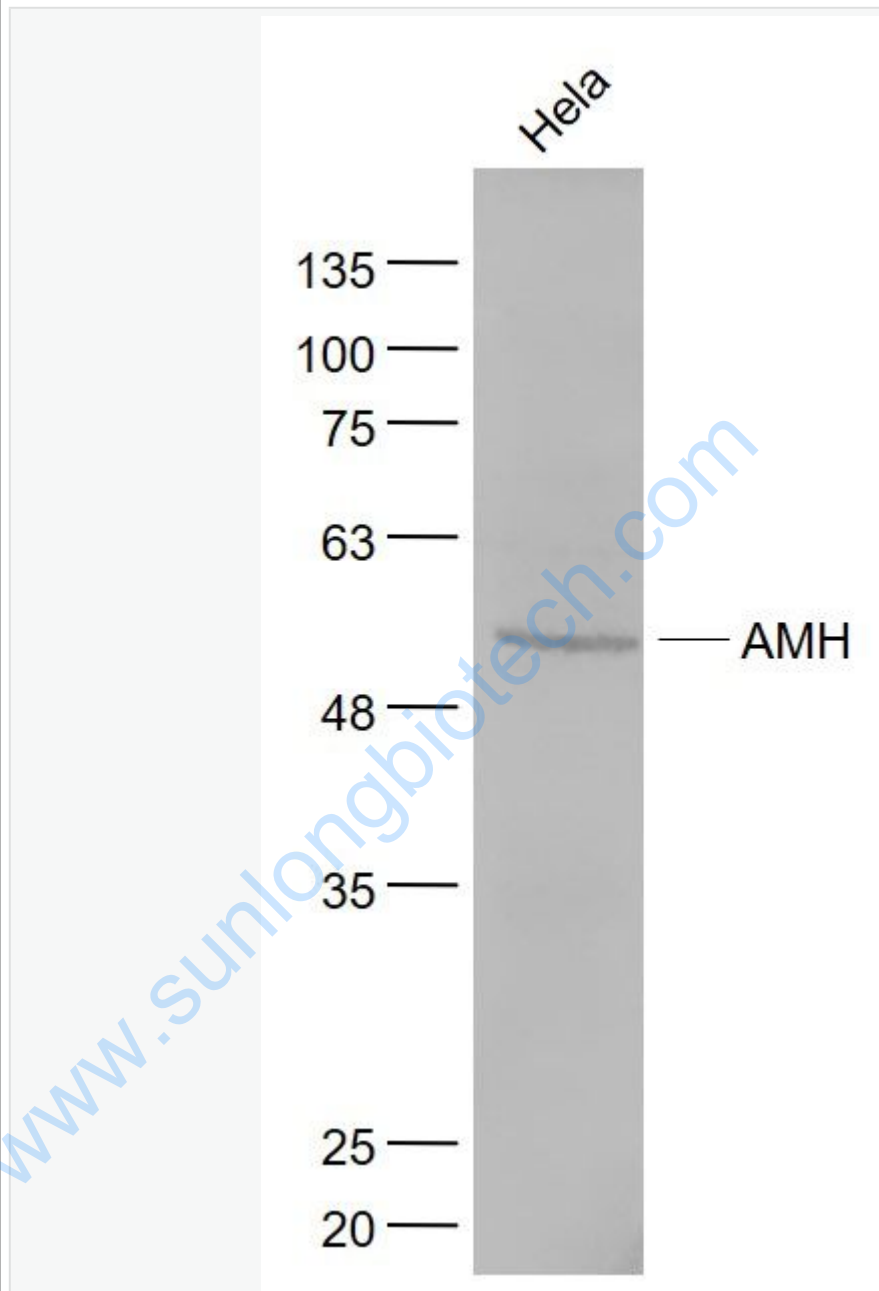
[Unigene: 112432](#)Human

[Unigene: 19121](#)Rat

**Important Note:**

This product as supplied is intended for research use only, not for use in human, therapeutic or diagnostic applications.

Picture:



Sample:

HeLa(Human) Cell Lysate at 30 ug

Primary: Anti-AMH (SL4687R) at 1/1000 dilution

Secondary: IRDye800CW Goat Anti-Rabbit IgG at 1/20000 dilution

	<p>Predicted band size: 57 kD</p>
--	-----------------------------------

	<p>Observed band size: 57 kD</p>
--	----------------------------------

[www.sunlongbiotech.com](http://www.sunlongbiotech.com)