



Rabbit Anti-AFP antibody

SL4708R

Product Name:	AFP
Chinese Name:	甲胎蛋白抗体
Alias:	Alpha Fetoprotein; Alpha-fetoprotein; AFP; alpha 1 fetoprotein; Alpha-1-fetoprotein; Alpha-fetoglobulin; alpha fetoglobulin; alpha Fetoprotein; Alpha fetoprotein precursor; FETA; HPAFP; FETA_HUMAN.
Organism Species:	Rabbit
Clonality:	Polyclonal
React Species:	Human,Monkey,
Applications:	WB=1:500-2000ELISA=1:500-1000IHC-P=1:400-800IHC-F=1:400-800ICC=1:100-500IF=1:100-500 (Paraffin sections need antigen repair) not yet tested in other applications. optimal dilutions/concentrations should be determined by the end user.
Molecular weight:	65kDa
Cellular localization:	Secretory protein
Form:	Lyophilized or Liquid
Concentration:	1mg/ml
immunogen:	KLH conjugated synthetic peptide derived from human AFP:521-609/609
Lsotype:	IgG
Purification:	affinity purified by Protein A
Storage Buffer:	0.01M TBS(pH7.4) with 1% BSA, 0.03% Proclin300 and 50% Glycerol.
Storage:	Store at -20 °C for one year. Avoid repeated freeze/thaw cycles. The lyophilized antibody is stable at room temperature for at least one month and for greater than a year when kept at -20°C. When reconstituted in sterile pH 7.4 0.01M PBS or diluent of antibody the antibody is stable for at least two weeks at 2-4 °C.
PubMed:	PubMed
Product Detail:	Alpha 1 Fetoprotein is a major plasma protein produced by the yolk sac and the liver during fetal life. Alpha fetoprotein expression in adults is often associated with hepatoma or teratoma. However, hereditary persistence of alpha-fetoprotein may also be found in individuals with no obvious pathology. The protein is thought to be the fetal counterpart of serum albumin, and the alpha fetoprotein and albumin genes are present

in tandem in the same transcriptional orientation on chromosome 4. Alpha fetoprotein is found in monomeric as well as dimeric and trimeric forms, and binds copper, nickel, fatty acids and bilirubin. The level of alpha fetoprotein in amniotic fluid is used to measure renal loss of protein to screen for spina bifida and anencephaly. Expression has been documented in human adrenal, liver, ovary, testis, and pancreas. ESTs have been isolated from normal human brain, liver/spleen, embryo and uterus tissue libraries.

Function:

Binds copper, nickel, and fatty acids as well as, and bilirubin less well than, serum albumin. Only a small percentage (less than 2%) of the human AFP shows estrogen-binding properties.

Subunit:

Dimeric and trimeric forms have been found in addition to the monomeric form.

Subcellular Location:

Secreted.

Tissue Specificity:

Plasma. Synthesized by the fetal liver and yolk sac.

Post-translational modifications:

Independent studies suggest heterogeneity of the N-terminal sequence of the mature protein and of the cleavage site of the signal sequence.
Sulfated.

Similarity:

Belongs to the ALB/AFP/VDB family.
Contains 3 albumin domains.

SWISS:

P02771

Gene ID:

174

Database links:

[Entrez Gene: 174](#)Human

[Omim: 104150](#)Human

[SwissProt: P02771](#)Human

[Unigene: 518808](#)Human

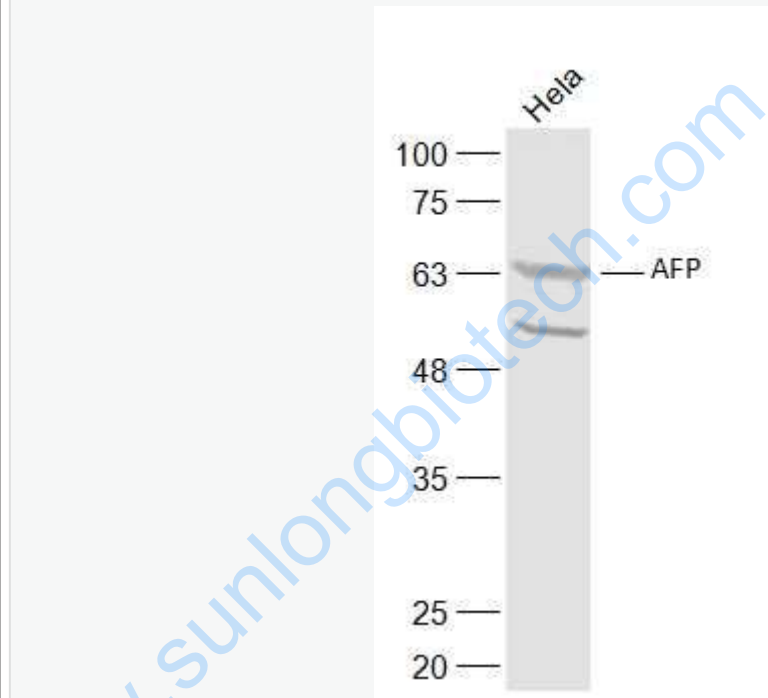
Important Note:

This product as supplied is intended for research use only, not for use in human, therapeutic or diagnostic applications.

AFP是由胚胎卵黄囊细胞, 胚胎肝细胞和胎儿肠道细胞合成的一种glycoprotein。主要用于原发性或转移性肝细胞癌、肝样胃癌和性腺或性腺外某些生殖细胞Tumour(如内胚瘤)的诊断和鉴别诊断。

AFP敏感度较低, 特异性强, 大约60%左右的肝细胞肝癌阳性, 在低分化Tumour中常呈阳性表达。

Picture:



Sample:

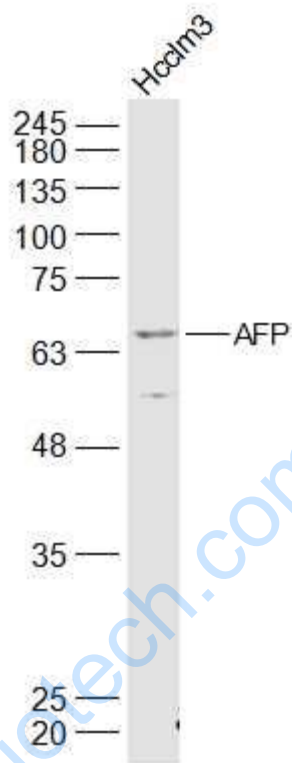
HeLa(Human) Cell Lysate at 30 ug

Primary: Anti-AFP (SL4708R) at 1/500 dilution

Secondary: IRDye800CW Goat Anti-Rabbit IgG at 1/20000 dilution

Predicted band size: 65 kD

Observed band size: 65 kD



Sample:

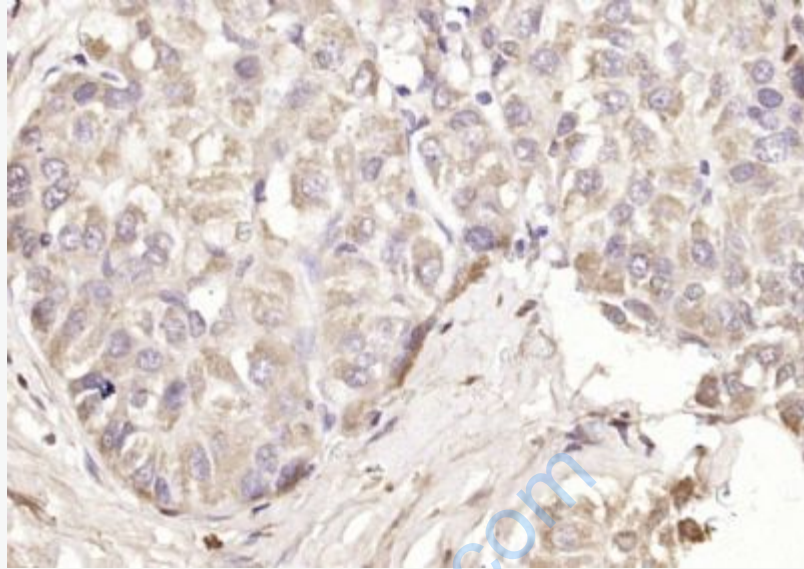
Hcclm3(Human) Cell Lysate at 30 ug

Primary: Anti-AFP (SL4708R) at 1/500 dilution

Secondary: IRDye800CW Goat Anti-Rabbit IgG at 1/20000 dilution

Predicted band size: 65 kD

Observed band size: 65 kD



Paraformaldehyde-fixed, paraffin embedded (human liver carcinoma); Antigen retrieval by boiling in sodium citrate buffer (pH6.0) for 15min; Block endogenous peroxidase by 3% hydrogen peroxide for 20 minutes; Blocking buffer (normal goat serum) at 37°C for 30min; Antibody incubation with (AFP) Polyclonal Antibody, Unconjugated (SL4708R) at 1:200 overnight at 4°C, followed by operating according to SP Kit(Rabbit) (sp-0023) instructions and DAB staining.