



Rabbit Anti-CD19 antibody

SL4755R

Product Name:	CD19
Chinese Name:	CD19抗体
Alias:	Antibody deficiency due to defect in CD19, included; AW495831; B lymphocyte antigen CD19; B lymphocyte surface antigen B4; B4; CD 19; CD19 antigen; CD19 molecule; Cd19 protein; Differentiation Antigen CD19; Leu 12; Leu12; Lymphocyte Surface Antigen; MGC109570; MGC12802; T-cell surface antigen Leu-12.
Organism Species:	Rabbit
Clonality:	Polyclonal
React Species:	Human,Mouse,Rat,Pig,Guinea Pig,
Applications:	WB=1:500-2000ELISA=1:500-1000Flow-Cyt=1 μ g /Test not yet tested in other applications. optimal dilutions/concentrations should be determined by the end user.
Molecular weight:	59kDa
Cellular localization:	The cell membrane
Form:	Lyophilized or Liquid
Concentration:	1mg/ml
immunogen:	KLH conjugated synthetic peptide derived from human CD19:151-250/556<Extracellular>
Lsotype:	IgG
Purification:	affinity purified by Protein A
Storage Buffer:	0.01M TBS(pH7.4) with 1% BSA, 0.03% Proclin300 and 50% Glycerol.
Storage:	Store at -20 °C for one year. Avoid repeated freeze/thaw cycles. The lyophilized antibody is stable at room temperature for at least one month and for greater than a year when kept at -20°C. When reconstituted in sterile pH 7.4 0.01M PBS or diluent of antibody the antibody is stable for at least two weeks at 2-4 °C.
PubMed:	PubMed
Product Detail:	CD19 is a transmembrane glycoprotein that is delectively expressed on the cell surface of B-lymphocytes,where it activates intracellular signaling cascades involving both Ras and phosphatidylinositol 3-kinase pathways.Lymphocytes proliferate and differentiate in response to various concentrations of different antigens. The ability of the B cell to

respond in a specific, yet sensitive manner to the various antigens is achieved with the use of low-affinity antigen receptors. This gene encodes a cell surface molecule which assembles with the antigen receptor of B lymphocytes in order to decrease the threshold for antigen receptor-dependent stimulation.

Function:

Assembles with the antigen receptor of B-lymphocytes in order to decrease the threshold for antigen receptor-dependent stimulation.

Subunit:

Forms a complex with CD21, CD81 and CD225 in the membrane of mature B-cells. Interacts with VAV. Interacts with GRB2 and SOS when phosphorylated on Tyr-348 and/or Tyr-378. Interacts with PLCG2 when phosphorylated on Tyr-409. Interacts with LYN.

Subcellular Location:

Membrane; Single-pass type I membrane protein.

Post-translational modifications:

Phosphorylated on serine and threonine upon DNA damage, probably by ATM or ATR. Phosphorylated on tyrosine following B-cell activation. Phosphorylated on tyrosine residues by LYN.

DISEASE:

Defects in CD19 are the cause of immunodeficiency common variable type 3 (CVID3) [MIM:613493]; also called antibody deficiency due to CD19 defect. CVID3 is a primary immunodeficiency characterized by antibody deficiency, hypogammaglobulinemia, recurrent bacterial infections and an inability to mount an antibody response to antigen. The defect results from a failure of B-cell differentiation and impaired secretion of immunoglobulins; the numbers of circulating B-cells is usually in the normal range, but can be low.

Similarity:

Contains 2 Ig-like C2-type (immunoglobulin-like) domains.

SWISS:

P15391

Gene ID:

930

Database links:

[Entrez Gene: 930](#)Human

[Entrez Gene: 12478](#)Mouse

[Omid: 107265](#)Human

[SwissProt: P15391](#)Human

[SwissProt: P25918](#)Mouse

[Unigene: 652262](#)Human

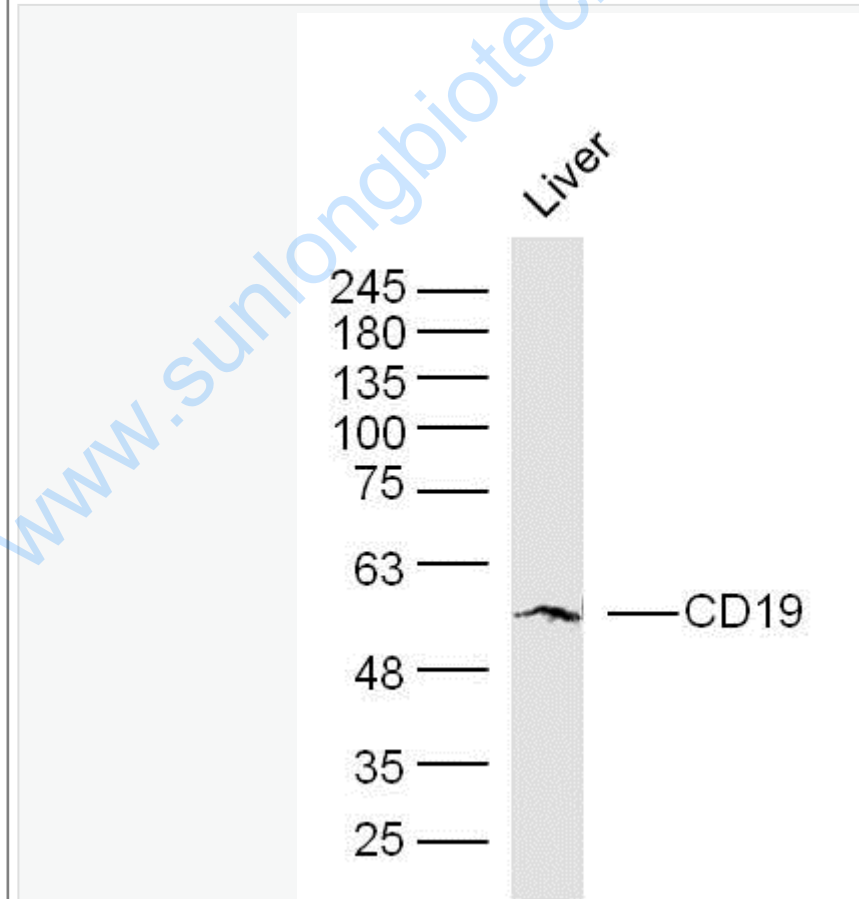
[Unigene: 4360](#)Mouse

Important Note:

This product as supplied is intended for research use only, not for use in human, therapeutic or diagnostic applications.

CD19是一种质膜蛋白质，参与信号传导作用。表达与前B细胞和成熟的B细胞的膜表面，与B细胞的活化调节和发育调节相关，在T细胞和正常粒细胞上无表达。此抗体可以特异性识别CD19，主要用于标记正常B细胞及Tumour性B细胞。

Picture:



Sample:

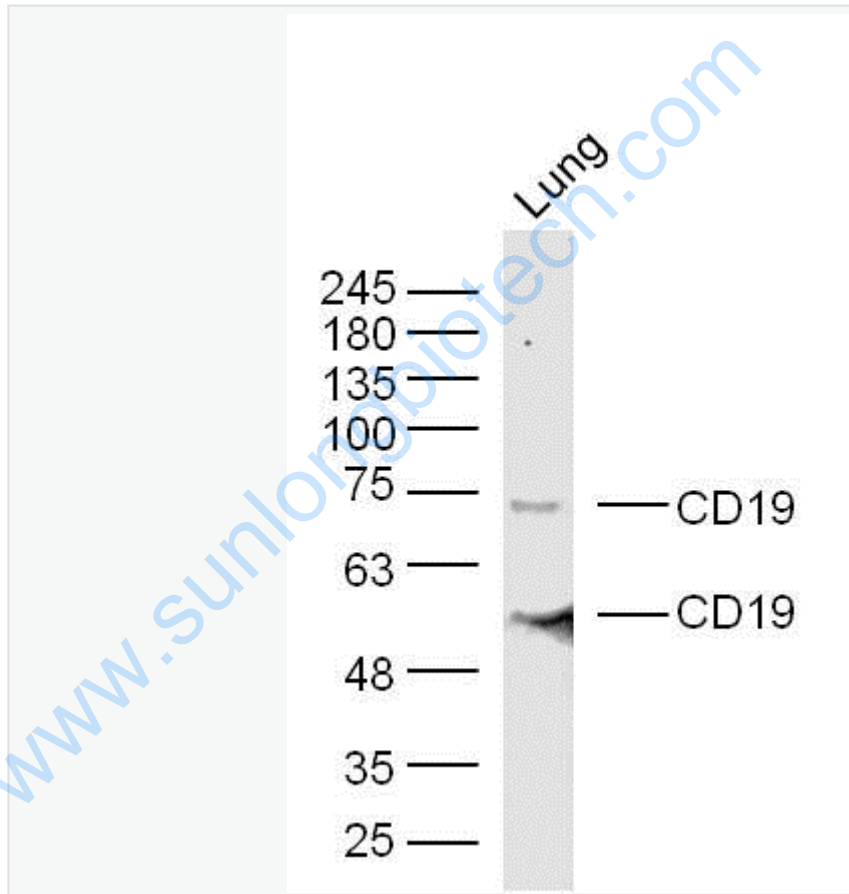
Liver(Mouse) Lysate at 40 ug

Primary: Anti-CD19(SL4755R) at 1/300 dilution

Secondary: IRDye800CW Goat Anti-Rabbit IgG at 1/20000 dilution

Predicted band size: 59 kD

Observed band size: 59 kD



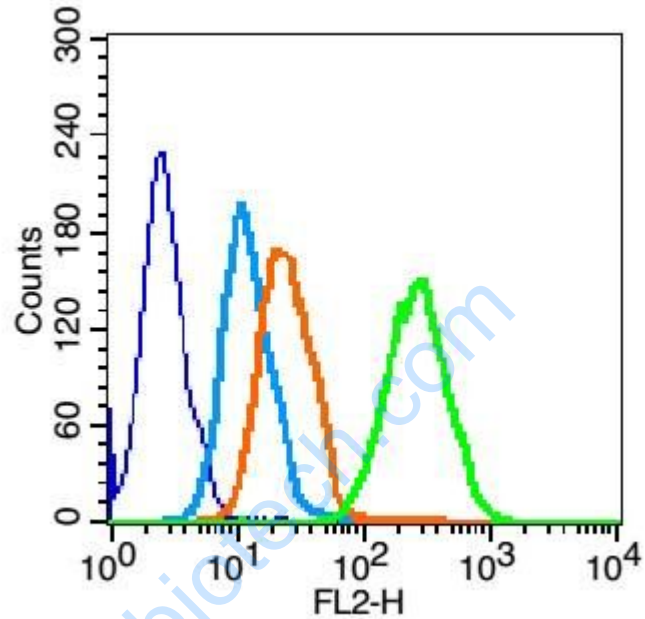
Sample: lung (mouse) Lysate at 40 ug

Primary: Anti- CD19(SL4755R)at 1/300 dilution

Secondary: IRDye800CW Goat Anti-Rabbit IgG at 1/20000 dilution

Predicted band size: 59kD

Observed band size: 59/69 kD



Blank control (blue line): HL60 cells (fixed with 70% methanol (Overnight at 4°C)).

Primary Antibody (green line): Rabbit Anti-CD19 antibody (SL4755R), Dilution: 0.2 μg / 10⁶ cells;

Isotype Control Antibody (orange line): Rabbit IgG .

Secondary Antibody (white blue line): Goat anti-rabbit IgG-PE, Dilution: 1 μg / test.