



Rabbit Anti-CA153 antibody

SL4763R

Product Name:	CA153
Chinese Name:	粘蛋白-1抗体
Alias:	Breast carcinoma associated antigen DF3; Breast carcinoma associated antigen DF3; Breast carcinoma-associated antigen DF3; CA 15 3; CA 15-3; CA15 3; CA15 3 antigen; CA15.3; Cancer antigen 15-3; Carcinoma associated mucin; Carcinoma associated mucin; Carcinoma-associated mucin; CD 227; CD227; CD227; CD227 antigen; DF3 antigen; DF3 antigen; EMA; EMA; Episialin; Episialin; Epithelial membrane antigen; Epithelial membrane antigen; Epithelial mucin tandem repeat sequence; H23 antigen; H23 antigen; H23AG; H23AG; HGNC:7508; KL 6; KL-6; KL6; Krebs von den Lungen-6; MAM 6; MAM6; MUC 1; MUC 1; MUC-1; MUC-1/SEC; MUC-1/X; MUC1; MUC1-alpha; MUC1-beta; MUC1-CT; MUC1-NT; MUC1/ZD; MUC1_HUMAN; Mucin 1; Mucin 1 precursor; Mucin 1 transmembrane; Mucin-1 subunit beta; Mucin1; Mucin1; Peanut reactive urinary mucin; Peanut reactive urinary mucin; Peanut-reactive urinary mucin; PEM; PEMT; PEMT; Polymorphic epithelial mucin; Polymorphic epithelial mucin; PUM; PUM; Tumor associated epithelial membrane antigen; Tumor associated epithelial membrane antigen; Tumor associated epithelial mucin; Tumor associated mucin; Tumor associated mucin; Tumor-associated epithelial membrane antigen; Tumor-associated mucin.
Organism Species:	Rabbit
Clonality:	Polyclonal
React Species:	Human,
Applications:	WB=1:500-2000ELISA=1:500-1000Flow-Cyt=0.2µg /Test not yet tested in other applications. optimal dilutions/concentrations should be determined by the end user.
Molecular weight:	138kDa
Cellular localization:	The nucleuscytoplasmicThe cell membraneSecretory protein
Form:	Lyophilized or Liquid
Concentration:	1mg/ml
immunogen:	KLH conjugated synthetic peptide derived from human CA153/EMA/MUC1:941-1040/1255<Extracellular>

Lsotype:	IgG
Purification:	affinity purified by Protein A
Storage Buffer:	0.01M TBS(pH7.4) with 1% BSA, 0.03% Proclin300 and 50% Glycerol.
Storage:	Store at -20 °C for one year. Avoid repeated freeze/thaw cycles. The lyophilized antibody is stable at room temperature for at least one month and for greater than a year when kept at -20°C. When reconstituted in sterile pH 7.4 0.01M PBS or diluent of antibody the antibody is stable for at least two weeks at 2-4 °C.
PubMed:	PubMed
Product Detail:	<p>MUC1 is a large cell surface mucin glycoprotein expressed by most glandular and ductal epithelial cells and some hematopoietic cell lineages. It is expressed on most secretory epithelium, including mammary gland and some hematopoietic cells. It is expressed abundantly in lactating mammary glands and overexpressed abundantly in >90% breast carcinomas and metastases. Transgenic MUC1 has been shown to associate with all four cebB receptors and localize with erbB1 (EGFR) in lactating glands. The MUC1 gene contains seven exons and produces several different alternatively spliced variants. The major expressed form of MUC1 uses all seven exons and is a type 1 transmembrane protein with a large extracellular tandem repeat domain. The tandem repeat domain is highly O glycosylated and alterations in glycosylation have been shown in epithelial cancer cells.</p> <p>Subunit: Contains 1 SEA domain.</p> <p>Subcellular Location: Secreted; Cell membrane. Cytoplasm. Nucleus. On EGF and PDGFRB stimulation, transported to the nucleus through interaction with CTNNB1, a process which is stimulated by phosphorylation. On HRG stimulation, colocalizes with JUP/gamma-catenin at the nucleus and Apical cell membrane. Exclusively located in the apical domain of the plasma membrane of highly polarized epithelial cells. After endocytosis, internalized and recycled to the cell membrane. Located to microvilli and to the tips of long filopodial protusions.</p> <p>Tissue Specificity: Expressed on the apical surface of epithelial cells, especially of airway passages, breast and uterus. Also expressed in activated and unactivated T-cells. Overexpressed in epithelial tumors, such as breast or ovarian cancer and also in non-epithelial tumor cells. Isoform 7 is expressed in tumor cells only.</p> <p>SWISS: P15941</p> <p>Gene ID: 4582</p> <p>Database links:</p>

[Entrez Gene: 4582](#) Human

[Entrez Gene: 17829](#) Mouse

[Omim: 158340](#) Human

[SwissProt: P15941](#) Human

[SwissProt: Q02496](#) Mouse

[Unigene: 89603](#) Human

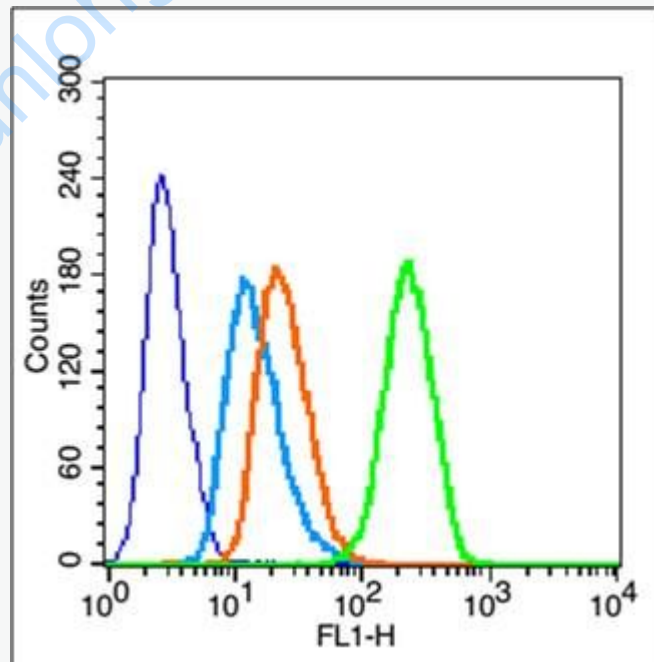
[Unigene: 16193](#) Mouse

Important Note:

This product as supplied is intended for research use only, not for use in human, therapeutic or diagnostic applications.

CA153为高分子glycoprotein, 是乳腺癌Maker之一, 其表达的量与乳腺癌的分化程度及雌激素受体高低有关联。近年来, 很多学者研究认为:在人的很多种恶性Tumor中都有CA15-3的不同表达。

Picture:



Blank control (blue line): MCF7(fixed with 70% ethanol (Overnight at 4°C) and then permeabilized with 90% ice-cold methanol for 30 min on ice)

	<p>Primary Antibody (green line): Rabbit Anti-CA153 antibody (SL4763R), Dilution: 0.2μg /10⁶ cells;</p> <p>Isotype Control Antibody (orange line): Rabbit IgG .</p> <p>Secondary Antibody (white blue line): Goat anti-rabbit IgG-FITC, Dilution: 1μg /test.</p>
--	---

www.sunlongbiotech.com