



## Rabbit Anti-CD8 antibody

SL4790R

<b>Product Name:</b>	CD8
<b>Chinese Name:</b>	CD8抗体
<b>Alias:</b>	CD 8a; CD8 alpha chain; CD8 antigen alpha chain; CD8 antigen alpha polypeptide; CD8 antigen alpha polypeptide (p32); CD8a; CD8a antigen; CD8a molecule; CD8A_HUMAN; Leu 2; Leu2; Leu2 T lymphocyte antigen; MAL; OKT8 T cell antigen; OTTHUMP00000160760; OTTHUMP00000160764; OTTHUMP00000203528; OTTHUMP00000203721; p32; T cell antigen Leu2; T cell coreceptor; T cell coreceptor; T cell surface glycoprotein CD8 alpha chain; T lymphocyte differentiation antigen T8/Leu 2; T lymphocyte differentiation antigen T8/Leu2; T-cell surface glycoprotein CD8 alpha chain; T-lymphocyte differentiation antigen T8/Leu-2; T8 T cell antigen.
<b>Organism Species:</b>	Rabbit
<b>Clonality:</b>	Polyclonal
<b>React Species:</b>	Human,
<b>Applications:</b>	WB=1:500-2000ELISA=1:500-1000IHC-P=1:400-800IHC-F=1:400-800Flow-Cyt=1µg/TestIF=1:50-200 (Paraffin sections need antigen repair) not yet tested in other applications. optimal dilutions/concentrations should be determined by the end user.
<b>Molecular weight:</b>	27kDa
<b>Cellular localization:</b>	The cell membrane
<b>Form:</b>	Lyophilized or Liquid
<b>Concentration:</b>	1mg/ml
<b>immunogen:</b>	KLH conjugated synthetic peptide derived from human CD8:51-150/235<Extracellular>
<b>Lsotype:</b>	IgG
<b>Purification:</b>	affinity purified by Protein A
<b>Storage Buffer:</b>	0.01M TBS(pH7.4) with 1% BSA, 0.03% Proclin300 and 50% Glycerol.
<b>Storage:</b>	Store at -20 °C for one year. Avoid repeated freeze/thaw cycles. The lyophilized antibody is stable at room temperature for at least one month and for greater than a year when kept at -20°C. When reconstituted in sterile pH 7.4 0.01M PBS or diluent of antibody the antibody is stable for at least two weeks at 2-4 °C.

**PubMed:**[PubMed](#)

The CD8 antigen is a cell surface glycoprotein found on most cytotoxic T lymphocytes that mediates efficient cell-cell interactions within the immune system. The CD8 antigen acts as a coreceptor with the T-cell receptor on the T lymphocyte to recognize antigens displayed by an antigen presenting cell in the context of class I MHC molecules. The coreceptor functions as either a homodimer composed of two alpha chains or as a heterodimer composed of one alpha and one beta chain. Both alpha and beta chains share significant homology to immunoglobulin variable light chains. This gene encodes the CD8 alpha chain. Multiple transcript variants encoding different isoforms have been found for this gene. [provided by RefSeq, Nov 2011].

**Function:**

Identifies cytotoxic/suppressor T-cells that interact with MHC class I bearing targets. CD8 is thought to play a role in the process of T-cell mediated killing. CD8 alpha chains binds to class I MHC molecules alpha-3 domains.

**Subunit:**

In general heterodimer of an alpha and a beta chain linked by two disulfide bonds. Can also form homodimers. Shown to be expressed as heterodimer on thymocytes and as homodimer on peripheral blood T-lymphocytes. Interacts with the MHC class I HLA-A/B2M dimer. Interacts with LCK in a zinc-dependent manner.

**Subcellular Location:**

Membrane; Single-pass type I membrane protein.

**Similarity:**

Contains 1 Ig-like V-type (immunoglobulin-like) domain.

**SWISS:**

P01732

**Gene ID:**

925

**Database links:**

[Entrez Gene: 925](#)Human

[Omim: 186910](#)Human

[SwissProt: P01732](#)Human

[Unigene: 85258](#)Human

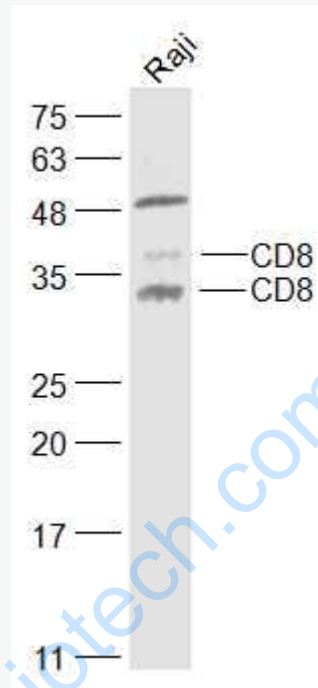
**Important Note:**

This product as supplied is intended for research use only, not for use in human,

**Product Detail:**

therapeutic or diagnostic applications.

Picture:



Sample:

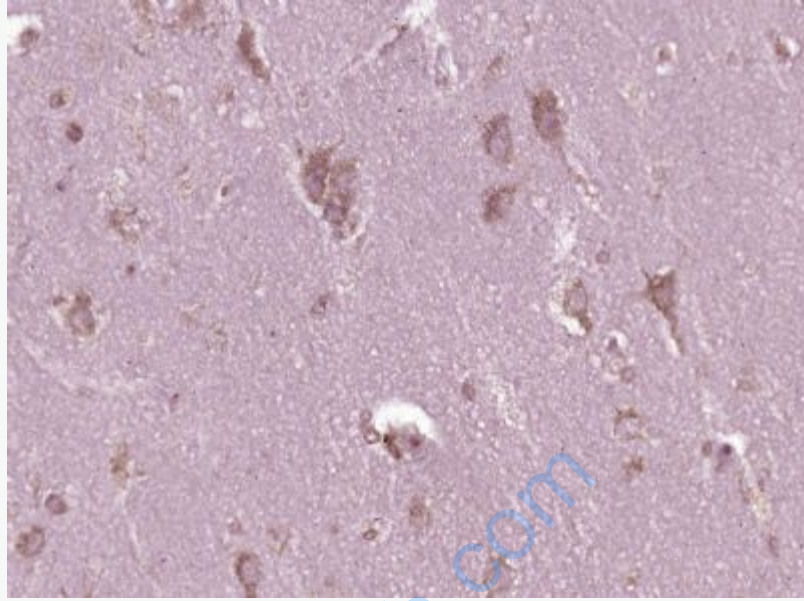
Raji(Human) Cell Lysate at 30 ug

Primary: Anti-CD8 (SL4790R) at 1/1000 dilution

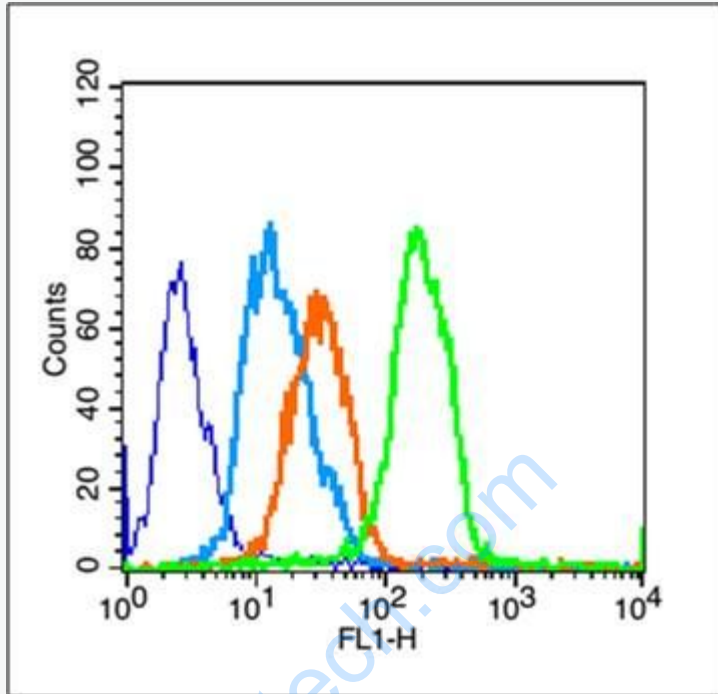
Secondary: IRDye800CW Goat Anti-Rabbit IgG at 1/20000 dilution

Predicted band size: 27 kD

Observed band size: 32/37 kD



Paraformaldehyde-fixed, paraffin embedded (Human brain glioma); Antigen retrieval by boiling in sodium citrate buffer (pH6.0) for 15min; Block endogenous peroxidase by 3% hydrogen peroxide for 20 minutes; Blocking buffer (normal goat serum) at 37°C for 30min; Antibody incubation with (CD8) Polyclonal Antibody, Unconjugated (SL4790R) at 1:400 overnight at 4°C, followed by operating according to SP Kit(Rabbit) (sp-0023) instructions and DAB staining.



Blank control (blue line): U251(fixed with 70% ethanol (Overnight at 4°C) and then permeabilized with 90% ice-cold methanol for 30 min on ice)

Primary Antibody (green line): Rabbit Anti-CD8 antibody (SL4790R), Dilution: 1 μg /10<sup>6</sup> cells;

Isotype Control Antibody (orange line): Rabbit IgG .

Secondary Antibody (white blue line): Goat anti-rabbit IgG-FITC, Dilution: 1 μg /test.