



Rabbit Anti-CD3E antibody

SL4815R

Product Name:	CD3E
Chinese Name:	CD3E抗体
Alias:	CD3 epsilon; CD3e; CD3e antigen epsilon polypeptide (TiT3 complex); CD3E antigen epsilon polypeptide; CD3E antigen, epsilon subunit; CD3e molecule epsilon; CD3e molecule, epsilon (CD3 TCR complex); CD3e molecule, epsilon (CD3-TCR complex); CD3E_HUMAN; CD3E_MOUSE; IMD18; T cell antigen receptor complex epsilon subunit of T3; T cell surface antigen T3/Leu 4 epsilon chain; T cell surface glycoprotein CD3 epsilon chain; T-cell surface antigen T3/Leu-4 epsilon chain; T-cell surface glycoprotein CD3 epsilon chain; T3E; TCRE.
文献引用 PubMed :	<p>Specific References(1) SL4815R has been referenced in 1 publications.</p> <p>[IF=3.23]Chenna Narendra S, Chalise JP, Magnusson M, Uppugunduri S (2015) Local but Not Systemic Administration of Uridine Prevents Development of Antigen-Induced Arthritis. PLoS ONE 10(10): e0141863IHC-P;Mouse.</p> <p style="text-align: right;">PubMed:26512984</p>
Organism Species:	Rabbit
Clonality:	Polyclonal
React Species:	Mouse,Rat,
Applications:	WB=1:500-2000ELISA=1:500-1000 not yet tested in other applications. optimal dilutions/concentrations should be determined by the end user.
Molecular weight:	20kDa
Cellular localization:	The cell membrane
Form:	Lyophilized or Liquid
Concentration:	1mg/ml
immunogen:	KLH conjugated synthetic peptide derived from mouse CD3 epsilon:23-120/189<Extracellular>
Lsotype:	IgG

Purification:	affinity purified by Protein A
Storage Buffer:	0.01M TBS(pH7.4) with 1% BSA, 0.03% Proclin300 and 50% Glycerol.
Storage:	Store at -20 °C for one year. Avoid repeated freeze/thaw cycles. The lyophilized antibody is stable at room temperature for at least one month and for greater than a year when kept at -20°C. When reconstituted in sterile pH 7.4 0.01M PBS or diluent of antibody the antibody is stable for at least two weeks at 2-4 °C.
PubMed:	PubMed
Product Detail:	<p>The protein encoded by this gene is the CD3-epsilon polypeptide, which together with CD3-gamma, -delta and -zeta, and the T-cell receptor alpha/beta and gamma/delta heterodimers, forms the T-cell receptor-CD3 complex. This complex plays an important role in coupling antigen recognition to several intracellular signal-transduction pathways. The genes encoding the epsilon, gamma and delta polypeptides are located in the same cluster on chromosome 11. The epsilon polypeptide plays an essential role in T-cell development. Defects in this gene cause immunodeficiency. This gene has also been linked to a susceptibility to type I diabetes in women. [provided by RefSeq, Jul 2008].</p> <p>Function: The CD3 complex mediates signal transduction.</p> <p>Subunit: The TCR/CD3 complex of T-lymphocytes consists of either a TCR alpha/beta or TCR gamma/delta heterodimer coexpressed at the cell surface with the invariant subunits of CD3 labeled gamma, delta, epsilon, zeta, and eta.</p> <p>Subcellular Location: Membrane; Single-pass type I membrane protein.</p> <p>Similarity: Contains 1 Ig-like (immunoglobulin-like) domain. Contains 1 ITAM domain.</p> <p>SWISS: P22646</p> <p>Gene ID: 12501</p> <p>Database links: Entrez Gene: 916Human Entrez Gene: 12501Mouse Omin: 186830Human SwissProt: P07766Human</p>

[SwissProt: P22646](#)Mouse

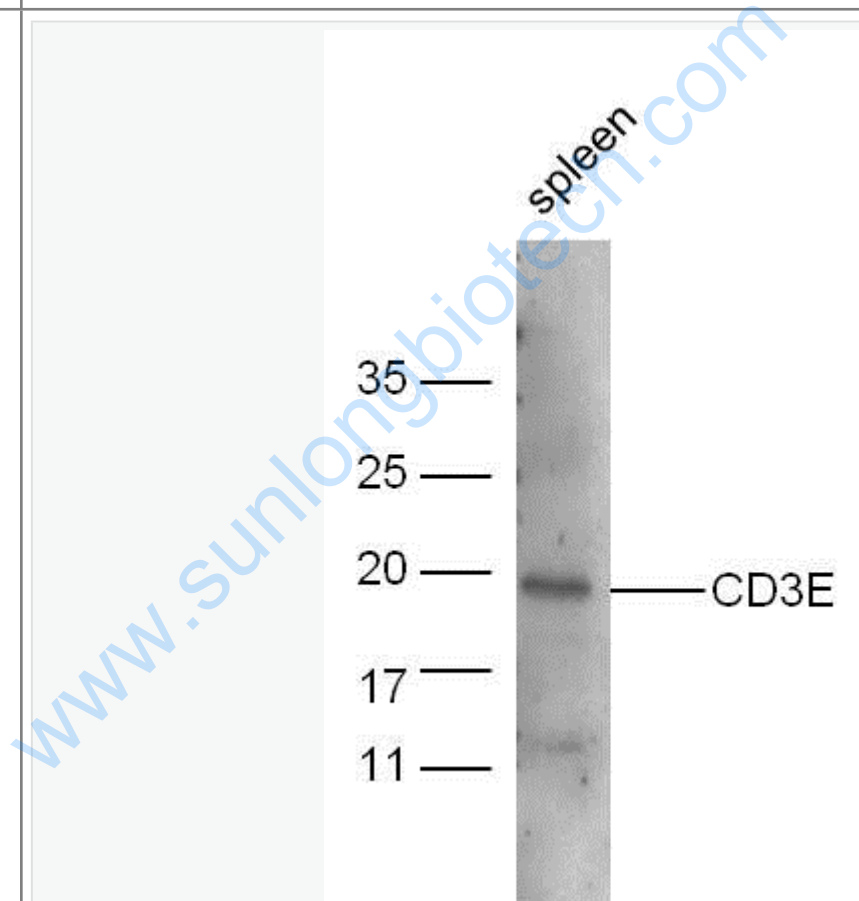
[Unigene: 3003](#)Human

[Unigene: 210361](#)Mouse

Important Note:

This product as supplied is intended for research use only, not for use in human, therapeutic or diagnostic applications.

Picture:



Sample:

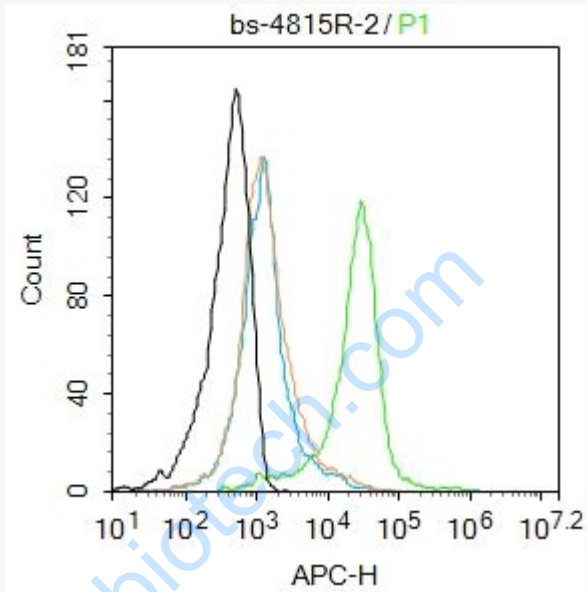
Spleen (Mouse) Lysate at 40 ug

Primary: Anti-CD3E (SL4815R) at 1/300 dilution

Secondary: IRDye800CW Goat Anti-Rabbit IgG at 1/20000 dilution

Predicted band size: 20 kD

Observed band size: 20 kD



Blank control: Mouse bone marrow.

Primary Antibody (green line): Rabbit Anti-CD3E antibody (SL4815R)

Dilution: 2 μ g /10⁶ cells;

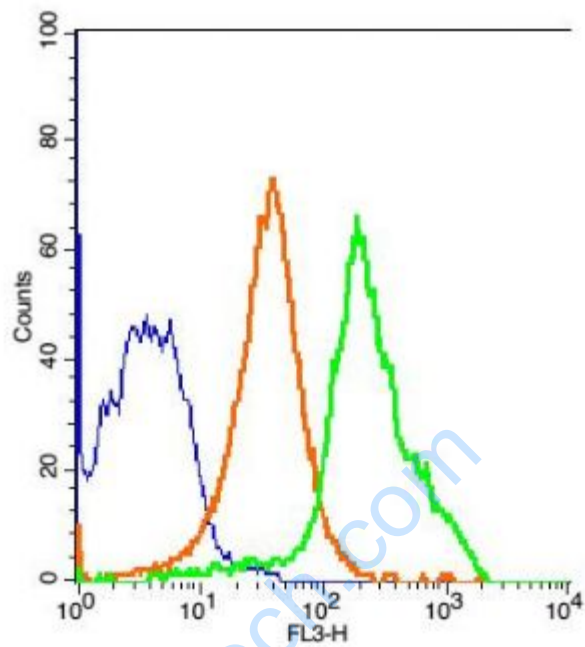
Isotype Control Antibody (orange line): Rabbit IgG .

Secondary Antibody : Goat anti-rabbit IgG-AF647

Dilution: 1 μ g /test.

Protocol

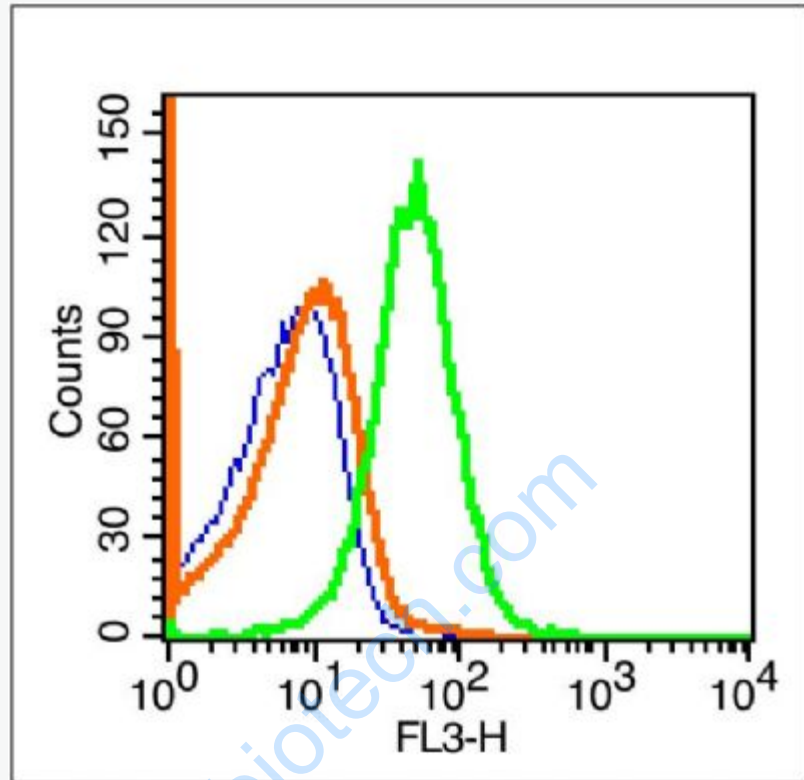
The cells were incubated in 5%BSA to block non-specific protein-protein interactions for 30 min at room temperature .Cells stained with Primary Antibody for 30 min at room temperature. The secondary antibody used for 40 min at room temperature. Acquisition of 20,000 events was performed.



Key	Name	Parameter	Gate
—	(mo)blood-blank.024	FL3-H	G1
—	bs-0295P-PE-Cy5-(mo)blood.025	FL3-H	G1
—	bs-4185R-PE-Cy5-(mo)blood.026	FL3-H	G1

Blank control: mouse blood

Isotype Control Antibody: Rabbit IgG -PE-CY5; Primary Antibody Dilution: 1 μ l in 100 μ l 1X PBS containing 0.5% BSA.



Blank control (blue line): Mouse spleen cells(fixed with 70% ice-cold methanol overnight at 4°C).

Primary Antibody (green line): Rabbit Anti-CD3E/PE-CY7 Conjugated antibody (SL4815R),Dilution: 1μg /10⁶ cells.

Isotype Control Antibody (orange line): Rabbit IgG-PE-CY7 .