



Rabbit Anti-GOLPH2 antibody

SL4887R

Product Name:	GOLPH2
Chinese Name:	高尔基体膜蛋白GP73抗体
Alias:	Chromosome 9 open reading frame 155; Golgi membrane protein 1; Golgi membrane protein GP73; Golgi phosphoprotein 2; Golgi protein 73 kD; golgi protein 73kD; GOLM1; GOLM1; GOLPH 2; GOLPH2; GP 73; GP73; PSEC0257; bA379P1.3; C9orf155.
Organism Species:	Rabbit
Clonality:	Polyclonal
React Species:	Human,Mouse,Rat,Dog,Cow,Horse,
Applications:	WB=1:500-2000ELISA=1:500-1000IHC-P=1:400-800IHC-F=1:400-800ICC=1:100-500IF=1:100-500 (Paraffin sections need antigen repair) not yet tested in other applications. optimal dilutions/concentrations should be determined by the end user.
Molecular weight:	45kDa
Cellular localization:	cytoplasmicThe cell membraneExtracellular matrix
Form:	Lyophilized or Liquid
Concentration:	1mg/ml
immunogen:	KLH conjugated synthetic peptide derived from human GOLPH2:21-120/401
Lsotype:	IgG
Purification:	affinity purified by Protein A
Storage Buffer:	0.01M TBS(pH7.4) with 1% BSA, 0.03% Proclin300 and 50% Glycerol.
Storage:	Store at -20 °C for one year. Avoid repeated freeze/thaw cycles. The lyophilized antibody is stable at room temperature for at least one month and for greater than a year when kept at -20°C. When reconstituted in sterile pH 7.4 0.01M PBS or diluent of antibody the antibody is stable for at least two weeks at 2-4 °C.
PubMed:	PubMed
Product Detail:	GOLPH2 is widely expressed. Expression levels are high in the colon, prostate, trachea and stomach; expressed at lower level in testis, muscle, lymphoid tissues, white blood cells and spleen. GOLPH2 is predominantly expressed by cells of the epithelial lineage. It is expressed at a low level in normal liver, though expression significantly increases in virus (HBV, HCV) infected liver. Expression does not increase in liver disease due to

non viral causes (alcohol induced liver disease, autoimmune hepatitis). Increased expression in hepatocytes appears to be a general feature of advanced liver disease. In liver tissue from patients with adult giant-cell hepatitis (GCH), it is strongly expressed in hepatocyte derived syncytial giant cells. GOLPH2 is constitutively expressed by biliary epithelial cells but not by hepatocytes.

Function:

Unknown. Cellular response protein to viral infection.

Subcellular Location:

Golgi apparatus, cis-Golgi network membrane. Early Golgi. Cycles via the cell surface and endosomes upon luminal pH disruption.

Tissue Specificity:

Widely expressed. Highly expressed in colon, prostate, trachea and stomach. Expressed at lower level in testis, muscle, lymphoid tissues, white blood cells and spleen. Predominantly expressed by cells of the epithelial lineage. Expressed at low level in normal liver. Expression significantly increases in virus (HBV, HCV) infected liver. Expression does not increase in liver disease due to non-viral causes (alcohol-induced liver disease, autoimmune hepatitis). Increased expression in hepatocytes appears to be a general feature of advanced liver disease. In liver tissue from patients with adult giant-cell hepatitis (GCH), it is strongly expressed in hepatocyte-derived syncytial giant cells. Constitutively expressed by biliary epithelial cells but not by hepatocytes.

Post-translational modifications:

Glycosylated.

Phosphorylation sites are present in the extracellular medium.

Similarity:

Belongs to the GOLM1/CASC4 family.

SWISS:

Q8NBJ4

Gene ID:

51280

Database links:

[Entrez Gene: 51280](#) Human

[Entrez Gene: 105348](#) Mouse

[Entrez Gene: 306725](#) Rat

[Omim: 606804](#) Human

[SwissProt: Q8NBJ4](#) Human

[SwissProt: Q91XA2](#) Mouse

[Unigene: 494337](#) Human

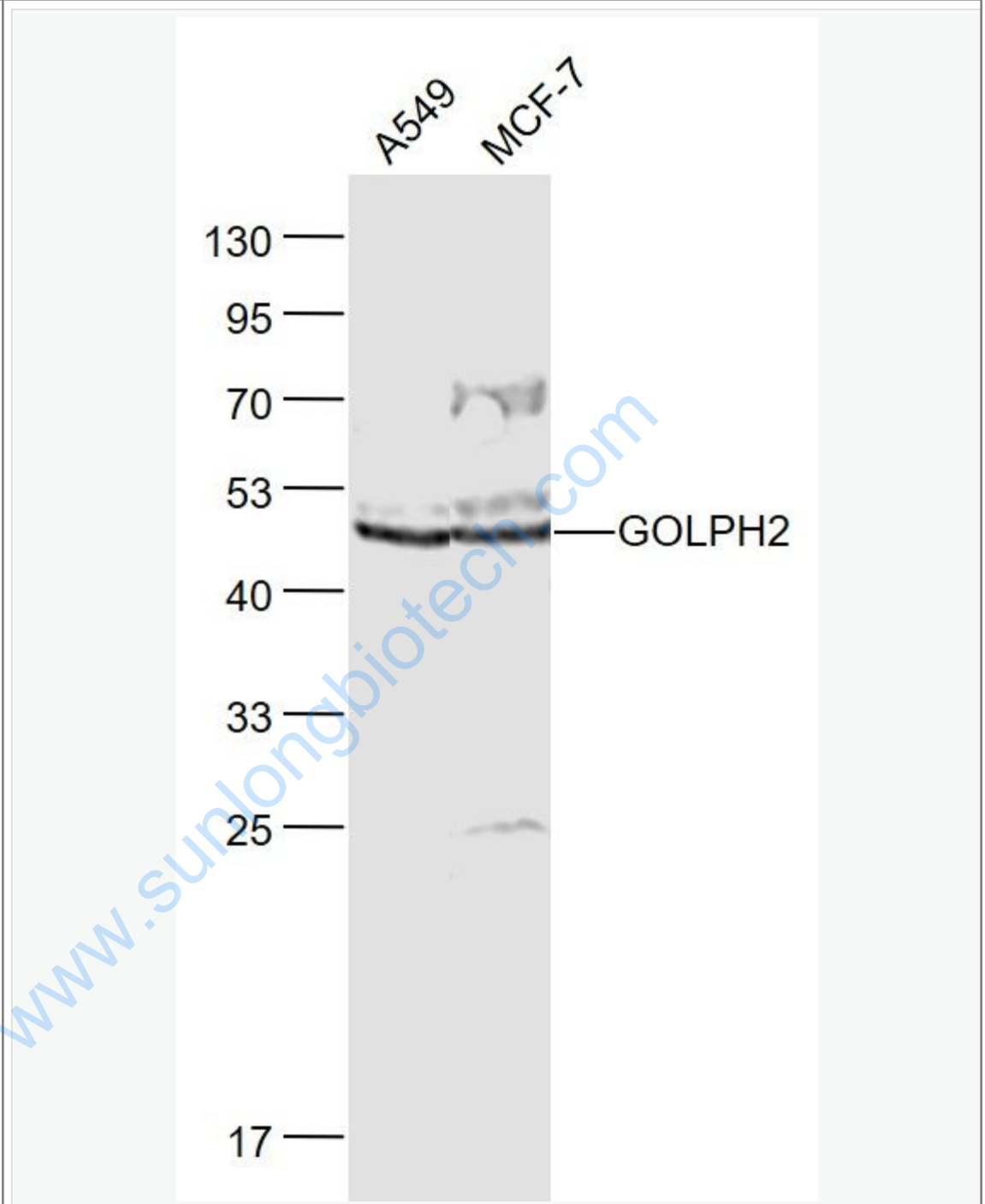
[Unigene: 171335](#) Mouse

Important Note:

This product as supplied is intended for research use only, not for use in human, therapeutic or diagnostic applications.

www.sunlongbiotech.com

Picture:



Sample:

A549(Human) Cell Lysate at 30 ug

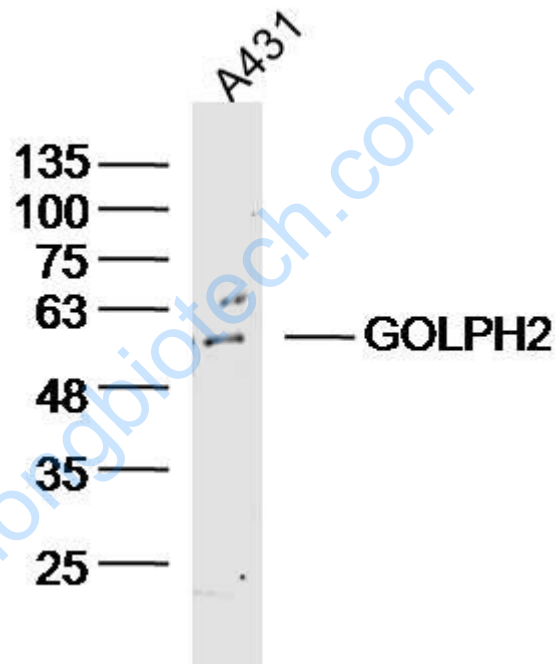
MCF-7(Human) Cell Lysate at 30 ug

Primary: Anti- TBX1 (SL4887R) at 1/1000 dilution

Secondary: IRDye800CW Goat Anti-Rabbit IgG at 1/20000 dilution

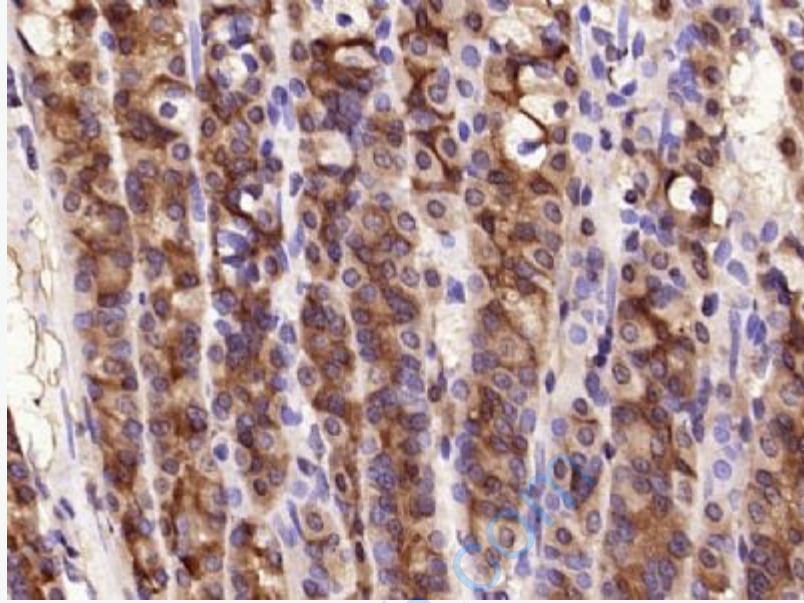
Predicted band size: 45 kD

Observed band size: 45 kD

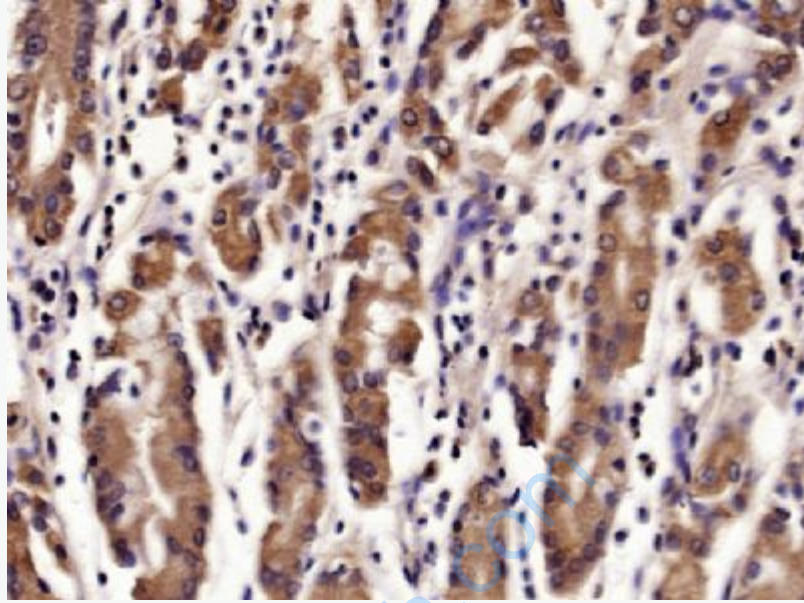


(human/cell line)A431 lysates probed with GOLPH2 Polyclonal Antibody,

Unconjugated (Catalog #bs-4887R) at 1:300 overnight at 4 x C. Followed by a conjugated secondary antibody (Secondary Catalog #926-32211) at 1:10000 for 60 min at 37 x C.



Paraformaldehyde-fixed, paraffin embedded (rat stomach tissue); Antigen retrieval by microwave in sodium citrate buffer (pH6.0) ; Block endogenous peroxidase by 3% hydrogen peroxide for 30 minutes; Blocking buffer (3%BSA) at RT for 30min; Antibody incubation with (GOLPH2) Polyclonal/Monoclonal Antibody, Unconjugated (SL4887R) at 1:400 overnight at 4°C, followed by conjugation to the secondary antibody (labeled with HRP) and DAB staining.



Paraformaldehyde-fixed, paraffin embedded (human stomach tissue); Antigen retrieval by microwave in sodium citrate buffer (pH6.0) ; Block endogenous peroxidase by 3% hydrogen peroxide for 30 minutes; Blocking buffer (3%BSA) at RT for 30min; Antibody incubation with (GOLPH2) Polyclonal/Monoclonal Antibody, Unconjugated (SL4887R) at 1:400 overnight at 4°C, followed by conjugation to the secondary antibody (labeled with HRP) and DAB staining.