



Rabbit Anti-Keratan Sulfate antibody

SL4894R

Product Name:	Keratan Sulfate
Chinese Name:	硫酸角质素抗体
Alias:	Carbohydrate chondroitin 6 keratan sulfotransferase 1; Carbohydrate chondroitin 6 keratan sulfotransferase; Carbohydrate keratan sulfate Gal 6 sulfotransferase; Carbohydrate keratan sulfate Gal 6 sulfotransferase 1; Carbohydrate sulfotransferase 1; CHST1; EC 2.8.2.21; Galactose N acetylglucosamine N acetylglucosamine 6 O sulfotransferase 1; GST 1 antibody Keratan sulfate Gal 6 sulfotransferase; KS6ST; KSGAL6ST; KSST.
Organism Species:	Rabbit
Clonality:	Polyclonal
React Species:	Human,Mouse,Rat,Chicken,Dog,Pig,Cow,Horse,Rabbit,
Applications:	WB=1:500-2000ELISA=1:500-1000IHC-P=1:400-800IHC-F=1:400-800Flow-Cyt=1µg/TestICC=1:100-500IF=1:100-500 (Paraffin sections need antigen repair) not yet tested in other applications. optimal dilutions/concentrations should be determined by the end user.
Molecular weight:	45kDa
Cellular localization:	cytoplasmicThe cell membrane
Form:	Lyophilized or Liquid
Concentration:	1mg/ml
immunogen:	KLH conjugated synthetic peptide derived from human Keratan Sulfate:251-350/411
Lsotype:	IgG
Purification:	affinity purified by Protein A
Storage Buffer:	0.01M TBS(pH7.4) with 1% BSA, 0.03% Proclin300 and 50% Glycerol.
Storage:	Store at -20 °C for one year. Avoid repeated freeze/thaw cycles. The lyophilized antibody is stable at room temperature for at least one month and for greater than a year when kept at -20°C. When reconstituted in sterile pH 7.4 0.01M PBS or diluent of antibody the antibody is stable for at least two weeks at 2-4 °C.
PubMed:	PubMed
Product Detail:	Catalyzes the transfer of sulfate to position 6 of galactose residues of keratan. It has a preference for sulfating keratan sulfate, but it also transfers sulfate to the unsulfated

polymer. The sulfotransferase activity on sialyl LacNAc structures is much higher than the corresponding desialylated substrate, and only internal galactose residues are sulfated. It also may function in the sulfation of sialyl N-acetyllactosamine oligosaccharide chains attached to glycoproteins. It participates in biosynthesis of selectin ligands. Selectin ligands are present in high endothelial cells (HEVs) and play a central role in lymphocyte homing at sites of inflammation. Aggrecan is the major proteoglycan of human articular cartilage. The core protein is substituted by a number of keratan sulfate and chondroitin sulfate glycosaminoglycan chains. Whereas chondroitin sulfate is widely distributed throughout the body, keratan sulfate is primarily expressed in cartilage (joints, trachea, intervertebral discs) and cornea.

Function:

Catalyzes the transfer of sulfate to position 6 of galactose (Gal) residues of keratan. Has a preference for sulfating keratan sulfate, but it also transfers sulfate to the unsulfated polymer. The sulfotransferase activity on sialyl LacNAc structures is much higher than the corresponding desialylated substrate, and only internal Gal residues are sulfated. May function in the sulfation of sialyl N-acetyllactosamine oligosaccharide chains attached to glycoproteins. Participates in biosynthesis of selectin ligands. Selectin ligands are present in high endothelial cells (HEVs) and play a central role in lymphocyte homing at sites of inflammation.

Subcellular Location:

Golgi apparatus membrane.

Tissue Specificity:

Widely expressed at low level. Expressed in brain and skeletal muscle. Expressed by high endothelial cells (HEVs) and leukocytes.

Similarity:

Belongs to the sulfotransferase 1 family. Gal/GlcNAc/GalNAc subfamily.

SWISS:

O43916

Gene ID:

8534

Database links:

[Entrez Gene: 8534](#)Human

[Entrez Gene: 76969](#)Mouse

[Entrez Gene: 295934](#)Rat

[Entrez Gene: 445124](#)Zebrafish

[Omid: 603797](#)Human

[SwissProt: O43916](#)Human

[SwissProt: Q9EQC0](#)Mouse

[SwissProt: Q5RJQ0](#)Rat

[SwissProt: Q6DBY9](#)Zebrafish

[Unigene: 104576](#)Human

[Unigene: 38021](#)Mouse

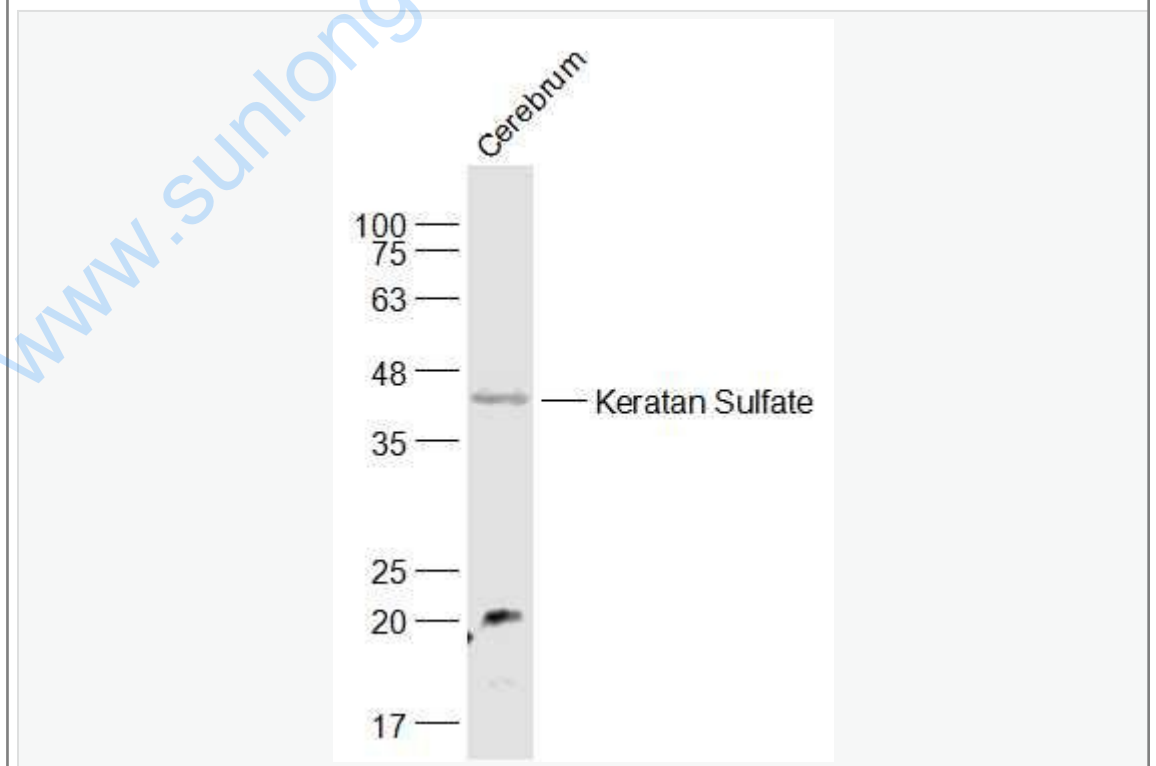
[Unigene: 16695](#)Rat

[Unigene: 85839](#)Zebrafish

Important Note:

This product as supplied is intended for research use only, not for use in human, therapeutic or diagnostic applications.

Picture:



Sample:

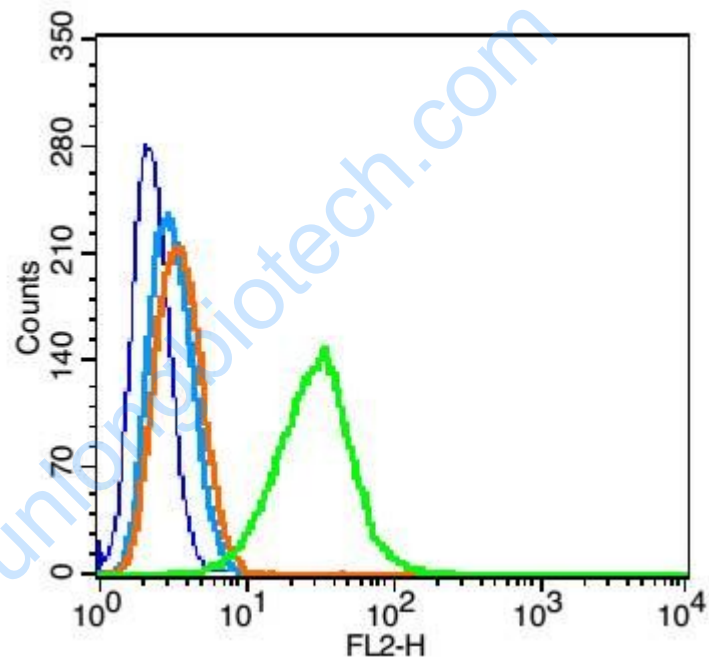
Cerebrum (Mouse) Lysate at 40 ug

Primary: Anti-Keratan Sulfate (SL4894R) at 1/1000 dilution

Secondary: IRDye800CW Goat Anti-Rabbit IgG at 1/20000 dilution

Predicted band size: 45 kD

Observed band size: 45 kD



Blank control(blue):RSC96 cells(fixed with 2% paraformaldehyde (10 min) , then permeabilized with 90% ice-cold methanol for 30 min on ice).

Primary Antibody:Rabbit Anti-Keratan Sulfate antibody(SL4894R), Dilution: 1µg in 100 µL 1X PBS containing 0.5% BSA;

Isotype Control Antibody: Rabbit IgG(orange) ,used under the same conditions);

Secondary Antibody: Goat anti-rabbit IgG-PE(white blue), Dilution: 1:200 in 1 X

	PBS containing 0.5% BSA.
--	--------------------------

www.sunlongbiotech.com