



Rabbit Anti-CD66a antibody

SL4896R

Product Name:	CD66a
Chinese Name:	癌胚抗原相关Cell adhesion molecule1抗体
Alias:	CEACAM1; carcinoembryonic antigen-related cell adhesion molecule 1 isoform 1 precursor; Antigen CD66; BGP; BGP 1; BGP I; BGP1;BGPI; Biliary glycoprotein 1; Biliary glycoprotein adhesion molecule; Biliary glycoprotein; Carcinoembryonic antigen related cell adhesion molecule 1; CD66 antigen; CD66a antigen; CEACAM 1; bb-1; C-CAM; Cc1; Cea-1; Cea-7; Cea1; Cea7; Hv-2; Hv2; mCEA1; Mhv-1; MHVR; MHVR1; mmCGM1; mmCGM1a; mmCGM2; CEAM1 HUMAN.
Organism Species:	Rabbit
Clonality:	Polyclonal
React Species:	Human,Mouse,Rat,Dog,Horse,
Applications:	WB=1:500-2000ELISA=1:500-1000IHC-F=1:400-800Flow-Cyt=1ug/TestICC=1:100-500IF=1:100-500 (Paraffin sections need antigen repair) not yet tested in other applications. optimal dilutions/concentrations should be determined by the end user.
Molecular weight:	57kDa
Cellular localization:	The cell membraneSecretory protein
Form:	Lyophilized or Liquid
Concentration:	1mg/ml
immunogen:	KLH conjugated synthetic peptide derived from human CEACAM1:241-310/526<Extracellular>
Lsotype:	IgG
Purification:	affinity purified by Protein A
Storage Buffer:	0.01M TBS(pH7.4) with 1% BSA, 0.03% Proclin300 and 50% Glycerol.
Storage:	Store at -20 °C for one year. Avoid repeated freeze/thaw cycles. The lyophilized antibody is stable at room temperature for at least one month and for greater than a year when kept at -20°C. When reconstituted in sterile pH 7.4 0.01M PBS or diluent of antibody the antibody is stable for at least two weeks at 2-4 °C.
PubMed:	PubMed
Product Detail:	This gene encodes a member of the carcinoembryonic antigen (CEA) gene family,

which belongs to the immunoglobulin superfamily. Two subgroups of the CEA family, the CEA cell adhesion molecules and the pregnancy-specific glycoproteins, are located within a 1.2 Mb cluster on the long arm of chromosome 19. Eleven pseudogenes of the CEA cell adhesion molecule subgroup are also found in the cluster. The encoded protein was originally described in bile ducts of liver as biliary glycoprotein. Subsequently, it was found to be a cell-cell adhesion molecule detected on leukocytes, epithelia, and endothelia. The encoded protein mediates cell adhesion via homophilic as well as heterophilic binding to other proteins of the subgroup. Multiple cellular activities have been attributed to the encoded protein, including roles in the differentiation and arrangement of tissue three-dimensional structure, angiogenesis, apoptosis, tumor suppression, metastasis, and the modulation of innate and adaptive immune responses. Multiple transcript variants encoding different isoforms have been reported, but the full-length nature of all variants has not been defined. [provided by RefSeq, May 2010].

Subcellular Location:

Isoform 1: Cell membrane; Single-pass type I membrane protein. Isoform 2: Secreted. Isoform 3: Secreted. Isoform 4: Secreted. Isoform 5: Cell membrane; Single-pass type I membrane protein. Isoform 6: Cell membrane; Single-pass type I membrane protein. Isoform 7: Cell membrane; Single-pass type I membrane protein. Isoform 8: Cell membrane; Single-pass type I membrane protein. Note=Localizes to sites of cell-cell contact.

Similarity:

Belongs to the immunoglobulin superfamily. CEA family.
Contains 3 Ig-like C2-type (immunoglobulin-like) domains.
Contains 1 Ig-like V-type (immunoglobulin-like) domain.

SWISS:

P13688

Gene ID:

634

Database links:

[Entrez Gene: 634](#) Human

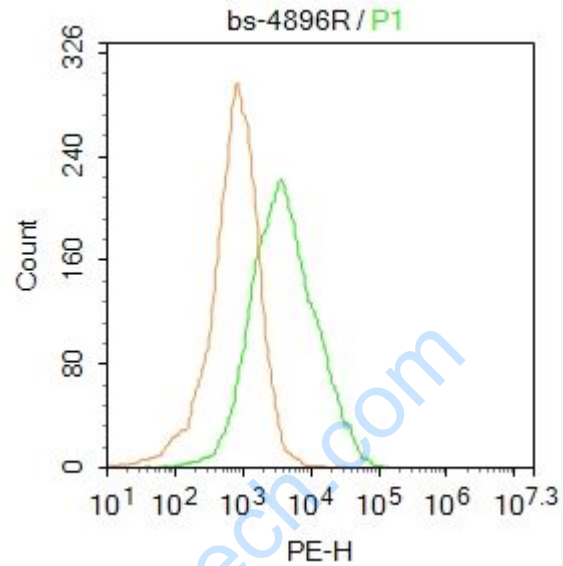
[Omim: 109770](#) Human

[SwissProt: P13688](#) Human

[Unigene: 512682](#) Human

Important Note:

This product as supplied is intended for research use only, not for use in human, therapeutic or diagnostic applications.



Blank control: HepG2.

Primary Antibody (green line): Rabbit Anti-CD66a antibody (SL4896R)

Dilution: 1µg /10⁶ cells;

Isotype Control Antibody (orange line): Rabbit IgG .

Secondary Antibody : Goat anti-rabbit IgG-PE

Dilution: 1µg /test.

Protocol

The cells then incubated in 5%BSA to block non-specific protein-protein interactions for 30 min at at room temperature .Cells stained with Primary Antibody for 30 min at room temperature. The secondary antibody used for 40 min at room temperature. Acquisition of 20,000 events was performed.

Picture: