



## Rabbit Anti-SORBS2 antibody

SL4905R

|                               |   |
|-------------------------------|---|
| <b>Product Name:</b>          | SORBS2  |
| <b>Chinese Name:</b>          | 精氨酸Binding protein2抗体   |
| <b>Alias:</b>                 | ArgBP2; Arg binding protein 2; Arg/Abl interacting protein 2; Arg/Abl interacting protein; ARGBP2; PRO0618; SRBS2 HUMAN; sorbin and SH3 domain containing 2.  |
| <b>Organism Species:</b>      | Rabbit  |
| <b>Clonality:</b>             | Polyclonal  |
| <b>React Species:</b>         | Human,Mouse,Rat,Chicken,Dog,Pig,Horse,Rabbit,   |
| <b>Applications:</b>          | WB=1:500-2000ELISA=1:500-1000IHC-P=1:400-800IHC-F=1:400-800IF=1:50-200 (Paraffin sections need antigen repair)<br>not yet tested in other applications.<br>optimal dilutions/concentrations should be determined by the end user.   |
| <b>Molecular weight:</b>      | 124kDa  |
| <b>Cellular localization:</b> | cytoplasmic   |
| <b>Form:</b>                  | Lyophilized or Liquid   |
| <b>Concentration:</b>         | 1mg/ml  |
| <b>immunogen:</b>             | KLH conjugated synthetic peptide derived from human SORBS2/ArgBP2:401-500/664   |
| <b>Lsotype:</b>               | IgG   |
| <b>Purification:</b>          | affinity purified by Protein A  |
| <b>Storage Buffer:</b>        | 0.01M TBS(pH7.4) with 1% BSA, 0.03% Proclin300 and 50% Glycerol.  |
| <b>Storage:</b>               | Store at -20 °C for one year. Avoid repeated freeze/thaw cycles. The lyophilized antibody is stable at room temperature for at least one month and for greater than a year when kept at -20°C. When reconstituted in sterile pH 7.4 0.01M PBS or diluent of antibody the antibody is stable for at least two weeks at 2-4 °C. |
| <b>PubMed:</b>                | <a href="#">PubMed</a>  |
| <b>Product Detail:</b>        | SORBS2 is an adapter protein that plays a role in the assembling of signaling complexes, being a link between ABL kinases and actin cytoskeleton. It can form a complex with ABL1 and CBL, thus promoting ubiquitination and degradation of ABL1 or with AKT1 and PAK1, thus mediating AKT1-mediated activation of PAK1.      |
|                               | <b>Function:</b>  |

Adapter protein that plays a role in the assembling of signaling complexes, being a link between ABL kinases and actin cytoskeleton. Can form complex with ABL1 and CBL, thus promoting ubiquitination and degradation of ABL1 or with AKT1 and PAK1, thus mediating AKT1-mediated activation of PAK1. Isoform 6 increases water and sodium absorption in the intestine and gall-bladder.

**Subunit:**

Interacts with ABL, CBL, DNM1, DNM2, FLOT1, MLLT4/afadin, PTK2B/PYK2, SAPAP, SPTAN1, SYNJ1, SYNJ2, VCL/vinculin, and WASF (By similarity). Interacts with ABL1/c-Abl, ABL2/v-Abl/Arg, ACTN, AKT1, CBL, PALLD and PAK1.

**Subcellular Location:**

Cytoplasm, perinuclear region. Note=Found at the Z-disk sarcomeres, stress fibers, dense bodies and focal adhesion.

**Tissue Specificity:**

Abundantly expressed in heart. In cardiac muscle cells, located in the Z-disks of sarcomere. Also found, but to a lower extent, in small and large intestine, pancreas, thymus, colon, spleen, prostate, testis, brain, ovary and epithelial cells.

**Post-translational modifications:**

Ubiquitinated by CBL.

**Similarity:**

Contains 3 SH3 domains.  
Contains 1 SoHo domain.

**SWISS:**

O94875

**Gene ID:**

8470

**Database links:**

[Entrez Gene: 8470](#)Human

[Omim: 616349](#)Human

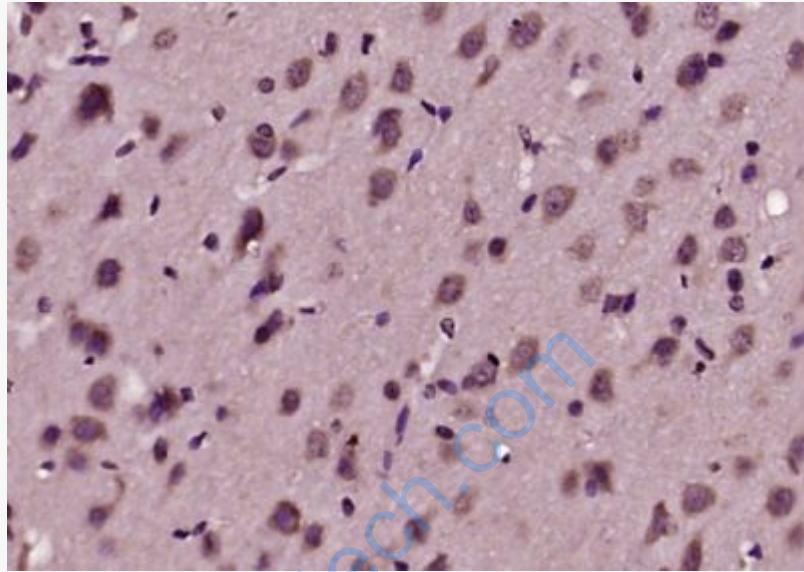
[SwissProt: O94875](#)Human

[Unigene: 619806](#)Human

[Unigene: 655143](#)Human

**Important Note:**

This product as supplied is intended for research use only, not for use in human, therapeutic or diagnostic applications.



**Picture:**

Paraformaldehyde-fixed, paraffin embedded (rat brain tissue); Antigen retrieval by boiling in sodium citrate buffer (pH6.0) for 15min; Block endogenous peroxidase by 3% hydrogen peroxide for 20 minutes; Blocking buffer (normal goat serum) at 37°C for 30min; Antibody incubation with (SORBS2) Polyclonal Antibody, Unconjugated (SL4905R) at 1:200 overnight at 4°C, followed by operating according to SP Kit(Rabbit) (sp-0023) instructions and DAB staining.