



## Rabbit Anti-SLC40A1 antibody

SL4906R

|                               |   |
|-------------------------------|---|
| <b>Product Name:</b>          | SLC40A1   |
| <b>Chinese Name:</b>          | The cell membrane铁TransporterFP1 抗体   |
| <b>Alias:</b>                 | Ferroportin 1; Ferroportin-1; FPN1; HFE4; IREG1; Iron regulated transporter 1; Iron-regulated transporter 1; MTP1; S40A1_HUMAN; SLC40A1; Solute carrier family 40 member 1; MST079; MSTP079; MTP1; SLC11A3.   |
| <b>Organism Species:</b>      | Rabbit  |
| <b>Clonality:</b>             | Polyclonal  |
| <b>React Species:</b>         | Human,Mouse,Rat,Dog,Pig,Rabbit,   |
| <b>Applications:</b>          | WB=1:500-2000ELISA=1:500-1000<br>not yet tested in other applications.<br>optimal dilutions/concentrations should be determined by the end user.  |
| <b>Molecular weight:</b>      | 63kDa   |
| <b>Cellular localization:</b> | The cell membrane   |
| <b>Form:</b>                  | Lyophilized or Liquid   |
| <b>Concentration:</b>         | 1mg/ml  |
| <b>immunogen:</b>             | KLH conjugated synthetic peptide derived from human SLC40A1/FPN1:331-430/571  |
| <b>Lsotype:</b>               | IgG   |
| <b>Purification:</b>          | affinity purified by Protein A  |
| <b>Storage Buffer:</b>        | 0.01M TBS(pH7.4) with 1% BSA, 0.03% Proclin300 and 50% Glycerol.  |
| <b>Storage:</b>               | Store at -20 °C for one year. Avoid repeated freeze/thaw cycles. The lyophilized antibody is stable at room temperature for at least one month and for greater than a year when kept at -20°C. When reconstituted in sterile pH 7.4 0.01M PBS or diluent of antibody the antibody is stable for at least two weeks at 2-4 °C.   |
| <b>PubMed:</b>                | <a href="#">PubMed</a>  |
| <b>Product Detail:</b>        | SLC40A1 may be involved in iron export from duodenal epithelial cells and also in transfer of iron between maternal and fetal circulation. It mediates iron efflux in the presence of a ferroxidase (hephaestin and/or ceruloplasmin). Defects in SLC40A1 are the cause of hemochromatosis type 4, an autosomal dominant iron-loading disorder characterized by early iron accumulation in reticuloendothelial cells and a marked increase in serum ferritin. |

**Function:**

May be involved in iron export from duodenal epithelial cell and also in transfer of iron between maternal and fetal circulation. Mediates iron efflux in the presence of a ferroxidase (hephaestin and/or ceruloplasmin).

**Subunit:**

Belongs to the S1LC40A transporter family.

**Subcellular Location:**

Cell membrane. Localized to the basolateral membrane of polarized epithelial cells.

**Tissue Specificity:**

Expressed in placenta, intestine, muscle and spleen.

**DISEASE:**

Defects in SLC40A1 are the cause of hemochromatosis type 4 (HFE4) [MIM:606069]. HFE4 is an autosomal dominant iron-loading disorder characterized by early iron accumulation in reticuloendothelial cells and a marked increase in serum ferritin before elevation of the transferrin saturation.

**Similarity:**

Belongs to the ferroportin (FP) (TC 2.A.100) family. SLC40A subfamily.

**SWISS:**

Q9NP59

**Gene ID:**

30061

**Database links:**

[Entrez Gene: 30061](#) Human

[Entrez Gene: 53945](#) Mouse

[Entrez Gene: 170840](#) Rat

[Omim: 604653](#) Human

[SwissProt: Q9NP59](#) Human

[SwissProt: Q9JHI9](#) Mouse

[SwissProt: Q923U9](#) Rat

[Unigene: 643005](#) Human

[Unigene: 28756](#) Mouse

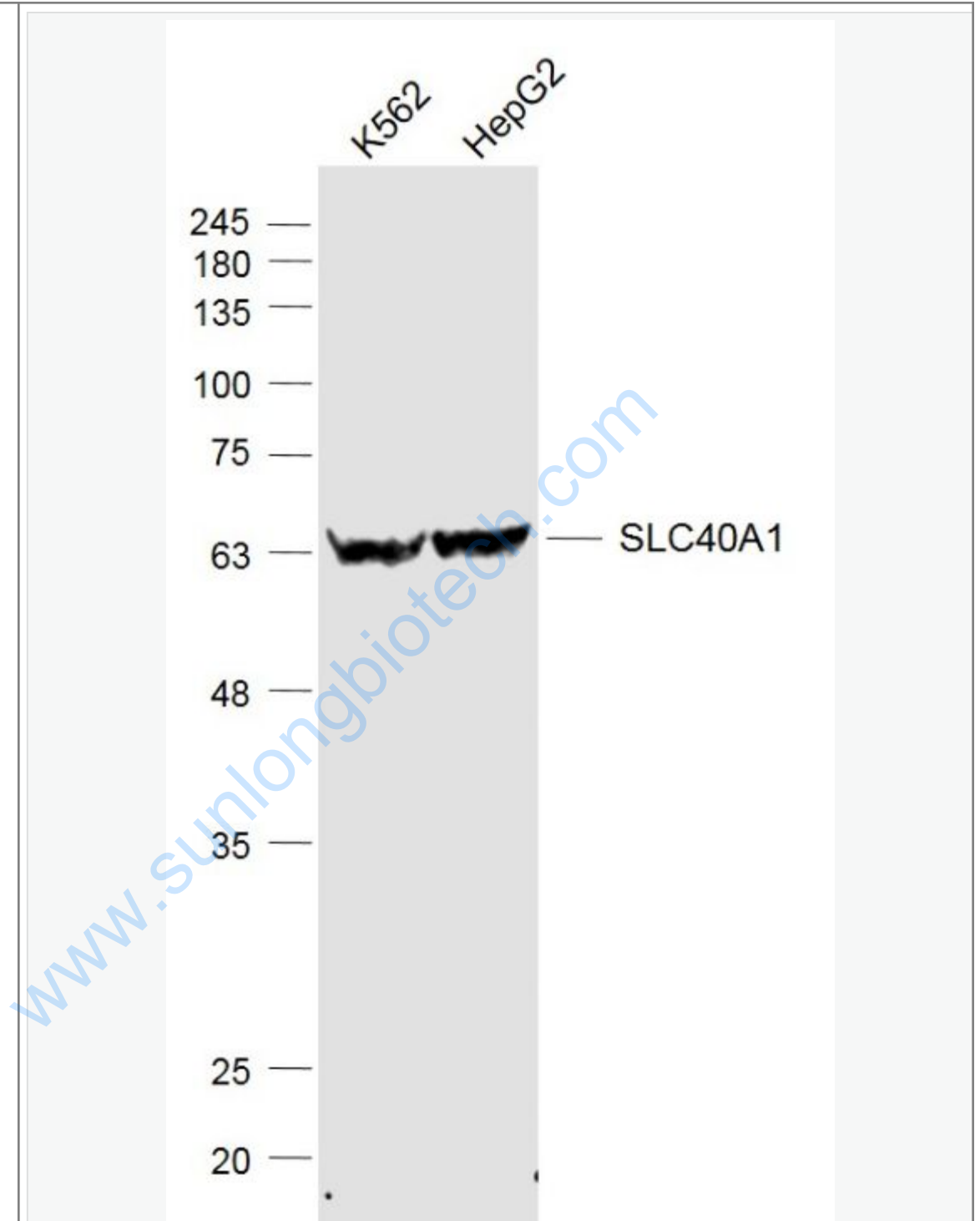
[Unigene: 15324](#) Rat

**Important Note:**

This product as supplied is intended for research use only, not for use in human, therapeutic or diagnostic applications.

[www.sunlongbiotech.com](http://www.sunlongbiotech.com)

Picture:



Sample:

K562 (Human) Cell Lysate at 30 ug

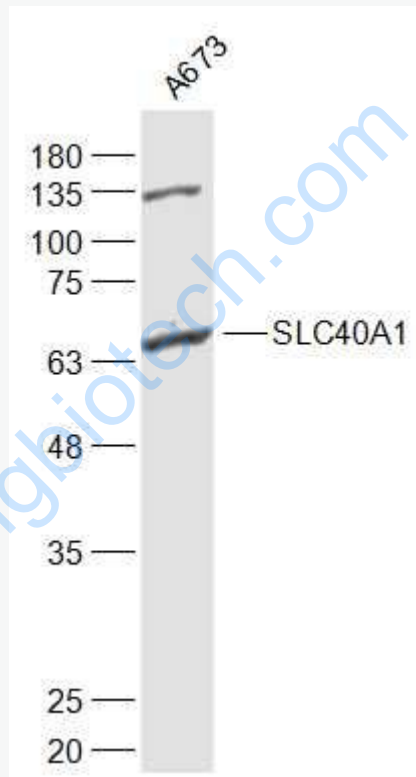
HepG2 (Human) Cell Lysate at 30 ug

Primary: Anti-SLC40A1 (SL4906R) at 1/1000 dilution

Secondary: IRDye800CW Goat Anti-Rabbit IgG at 1/20000 dilution

Predicted band size: 63 kD

Observed band size: 63 kD



Sample:

A673(Human) Cell Lysate at 30 ug

Primary: Anti-SLC40A1(SL4906R) at 1/1000 dilution

Secondary: IRDye800CW Goat Anti-Rabbit IgG at 1/20000 dilution

Predicted band size: 63 kD

Observed band size: 65 kD