



Rabbit Anti-CD8B antibody

SL4914R

Product Name:	CD8B
Chinese Name:	CD8β链(CD8-β) 抗体
Alias:	CD8b antigen; T cell surface glycoprotein CD8 beta chain; CD8 antigen beta polypeptide 1 (p37); CD8 antigen beta polypeptide 1; CD8 beta; CD8b; CD8b molecule; CD8B_HUMAN; CD8B1; Leu2; Ly3; LYT3; MGC119115; T lymphocyte surface glycoprotein beta chain; T-cell surface glycoprotein CD8 beta chain.
Organism Species:	Rabbit
Clonality:	Polyclonal
React Species:	Human,Mouse,Rat,Chicken,Pig,Horse,Guinea Pig,
Applications:	WB=1:500-2000ELISA=1:500-1000IHC-P=1:400-800IHC-F=1:400-800ICC=1:100-500IF=1:100-500 (Paraffin sections need antigen repair) not yet tested in other applications. optimal dilutions/concentrations should be determined by the end user.
Molecular weight:	21kDa
Cellular localization:	The cell membraneSecretory protein
Form:	Lyophilized
Concentration:	1mg/ml
immunogen:	KLH conjugated synthetic peptide derived from human CD8B:51-150/210<Extracellular>
Lsotype:	IgG
Purification:	affinity purified by Protein A
Storage Buffer:	0.01M TBS(pH7.4) with 1% BSA, 0.03% Proclin300 and 50% Glycerol.
Storage:	Store at -20 °C for one year. Avoid repeated freeze/thaw cycles. The lyophilized antibody is stable at room temperature for at least one month and for greater than a year when kept at -20°C. When reconstituted in sterile pH 7.4 0.01M PBS or diluent of antibody the antibody is stable for at least two weeks at 2-4 °C.
PubMed:	PubMed
Product Detail:	The CD8 antigen is a cell surface glycoprotein found on most cytotoxic T lymphocytes that mediates efficient cell-cell interactions within the immune system. The CD8 antigen acts as a coreceptor with the T-cell receptor on the T lymphocyte to recognize antigens

displayed by an antigen presenting cell in the context of class I MHC molecules. The coreceptor functions as either a homodimer composed of two alpha chains or as a heterodimer composed of one alpha and one beta chain. Both alpha and beta chains share significant homology to immunoglobulin variable light chains. This gene encodes the CD8 alpha chain. Multiple transcript variants encoding different isoforms have been found for this gene. [provided by RefSeq, Nov 2011].

Function:

Identifies cytotoxic/suppressor T-cells that interact with MHC class I bearing targets. CD8 is thought to play a role in the process of T-cell mediated killing.

Subunit:

In general heterodimer of an alpha and a beta chain linked by two disulfide bonds.

Subcellular Location:

Isoform 1, 2, 4, 5: Cell membrane; Single-pass type I membrane protein. Isoform 3, 6, 7, 8: Secreted.

Tissue Specificity:

Isoform 1, isoform 3, isoform 5, isoform 6, isoform 7 and isoform 8 are expressed in both thymus and peripheral CD8+ T-cells. Expression of isoform 1 is higher in thymus CD8+ T-cells than in peripheral CD8+ T-cells. Expression of isoform 6 is higher in peripheral CD8+ T-cells than in thymus CD8+ T-cells.

Similarity:

Contains 1 Ig-like V-type (immunoglobulin-like) domain.

SWISS:

P10966

Gene ID:

926

Database links:

[Entrez Gene: 926](#)Human

[Entrez Gene: 12526](#)Mouse

[Omin: 186730](#)Human

[SwissProt: P10966](#)Human

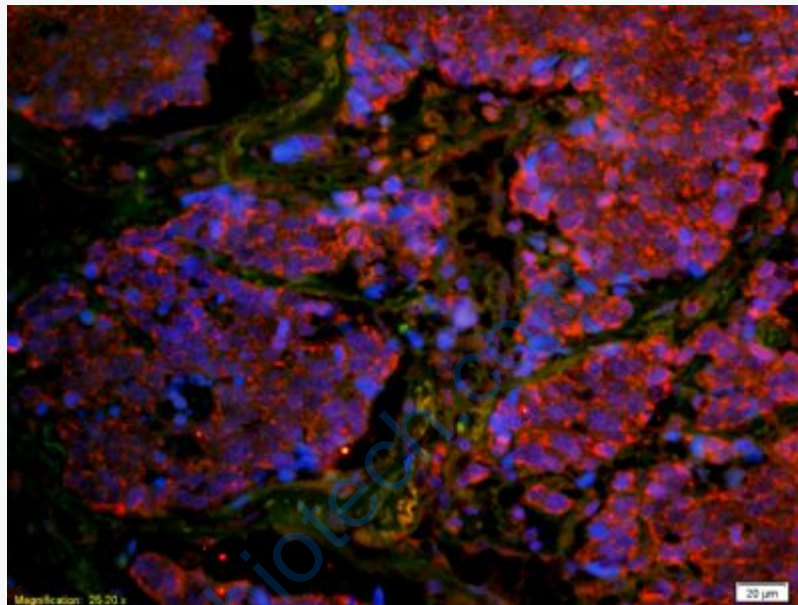
[SwissProt: P10300](#)Mouse

[Unigene: 405667](#)Human

[Unigene: 333148](#)Mouse

Important Note:

This product as supplied is intended for research use only, not for use in human, therapeutic or diagnostic applications.



Picture:

Tissue/cell: human lung carcinoma;4% Paraformaldehyde-fixed and paraffin-embedded;

Antigen retrieval: citrate buffer (0.01M, pH 6.0), Boiling bathing for 15min;

Blocking buffer (normal goat serum,C-0005) at 37°C for 20 min;

Incubation: Anti-CD8 Polyclonal Antibody, Unconjugated(SL4914R) 1:200,

overnight at 4°C; The secondary antibody was Goat Anti-Rabbit IgG, Cy3

conjugated(SL4914R)used at 1:200 dilution for 40 minutes at 37°C.

DAPI(5ug/ml,blue,C-0033) was used to stain the cell nuclei