



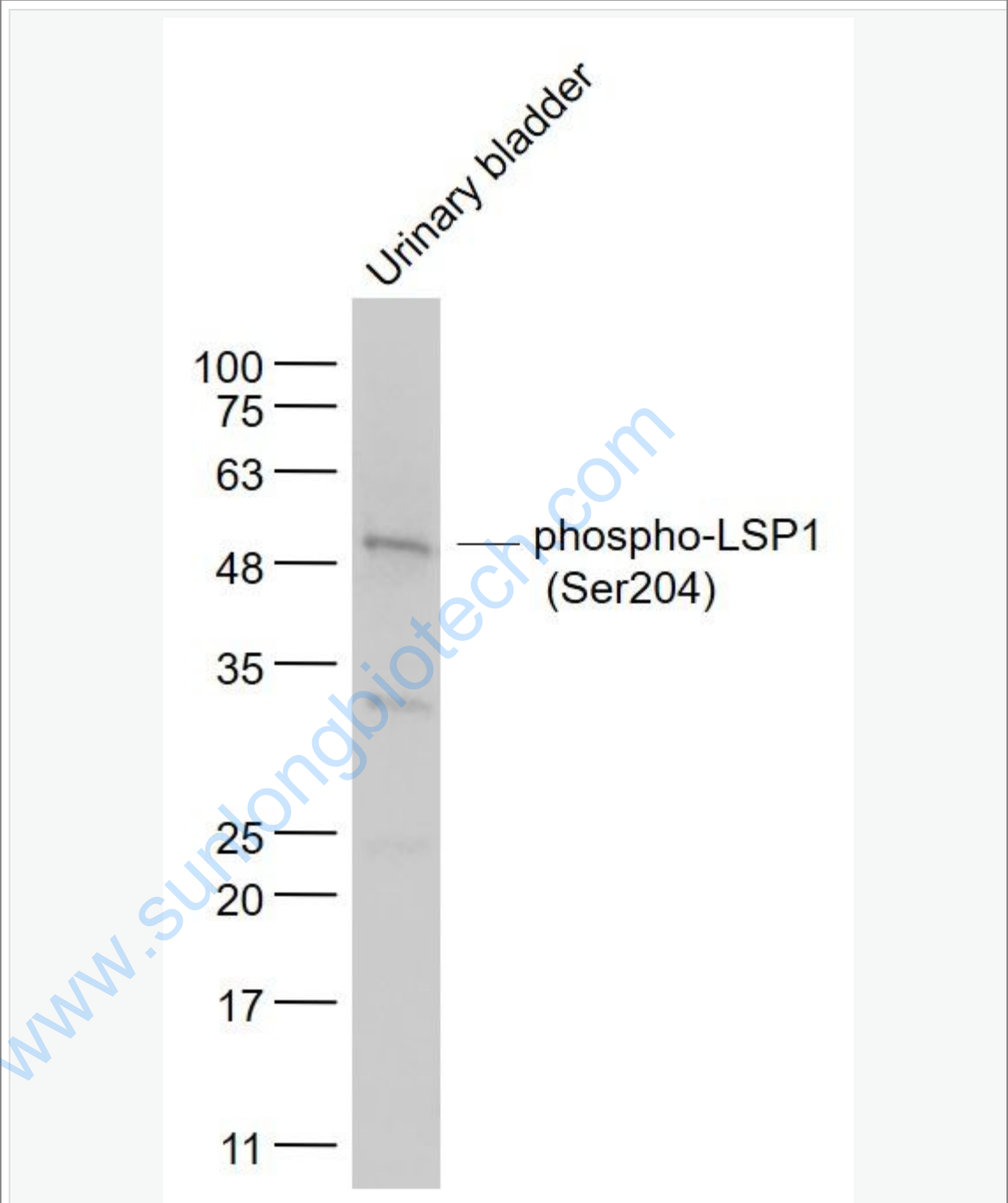
Rabbit Anti-phospho-LSP1 (Ser204) antibody

SL5155R

Product Name:	phospho-LSP1 (Ser204)
Chinese Name:	磷酸化白细胞F肌动蛋白Binding protein抗体
Alias:	47 kDa actin binding protein; 47 kDa actin-binding protein; 52 kDa phosphoprotein; F actin binding and cytoskeleton associated protein; Leuactin (leukocyte F-actin binding protein); Leuactin; Leukocyte F actin binding protein; Leukocyte specific protein 1; LSP 1; Lsp1; LSP1_HUMAN; Lymphocyte specific antigen WP34; Lymphocyte specific protein 1; Lymphocyte specific protein pp52; Lymphocyte-specific antigen WP34; Lymphocyte-specific protein 1; OTTHUMP00000014138; OTTHUMP00000014139; OTTHUMP00000014140; OTTHUMP00000069612; OTTHUMP00000069614; OTTHUMP00000069615; OTTHUMP00000069616; pp52; Protein pp52; S37 protein; WP 34; WP34.
Organism Species:	Rabbit
Clonality:	Polyclonal
React Species:	Human,Mouse,Rat,Chicken,Dog,Cow,Horse,
Applications:	WB=1:500-2000ELISA=1:500-1000IHC-P=1:400-800IHC-F=1:400-800IF=1:100-500 (Paraffin sections need antigen repair) not yet tested in other applications. optimal dilutions/concentrations should be determined by the end user.
Molecular weight:	37kDa
Cellular localization:	cytoplasmicThe cell membrane
Form:	Lyophilized or Liquid
Concentration:	1mg/ml
immunogen:	KLH conjugated Synthesised phosphopeptide derived from human LSP1 around the phosphorylation site of Ser204:TE(p-S)LN
Lsotype:	IgG
Purification:	affinity purified by Protein A
Storage Buffer:	0.01M TBS(pH7.4) with 1% BSA, 0.03% Proclin300 and 50% Glycerol.
Storage:	Store at -20 °C for one year. Avoid repeated freeze/thaw cycles. The lyophilized antibody is stable at room temperature for at least one month and for greater than a year

	when kept at -20°C. When reconstituted in sterile pH 7.4 0.01M PBS or diluent of antibody the antibody is stable for at least two weeks at 2-4 °C.
PubMed:	PubMed
Product Detail:	<p>May play a role in mediating neutrophil activation and chemotaxis.</p> <p>Function: May play a role in mediating neutrophil activation and chemotaxis (By similarity).</p> <p>Subunit: Binds actin.</p> <p>Subcellular Location: Cell membrane; Peripheral membrane protein; Cytoplasmic side.</p> <p>Tissue Specificity: Activated T-lymphocytes.</p> <p>Post-translational modifications: Phosphorylated by casein kinase II, protein kinase C and MAPKAPK2. Phosphorylation by PKC induces translocation from membrane to cytoplasm. Phosphorylation by MAPKAPK2 may regulate neutrophil chemotaxis (By similarity).</p> <p>SWISS: P33241</p> <p>Gene ID: 4046</p> <p>Database links: UniProtKB/Swiss-Prot: P33241.1</p> <p>Important Note: This product as supplied is intended for research use only, not for use in human, therapeutic or diagnostic applications.</p>

Picture:



Sample:

Urinary bladder (Mouse) Lysate at 40 ug

Primary: Anti- phospho-LSP1 (Ser204) (SL5155R) at 1/1000 dilution

Secondary: IRDye800CW Goat Anti-Rabbit IgG at 1/20000 dilution

	<p>Predicted band size: 37 kD</p>
--	-----------------------------------

	<p>Observed band size: 52 kD</p>
--	----------------------------------

www.sunlongbiotech.com