



## Rabbit Anti-MYLPF antibody

SL5159R

<b>Product Name:</b>	MYLPF
<b>Chinese Name:</b>	快速骨骼肌肌球蛋白轻链2抗体
<b>Alias:</b>	2410014J02Rik; DKFZp779C0757; DTNB; Fast skeletal myosin light chain 2; G2; HUMMLC2B; MGC13450; MLC 2; MRLC2; MYL11; MLC2B; MLC2F; MLRS_HUMAN; MYLPF; Myosin light polypeptide 2 alkali; Myosin regulatory light chain 2, skeletal muscle isoform.
<b>Organism Species:</b>	Rabbit
<b>Clonality:</b>	Polyclonal
<b>React Species:</b>	Human,Mouse,Rat,Dog,Pig,Cow,Horse,Rabbit,Sheep,
<b>Applications:</b>	WB=1:500-2000ELISA=1:500-1000IHC-P=1:400-800IHC-F=1:400-800IF=1:100-500 (Paraffin sections need antigen repair) not yet tested in other applications. optimal dilutions/concentrations should be determined by the end user.
<b>Molecular weight:</b>	19kDa
<b>Cellular localization:</b>	cytoplasmic
<b>Form:</b>	Lyophilized or Liquid
<b>Concentration:</b>	1mg/ml
<b>immunogen:</b>	KLH conjugated synthetic peptide derived from human Fast skeletal myosin light chain 2:101-170/170
<b>Lsotype:</b>	IgG
<b>Purification:</b>	affinity purified by Protein A
<b>Storage Buffer:</b>	0.01M TBS(pH7.4) with 1% BSA, 0.03% Proclin300 and 50% Glycerol.
<b>Storage:</b>	Store at -20 °C for one year. Avoid repeated freeze/thaw cycles. The lyophilized antibody is stable at room temperature for at least one month and for greater than a year when kept at -20°C. When reconstituted in sterile pH 7.4 0.01M PBS or diluent of antibody the antibody is stable for at least two weeks at 2-4 °C.
<b>PubMed:</b>	<a href="#">PubMed</a>
<b>Product Detail:</b>	Myosin is a highly conserved, ubiquitously expressed protein that interacts with Actin to generate the force for cellular movements. Conventional Myosins are hexameric proteins consisting of two heavy chain subunits, a pair of non-phosphorylatable light chain

subunits and a pair of phosphorylatable light chain subunits. Three general classes of Myosin have been cloned: smooth muscle Myosins, striated muscle Myosins and non-muscle Myosins. Contractile activity in smooth muscle is regulated by the calcium/calmodulin-dependent phosphorylation of Myosin light chain (MLC) by Myosin light chain kinase. Myosin heavy chains, which are encoded by the MYH gene family, contain Actin-activated ATPase activity which generates the motor function of Myosin. Myosin heavy chains were initially isolated from a human fetal skeletal muscle and are the major determinant in the speed of contraction of skeletal muscle. Various isoforms of myosin heavy chains are differentially expressed depending on the functional activity of the muscle.

**Subunit:**

Myosin is a hexamer of 2 heavy chains and 4 light chains.

**Tissue Specificity:**

Expressed in fetal and adult skeletal muscle.

**Similarity:**

Contains 3 EF-hand domains.

**SWISS:**

Q96A32

**Gene ID:**

29895

**Database links:**

[Entrez Gene: 29895](#) Human

[Entrez Gene: 396470](#) Chicken

[Entrez Gene: 317657](#) Cow

[Entrez Gene: 4632](#) Human

[Entrez Gene: 17901](#) Mouse

[Entrez Gene: 17907](#) Mouse

[Entrez Gene: 24584](#) Rat

[Entrez Gene: 56781](#) Rat

[Omim: 160780](#) Human

[SwissProt: P02609](#) Chicken

[SwissProt: P05976](#) Human

[SwissProt: P06741](#) Human

[SwissProt: Q14324](#) Human

[SwissProt: P05978](#) Mouse

[SwissProt: P97457](#) Mouse

[SwissProt: P02602](#) Rabbit

[SwissProt: P02603](#) Rabbit

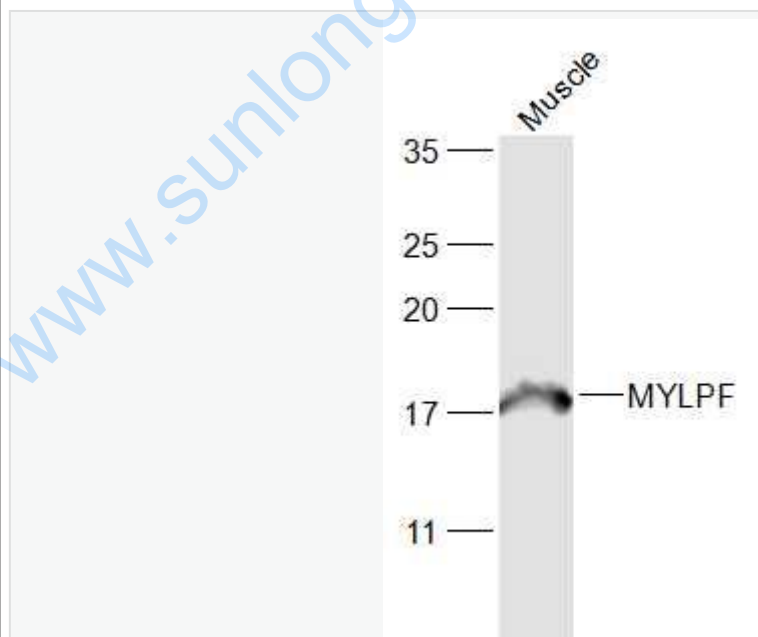
[SwissProt: P02600](#) Rat

[SwissProt: P04466](#) Rat

**Important Note:**

This product as supplied is intended for research use only, not for use in human, therapeutic or diagnostic applications.

**Picture:**



Sample:

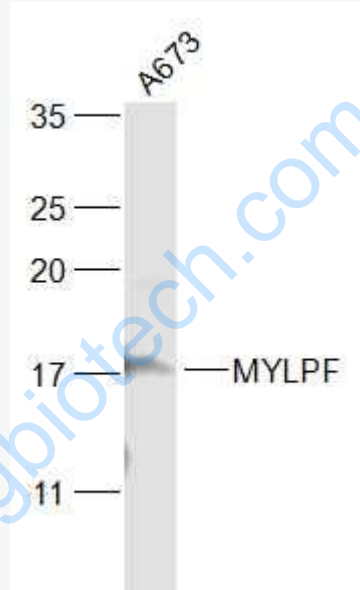
Muscle (Mouse) Lysate at 40 ug

Primary: Anti-MYLPF (SL5159R) at 1/1000 dilution

Secondary: IRDye800CW Goat Anti-Rabbit IgG at 1/20000 dilution

Predicted band size: 19 kD

Observed band size: 19 kD



Sample:

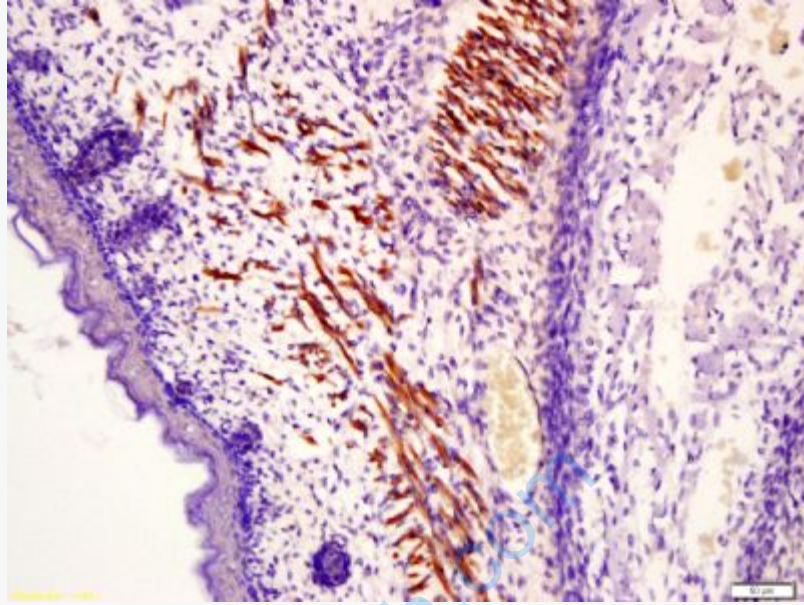
A673(Human) Cell Lysate at 30 ug

Primary: Anti-MYLPF (SL5159R) at 1/1000 dilution

Secondary: IRDye800CW Goat Anti-Rabbit IgG at 1/20000 dilution

Predicted band size: 19 kD

Observed band size: 19 kD

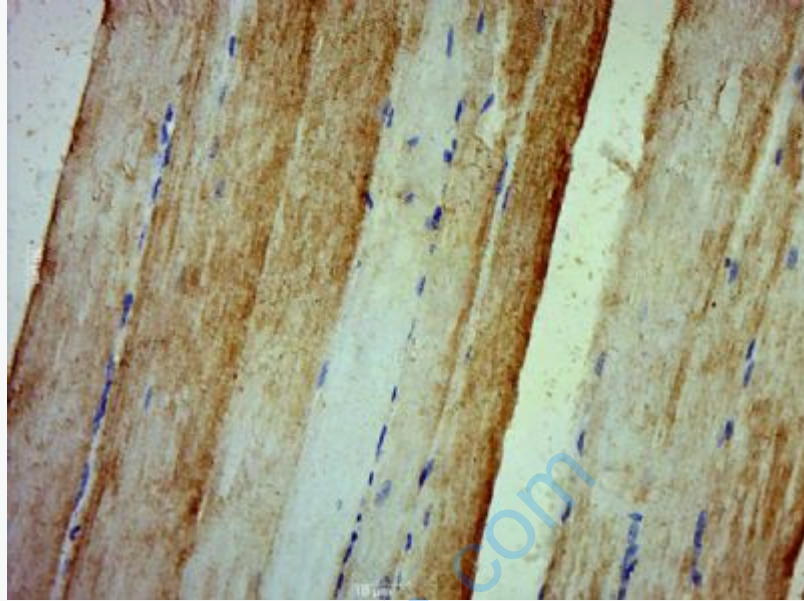


Tissue/cell: muscle of mouse embryo; 4% Paraformaldehyde-fixed and paraffin-embedded;

Antigen retrieval: citrate buffer ( 0.01M, pH 6.0 ), Boiling bathing for 15min; Block endogenous peroxidase by 3% Hydrogen peroxide for 30min; Blocking buffer (normal goat serum,C-0005) at 37°C for 20 min;

Incubation: Anti-Fast skeletal Myosin Polyclonal Antibody,

Unconjugated(SL5159R) 1:200, overnight at 4°C, followed by conjugation to the secondary antibody(SP-0023) and DAB(C-0010) staining



Paraformaldehyde-fixed, paraffin embedded (Rat skeletal muscle); Antigen retrieval by boiling in sodium citrate buffer (pH6.0) for 15min; Block endogenous peroxidase by 3% hydrogen peroxide for 20 minutes; Blocking buffer (normal goat serum) at 37°C for 30min; Antibody incubation with (MYLPF) Polyclonal Antibody, Unconjugated (SL5159R) at 1:500 overnight at 4°C, followed by a conjugated secondary (sp-0023) for 20 minutes and DAB staining.