




## Rabbit Anti-phospho-ATF4 (Ser245) antibody

SL5190R

<b>Product Name:</b>	phospho-ATF4 (Ser245)
<b>Chinese Name:</b>	磷酸化活化转录因子4抗体
<b>Alias:</b>	ATF4 (phospho S245); ATF4(Phospho-Ser245); Cyclic AMP response element binding protein 2; DNA binding protein TAXREB67; Activating Transcription Factor 4; ATF 4; ATF4 protein; CREB 2; CREB2; CREB-2; Cyclic AMP dependent transcription factor ATF 4; Tax Responsive Enhancer Element B67; TAXREB67; TXREB; ATF4 HUMAN.
<b>文献引用</b> 	<p><b>Specific References(2)</b> SL5190R has been referenced in 2 publications.</p> <p><b>[IF=4.86]</b>Jiang, Mingfang, et al. "Down-regulation of miR-384-5p Attenuates Rotenone-induced Neurotoxicity in Dopaminergic SH-SY5Y Cells Through Inhibiting Endoplasmic Reticulum Stress." American Journal of Physiology-Cell Physiology (2016): ajpcell-00226.<b>WB;Human.</b></p> <p><a href="#">PubMed:26864693</a></p> <p><b>[IF=4.15]</b>Hayashi, Keitaro, et al. "HOXB9 acts as a negative regulator of activated human T cells in response to amino acid deficiency." Immunology and Cell Biology (2016).<b>WB;Human.</b></p> <p><a href="#">PubMed:26926958</a></p>
<b>Organism Species:</b>	Rabbit
<b>Clonality:</b>	Polyclonal
<b>React Species:</b>	Human,
<b>Applications:</b>	WB=1:500-2000ELISA=1:500-1000IHC-F=1:400-800IF=1:100-500 (Paraffin sections need antigen repair) not yet tested in other applications. optimal dilutions/concentrations should be determined by the end user.

<b>Molecular weight:</b>	38kDa
<b>Cellular localization:</b>	The nucleuscytoplasmicThe cell membrane
<b>Form:</b>	Lyophilized or Liquid
<b>Concentration:</b>	1mg/ml
<b>immunogen:</b>	KLH conjugated Synthesised phosphopeptide derived from human ATF4 around the phosphorylation site of Ser245:NR(p-S)LP
<b>Lsotype:</b>	IgG
<b>Purification:</b>	affinity purified by Protein A
<b>Storage Buffer:</b>	0.01M TBS(pH7.4) with 1% BSA, 0.03% Proclin300 and 50% Glycerol.
<b>Storage:</b>	Store at -20 °C for one year. Avoid repeated freeze/thaw cycles. The lyophilized antibody is stable at room temperature for at least one month and for greater than a year when kept at -20°C. When reconstituted in sterile pH 7.4 0.01M PBS or diluent of antibody the antibody is stable for at least two weeks at 2-4 °C.
<b>PubMed:</b>	<a href="#">PubMed</a>
<b>Product Detail:</b>	<p>ATF4 is a transcription factor that was originally identified as a widely expressed mammalian DNA binding protein that could bind a tax-responsive enhancer element in the LTR of HTLV1. The encoded protein was also isolated and characterized as the cAMP-response element binding protein 2 (CREB2). The protein encoded by this gene belongs to a family of DNA-binding proteins that includes the AP1 family of transcription factors, cAMP-response element binding proteins (CREBs) and CREB-like proteins. These transcription factors share a leucine zipper region that is involved in protein-protein interactions, located C-terminal to a stretch of basic amino acids that functions as a DNA binding domain (referenced from Entrez gene).</p> <p><b>Function:</b> Transcriptional activator. Binds the cAMP response element (CRE) (consensus: 5'-GTGACGT[AC][AG]-3'), a sequence present in many viral and cellular promoters. It binds to a Tax-responsive enhancer element in the long terminal repeat of HTLV-I.</p> <p><b>Subcellular Location:</b> Cytoplasm. Cell membrane. Nucleus. Colocalizes with GABBR1 in hippocampal neuron dendritic membranes.</p> <p><b>Similarity:</b> Belongs to the bZIP family. Contains 1 bZIP domain.</p> <p><b>SWISS:</b> P18848</p> <p><b>Gene ID:</b> 468</p> <p><b>Database links:</b></p>

[Entrez Gene: 468](#) Human

[Entrez Gene: 11911](#) Mouse

[Entrez Gene: 79255](#) Rat

[NCBI: 33469976](#) Human

[Omim: 604064](#) Human

[SwissProt: P18848](#) Human

[SwissProt: Q96AQ3](#) Human

[SwissProt: Q06507](#) Mouse

[SwissProt: Q5U4B2](#) Mouse

[SwissProt: Q8CF69](#) Mouse

[SwissProt: Q9ES19](#) Rat

[Unigene: 496487](#) Human

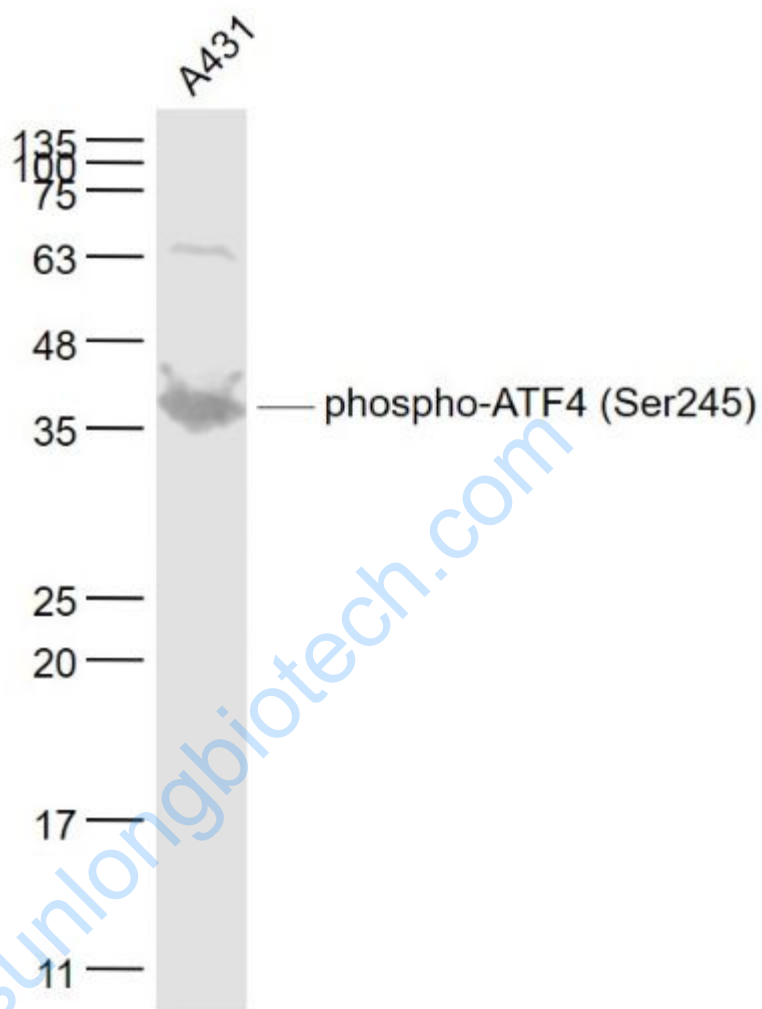
[Unigene: 641](#) Mouse

[Unigene: 2423](#) Rat

**Important Note:**

This product as supplied is intended for research use only, not for use in human, therapeutic or diagnostic applications.

Picture:



Sample:

A431(Human) Cell Lysate at 30 ug

Primary: Anti- phospho-ATF4 (Ser245) (SL5190R) at 1/1000 dilution

Secondary: IRDye800CW Goat Anti-Rabbit IgG at 1/20000 dilution

Predicted band size: 38 kD

Observed band size: 38 kD