



Rabbit Anti-phospho-ATG16A (Ser287) antibody

SL5198R

Product Name:	phospho-ATG16A (Ser287)
Chinese Name:	磷酸化自噬相关蛋白16A抗体
Alias:	phospho-ATG16L1 (Ser287); p-ATG16L1 Ser278; ATG16L1 (phospho S278); ATG16L1 (phospho Ser278); A16L1_HUMAN; APG16 like 1; APG16-like 1; APG16L; APG16L beta; ATG16 autophagy related 16 like 1; ATG16 autophagy related 16-like 1 (S. cerevisiae); ATG16 autophagy related 16-like 1; ATG16A; ATG16L; ATG16L1; Autophagy related protein 16 1; Autophagy-related protein 16-1; FLJ00045; FLJ10035; FLJ10828; FLJ22677; IBD10; OTTHUMP00000164391; OTTHUMP00000164393; OTTHUMP00000165876; OTTHUMP00000165877; WD repeat domain 30; WDR30.
Organism Species:	Rabbit
Clonality:	Polyclonal
React Species:	Human,Mouse,Rat,Cow,Horse,Rabbit,
Applications:	WB=1:500-2000ELISA=1:500-1000IHC-P=1:400-800IHC-F=1:400-800IF=1:100-500 (Paraffin sections need antigen repair) not yet tested in other applications. optimal dilutions/concentrations should be determined by the end user.
Molecular weight:	68kDa
Cellular localization:	cytoplasmicThe cell membrane
Form:	Lyophilized or Liquid
Concentration:	1mg/ml
immunogen:	KLH conjugated Synthesised phosphopeptide derived from human ATG16A/ATG16L1 around the phosphorylation site of Ser287:RR(p-S)VS
Lsotype:	IgG
Purification:	affinity purified by Protein A
Storage Buffer:	0.01M TBS(pH7.4) with 1% BSA, 0.03% Proclin300 and 50% Glycerol.
Storage:	Store at -20 °C for one year. Avoid repeated freeze/thaw cycles. The lyophilized antibody is stable at room temperature for at least one month and for greater than a year when kept at -20°C. When reconstituted in sterile pH 7.4 0.01M PBS or diluent of

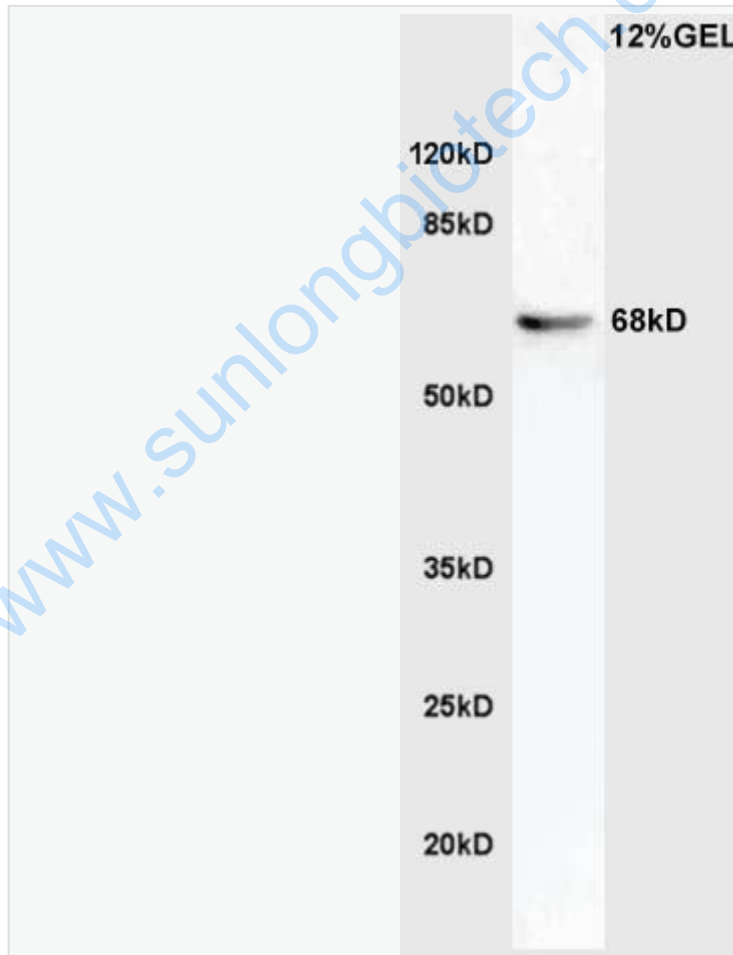
	antibody the antibody is stable for at least two weeks at 2-4 °C.
PubMed:	PubMed
Product Detail:	<p>Genetic variations in ATG16L1 are associated with susceptibility to inflammatory bowel disease type 10 (IBD10) [MIM:611081]. IBD is characterized by a chronic relapsing intestinal inflammation. IBD is subdivided into Crohn disease (CD) and ulcerative colitis phenotypes. IBD10 individuals show the phenotype characteristic to CD. It may involve any part of the gastrointestinal tract, but most frequently the terminal ileum and colon. CD is commonly classified as autoimmune disease.</p> <p>Function: Plays an essential role in autophagy (By similarity).</p> <p>Subunit: Homooligomer. Interacts with ATG5. Part of either the minor and major complexes respectively composed of 4 sets of ATG12-ATG5 and ATG16L1 (400 kDa) or 8 sets of ATG12-ATG5 and ATG16L1 (800 kDa) (By similarity).</p> <p>Subcellular Location: Cytoplasm (By similarity). Preautophagosomal structure membrane; Peripheral membrane protein (By similarity). Note=Localized to preautophagosomal structure (PAS) where it is involved in the membrane targeting of ATG5 (By similarity).</p> <p>DISEASE: Genetic variations in ATG16L1 are associated with susceptibility to inflammatory bowel disease type 10 (IBD10) [MIM:611081]. IBD is characterized by a chronic relapsing intestinal inflammation. IBD is subdivided into Crohn disease (CD) and ulcerative colitis phenotypes. IBD10 individuals show the phenotype characteristic to CD. It may involve any part of the gastrointestinal tract, but most frequently the terminal ileum and colon. CD is commonly classified as autoimmune disease.</p> <p>Similarity: Belongs to the WD repeat ATG16 family. Contains 7 WD repeats.</p> <p>SWISS: Q676U5</p> <p>Gene ID: 55054</p> <p>Database links: Entrez Gene: 55054Human Entrez Gene: 77040Mouse Entrez Gene: 363278Rat</p>

[Oimim: 610767](#)Human
[SwissProt: Q676U5](#)Human
[SwissProt: Q8C0J2](#)Mouse
[Unigene: 529322](#)Human
[Unigene: 272972](#)Mouse
[Unigene: 456099](#)Mouse

Important Note:

This product as supplied is intended for research use only, not for use in human, therapeutic or diagnostic applications.

Picture:



Sample: Brain (Mouse) Lysate at 40 ug

Primary: Anti-phospho-ATG16A(Ser287) (SL5198R) at 1/300 dilution

Secondary: HRP conjugated Goat-Anti-rabbit IgG (SL5198R) at 1/5000 dilution

Predicted band size: 68 kD

Observed band size: 68 kD

www.sunlongbiotech.com