



## Rabbit Anti-Cardiodilatin-related peptide antibody

SL5225R

<b>Product Name:</b>	Cardiodilatin-related peptide
<b>Chinese Name:</b>	心舒血管素相关肽抗体
<b>Alias:</b>	Prepronatriodilatin; ANF_HUMAN; ANF; Atrial natriuretic factor; Cardiodilatin related peptide; CDD ANF; CDP; PND; Prepronatriodilatin; Nppa; Natriuretic peptides A; Atrial natriuretic peptide; CDD-ANF; Cardiodilatin-related peptide; ANP.
<b>Organism Species:</b>	Rabbit
<b>Clonality:</b>	Polyclonal
<b>React Species:</b>	Human,Mouse,Rat,Dog,
<b>Applications:</b>	WB=1:500-2000ELISA=1:500-1000IHC-F=1:400-800IF=1:100-500 (Paraffin sections need antigen repair) not yet tested in other applications. optimal dilutions/concentrations should be determined by the end user.
<b>Molecular weight:</b>	3/17kDa
<b>Cellular localization:</b>	Secretory protein
<b>Form:</b>	Lyophilized or Liquid
<b>Concentration:</b>	1mg/ml
<b>immunogen:</b>	KLH conjugated synthetic peptide derived from human Cardiodilatin-related peptide:26-55/153
<b>Lsotype:</b>	IgG
<b>Purification:</b>	affinity purified by Protein A
<b>Storage Buffer:</b>	0.01M TBS(pH7.4) with 1% BSA, 0.03% Proclin300 and 50% Glycerol.
<b>Storage:</b>	Store at -20 °C for one year. Avoid repeated freeze/thaw cycles. The lyophilized antibody is stable at room temperature for at least one month and for greater than a year when kept at -20°C. When reconstituted in sterile pH 7.4 0.01M PBS or diluent of antibody the antibody is stable for at least two weeks at 2-4 °C.
<b>PubMed:</b>	<a href="#">PubMed</a>
<b>Product Detail:</b>	The protein encoded by this gene belongs to the natriuretic peptide family. Natriuretic peptides are implicated in the control of extracellular fluid volume and electrolyte homeostasis. This protein is synthesized as a large precursor (containing a signal peptide), which is processed to release a peptide from the N-terminus with similarity to

vasoactive peptide, cardiodilatin, and another peptide from the C-terminus with natriuretic-diuretic activity. Mutations in this gene have been associated with atrial fibrillation familial type 6. [provided by RefSeq, Sep 2009].

**Function:**

Hormone playing a key role in cardiovascular homeostasis through regulation of natriuresis, diuresis, and vasodilation. Also plays a role in female pregnancy by promoting trophoblast invasion and spiral artery remodeling in uterus. Specifically binds and stimulates the cGMP production of the NPR1 receptor. Binds the clearance receptor NPR3.

**Subunit:**

Interacts with NPR1.

**Subcellular Location:**

Secreted.

**Post-translational modifications:**

Cleaved by CORIN upon secretion to produce the functional hormone.

**DISEASE:**

Atrial fibrillation, familial, 6 (ATFB6) [MIM:612201]: A familial form of atrial fibrillation, a common sustained cardiac rhythm disturbance. Atrial fibrillation is characterized by disorganized atrial electrical activity and ineffective atrial contraction promoting blood stasis in the atria and reduces ventricular filling. It can result in palpitations, syncope, thromboembolic stroke, and congestive heart failure. Note=The disease is caused by mutations affecting the gene represented in this entry.

**Similarity:**

Belongs to the natriuretic peptide family.

**SWISS:**

P01160

**Gene ID:**

4878

**Database links:**

[Entrez Gene: 4878](#) Human

[Entrez Gene: 608289](#) Dog

[Entrez Gene: 230899](#) Mouse

[Omim: 108780](#) Human

[SwissProt: P07499](#) Dog

[SwissProt: P01160](#) Human

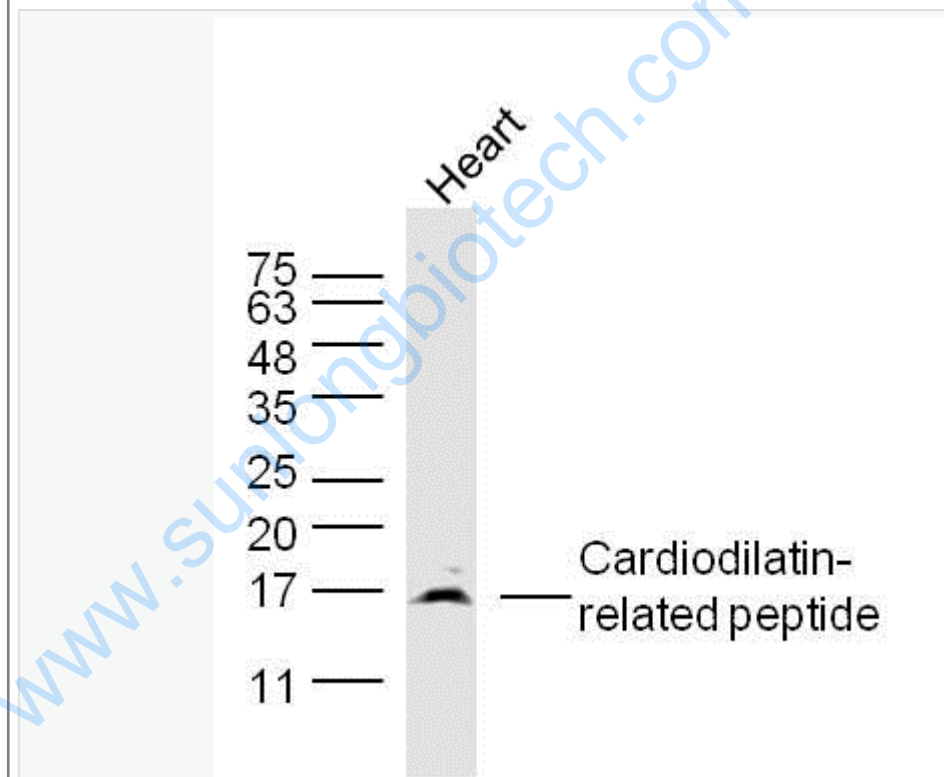
[SwissProt: P05125](#) Mouse

[Unigene: 75640](#) Human

**Important Note:**

This product as supplied is intended for research use only, not for use in human, therapeutic or diagnostic applications.

Picture:



Sample:

Heart (Mouse) Lysate at 40 ug

Primary: Anti- Cardiodilatin-related peptide (SL5225R) at 1/300 dilution

Secondary: IRDye800CW Goat Anti-Rabbit IgG at 1/20000 dilution

Predicted band size: 3/17 kD

	Observed band size: 17 kD
--	---------------------------

[www.sunlongbiotech.com](http://www.sunlongbiotech.com)