



## Rabbit Anti-phospho-Caspase 6 (Ser257) antibody

SL5240R

<b>Product Name:</b>	phospho-Caspase 6 (Ser257)
<b>Chinese Name:</b>	磷酸化半胱氨酸蛋白酶蛋白6抗体
<b>Alias:</b>	Apoptosis-related cysteine protein; Apoptosis Related Cysteine Protease; Apoptotic cysteine protease MCH2; Apoptotic protease MCH 2; Apoptotic protease MCH2; Casp 6; Casp6; Caspase 6 apoptosis related cysteine protease; Caspase 6 precursor; Caspase6; Human cysteine protease Mch2 isoform alpha; Mch 2; Mch2; CASP6 HUMAN.
<b>Organism Species:</b>	Rabbit
<b>Clonality:</b>	Polyclonal
<b>React Species:</b>	Human,Mouse,Rat,
<b>Applications:</b>	WB=1:500-2000ELISA=1:500-1000IHC-F=1:400-800IF=1:100-500 (Paraffin sections need antigen repair) not yet tested in other applications. optimal dilutions/concentrations should be determined by the end user.
<b>Molecular weight:</b>	11/33kDa
<b>Cellular localization:</b>	The nucleuscytoplasmic
<b>Form:</b>	Lyophilized or Liquid
<b>Concentration:</b>	1mg/ml
<b>immunogen:</b>	KLH conjugated Synthesised phosphopeptide derived from human Caspase 6 around the phosphorylation site of Ser257:KV(p-S)QR
<b>Lsotype:</b>	IgG
<b>Purification:</b>	affinity purified by Protein A
<b>Storage Buffer:</b>	0.01M TBS(pH7.4) with 1% BSA, 0.03% Proclin300 and 50% Glycerol.
<b>Storage:</b>	Store at -20 °C for one year. Avoid repeated freeze/thaw cycles. The lyophilized antibody is stable at room temperature for at least one month and for greater than a year when kept at -20°C. When reconstituted in sterile pH 7.4 0.01M PBS or diluent of antibody the antibody is stable for at least two weeks at 2-4 °C.
<b>PubMed:</b>	<a href="#">PubMed</a>

Caspase-6 is involved in the activation cascade of caspases responsible for apoptosis execution. Cleaves poly(ADP-ribose) polymerase in vitro, as well as lamins. Overexpression promotes programmed cell death. Subunit is composed of heterodimer of a 18 kDa (p18) and a 11 kDa (p11) subunit. Subcellular location at cytoplasmic. Cleavages by CPP32, caspase-8 or -10 generate the two active subunits. It belongs to the peptidase C14 family.

**Function:**

Involved in the activation cascade of caspases responsible for apoptosis execution. Cleaves poly(ADP-ribose) polymerase in vitro, as well as lamins. Overexpression promotes programmed cell death.

**Subunit:**

Heterotetramer that consists of two anti-parallel arranged heterodimers, each one formed by a 18 kDa (p18) and a 11 kDa (p11) subunit. Interacts with BIRC6/bruce.

**Subcellular Location:**

Cytoplasm.

**Post-translational modifications:**

Cleavages by caspase-3, caspase-8 or -10 generate the two active subunits.

**Similarity:**

Belongs to the peptidase C14A family.

**SWISS:**

P55212

**Gene ID:**

839

**Database links:**

[Entrez Gene: 839](#)Human

[Entrez Gene: 12368](#)Mouse

[Entrez Gene: 83584](#)Rat

[Omim: 601532](#)Human

[SwissProt: P55212](#)Human

[SwissProt: O08738](#)Mouse

[SwissProt: O35397](#)Rat

[Unigene: 654616](#)Human

[Unigene: 281379](#)Mouse

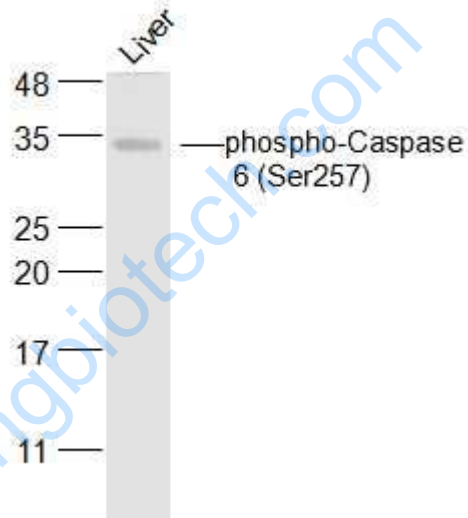
**Product Detail:**

[Unigene: 88160Rat](#)

**Important Note:**

This product as supplied is intended for research use only, not for use in human, therapeutic or diagnostic applications.

Caspase-6 与Caspase-3有38%的同源性, 属胱氨酸-天冬氨酸蛋白酶家族。在凋亡执行阶段起中心作用, 可被Caspase-7、-8、-10剪切。它是唯一一个可以剪切核纤层蛋白的Caspase。



**Picture:**

Sample:

Liver (Mouse) Lysate at 40 ug

Primary: Anti-phospho-Caspase 6 (Ser257) (SL5240R) at 1/500 dilution

Secondary: IRDye800CW Goat Anti-Rabbit IgG at 1/20000 dilution

Predicted band size: 11/33 kD

Observed band size: 33 kD