



## Rabbit Anti-phospho-CD244 (Tyr271) antibody

SL5284R

<b>Product Name:</b>	phospho-CD244 (Tyr271)
<b>Chinese Name:</b>	磷酸化CD244抗体
<b>Alias:</b>	CD244(phospho Y271); CD244(phospho-Tyr271); NKR2B4; SLAMF4; natural killer cell receptor 2B4 isoform 2 precursor; 2B4 ; C9.1; CD244 antigen; CD244 molecule natural killer cell receptor 2B4; CD244 natural killer cell receptor 2B4; F730046O15Rik; h2B4; Ly90; NAIL; Natural killer cell activation-inducing ligand; Natural killer cell receptor 2B4; NK cell activation inducing ligand; NK cell activation inducing ligand NAIL; NK cell type I receptor protein 2B4; Nmrk; Non-MHC restricted killing associated; OTTHUMP00000027884; p38; SLAM family, member 4.
<b>Organism Species:</b>	Rabbit
<b>Clonality:</b>	Polyclonal
<b>React Species:</b>	Human,Pig,Horse,Rabbit,
<b>Applications:</b>	WB=1:500-2000ELISA=1:500-1000IHC-F=1:400-800Flow-Cyt=1ug/TestIF=1:100-500 (Paraffin sections need antigen repair) not yet tested in other applications. optimal dilutions/concentrations should be determined by the end user.
<b>Molecular weight:</b>	38kDa
<b>Cellular localization:</b>	The cell membrane
<b>Form:</b>	Lyophilized or Liquid
<b>Concentration:</b>	1mg/ml
<b>immunogen:</b>	KLH conjugated Synthesised phosphopeptide derived from human CD244 around the phosphorylation site of Tyr271:TI(p-Y)ED
<b>Lsotype:</b>	IgG
<b>Purification:</b>	affinity purified by Protein A
<b>Storage Buffer:</b>	0.01M TBS(pH7.4) with 1% BSA, 0.03% Proclin300 and 50% Glycerol.
<b>Storage:</b>	Store at -20 °C for one year. Avoid repeated freeze/thaw cycles. The lyophilized antibody is stable at room temperature for at least one month and for greater than a year when kept at -20°C. When reconstituted in sterile pH 7.4 0.01M PBS or diluent of antibody the antibody is stable for at least two weeks at 2-4 °C.

**PubMed:**[PubMed](#)

CD244 is expressed on all human NK cells, a subpopulation of T cells, basophils and monocytes. CD244 activates NK cell mediated cytotoxicity, induces secretion of IFN-gamma and matrix metalloproteinases, and NK cell invasiveness. Although there have been several molecules shown to interact with CD244, the signaling mechanism of CD244-mediated activation of NK cells is still unknown. It is a high affinity receptor for CD48.

**Function:**

Modulate other receptor-ligand interactions to enhance leukocyte activation.

**Subunit:**

Interacts with CD48. Following phosphorylation, it is able to recruit PTPN11/SHP-2 and SH2D1A/SAP. Binding of SH2D1A/SAP to CD244 prevents its association with PTPN11/SHP-2.

**Subcellular Location:**

Membrane; Single-pass type I membrane protein (Potential).

**Tissue Specificity:**

Expressed in spleen, PBL, followed by lung, liver, testis and small intestine. Expressed not only in NK cells, but also on monocytes and basophils.

**Product Detail:****Similarity:**

Contains 2 Ig-like (immunoglobulin-like) domains.

**SWISS:**

Q9BZW8

**Gene ID:**

51744

**Database links:**

[Entrez Gene: 51744](#)Human

[Entrez Gene: 18106](#)Mouse

[Entrez Gene: 64025](#)Rat

[Omim: 605554](#)Human

[SwissProt: Q9BZW8](#)Human

[SwissProt: Q07763](#)Mouse

[SwissProt: Q9JLM2](#)Rat

[Unigene: 157872](#)Human

[Unigene: 2299](#)Mouse

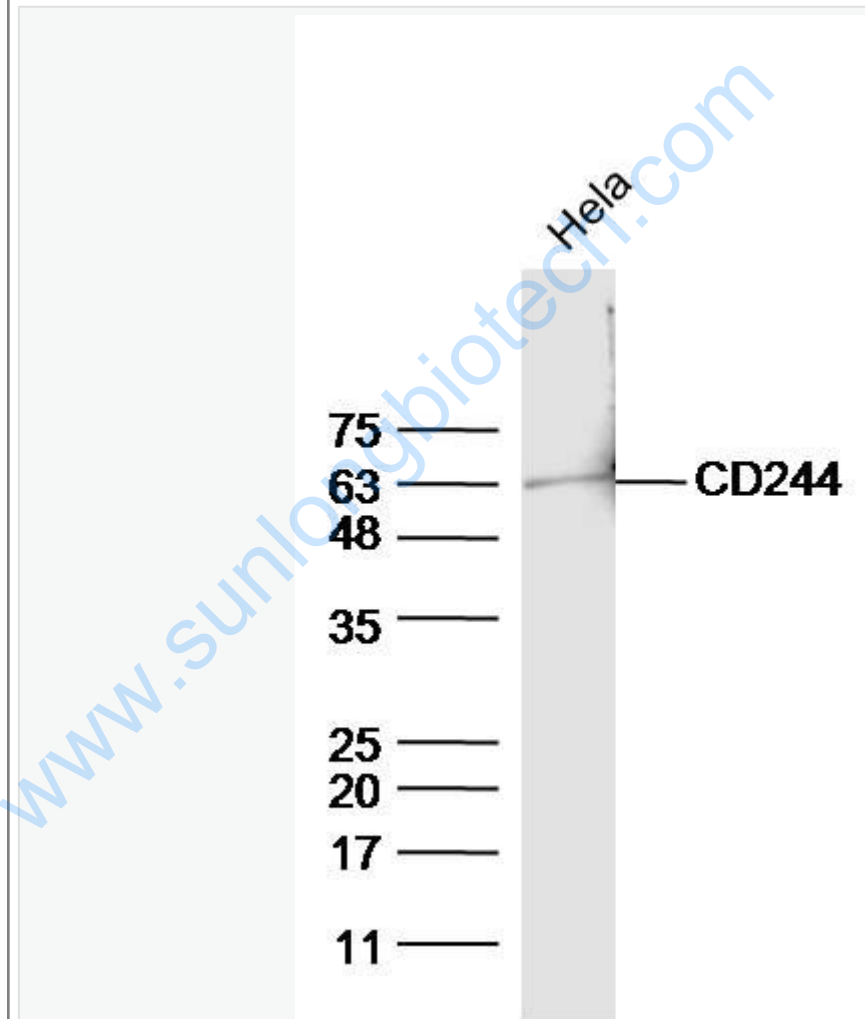
[Unigene: 113760](#)Rat

[Unigene: 53994](#)Rat

**Important Note:**

This product as supplied is intended for research use only, not for use in human, therapeutic or diagnostic applications.

Picture:



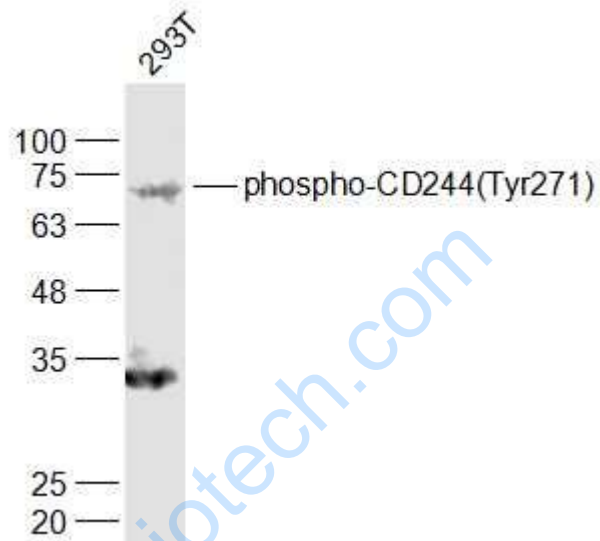
Sample: HeLa (Human) Lysate at 40 ug

Primary: Anti- phospho-CD244(Tyr271) (SL5284R) at 1/300 dilution

Secondary: IRDye800CW Goat Anti-Rabbit IgG at 1/20000 dilution

Predicted band size: 38 kD

Observed band size: 65 kD



Sample:

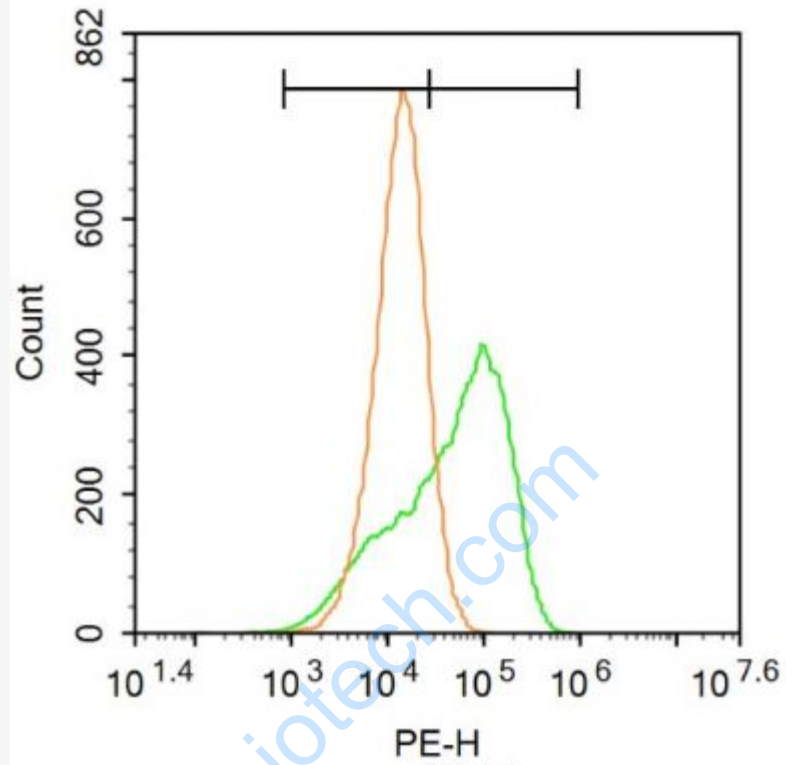
293T(Human) Cell Lysate at 30 ug

Primary: Anti-phospho-CD244(Tyr271) (SL5284R) at 1/1000 dilution

Secondary: IRDye800CW Goat Anti-Rabbit IgG at 1/20000 dilution

Predicted band size: 38 kD

Observed band size: 70 kD



Blank control: U937.

Primary Antibody (green line): Rabbit Anti-CD244 antibody (SL5284R)

Dilution:  $1\mu\text{g} / 10^6$  cells;

Isotype Control Antibody (orange line): Rabbit IgG .

Secondary Antibody : Goat anti-rabbit IgG-PE

Dilution:  $1\mu\text{g} / \text{test}$ .

#### Protocol

The cells were incubated in 5%BSA to block non-specific protein-protein interactions for 30 min at room temperature .Cells stained with Primary Antibody for 30 min at room temperature. The secondary antibody used for 40 min at room temperature. Acquisition of 20,000 events was performed.