



Rabbit Anti-Phospho-RhoA (Ser188) antibody

SL5330R

Product Name:	Phospho-RhoA (Ser188)
Chinese Name:	磷酸化RhoA蛋白抗体
Alias:	RHOA(phospho S188); RhoA (phospho S188); RhoA protein; Aplysia ras related homolog 12; ARH 12; ARH12; ARHA; H 12; Oncogene RHO H12; Ras homolog gene family member A; RHO 12; Rho A; RHO H12; RHO12; RHOH 12; RHOH12; Small GTP binding protein Rho A; Small GTP binding protein RhoA; Transforming protein Rho A; Transforming protein RhoA.
文献引用 PubMed :	Specific References(1) SL5330R has been referenced in 1 publications. [IF=2.38] Zhang, Beiru, et al. "HSF1 Relieves Amyloid- β -Induced Cardiomyocytes Apoptosis." Cell Biochemistry and Biophysics (2015): 1-9. WB;Rat. PubMed:25631374
Organism Species:	Rabbit
Clonality:	Polyclonal
React Species:	Human,Mouse,Rat,Chicken,Dog,Cow,Sheep,
Applications:	WB=1:500-2000ELISA=1:500-1000IHC-P=1:400-800IHC-F=1:400-800Flow-Cyt=1 μ g/TestIF=1:100-500 (Paraffin sections need antigen repair) not yet tested in other applications. optimal dilutions/concentrations should be determined by the end user.
Molecular weight:	21kDa
Cellular localization:	cytoplasmicThe cell membrane
Form:	Lyophilized or Liquid
Concentration:	1mg/ml
immunogen:	KLH conjugated Synthesised phosphopeptide derived from human RhoA around the phosphorylation site of Ser188:KK(p-S)GC
Lsotype:	IgG
Purification:	affinity purified by Protein A

Storage Buffer:	0.01M TBS(pH7.4) with 1% BSA, 0.03% Proclin300 and 50% Glycerol.
Storage:	Store at -20 °C for one year. Avoid repeated freeze/thaw cycles. The lyophilized antibody is stable at room temperature for at least one month and for greater than a year when kept at -20°C. When reconstituted in sterile pH 7.4 0.01M PBS or diluent of antibody the antibody is stable for at least two weeks at 2-4 °C.
PubMed:	PubMed
Product Detail:	<p>This gene encodes a member of the Rho family of small GTPases, which cycle between inactive GDP-bound and active GTP-bound states and function as molecular switches in signal transduction cascades. Rho proteins promote reorganization of the actin cytoskeleton and regulate cell shape, attachment, and motility. The protein encoded by this gene is prenylated at its C-terminus, and localizes to the cytoplasm and plasma membrane. It is thought to be important in cell locomotion. Overexpression of this gene is associated with tumor cell proliferation and metastasis. Multiple alternatively spliced variants, encoding the same protein, have been identified.</p> <p>Subunit: interacts with RGNEF. Binds PRKCL1, ROCK1 and ROCK2. Interacts with ARHGEF2, ARHGEF3, NET1 and RTKN. Interacts with PLCE1 and AKAP13. Interacts (in the constitutively activated, GTP-bound form) with DGKQ. Interacts with human respiratory syncytial virus (HRSV) protein F; this interaction facilitates virus-induced syncytium formation. Interacts with GNB2L1/RACK1; enhances RHOA activation. Interacts with PKP4; the interaction is detected at the midbody. Interacts (GTP-bound form preferentially) with PKN2; the interaction stimulates autophosphorylation and phosphorylation of PKN2.</p> <p>Similarity: Belongs to the small GTPase superfamily. Rho family.</p> <p>SWISS: P61586</p> <p>Gene ID: 387</p> <p>Database links:</p> <p>Entrez Gene: 387 Human</p> <p>Entrez Gene: 11848 Mouse</p> <p>Entrez Gene: 117273 Rat</p> <p>Omim: 165390 Human</p> <p>SwissProt: P61586 Human</p>

[SwissProt: Q9QUI0](#) Mouse

[SwissProt: P61589](#) Rat

[Unigene: 247077](#) Human

[Unigene: 757](#) Mouse

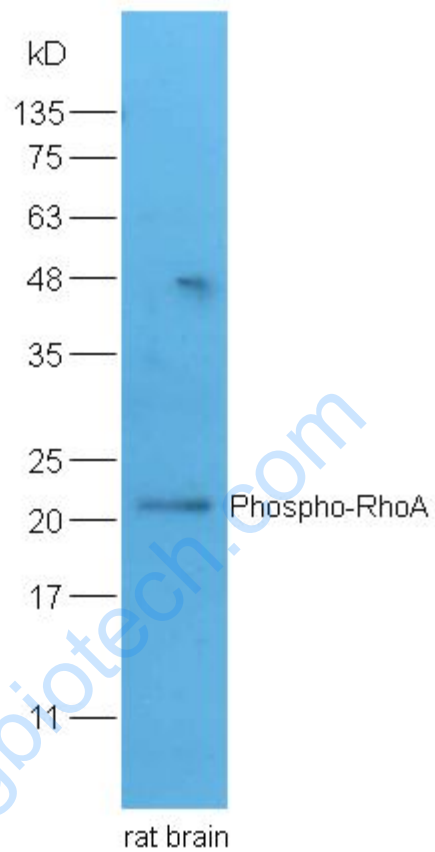
[Unigene: 107401](#) Rat

Important Note:

This product as supplied is intended for research use only, not for use in human, therapeutic or diagnostic applications.

RhoA蛋白主要分布在细胞质和The cell membrane,RhoA蛋白家族是控制Cytoskeleton蛋白组合、调节基因表达等细胞活动过程中的关键Signal transduction成分。通常,RhoA通过激活其下游的Rho连接激酶(Rho associated kinase,ROK)而起作用。在调节Cytoskeleton组建的过程中,RhoA与其作用对象均在胞质内。

Picture:



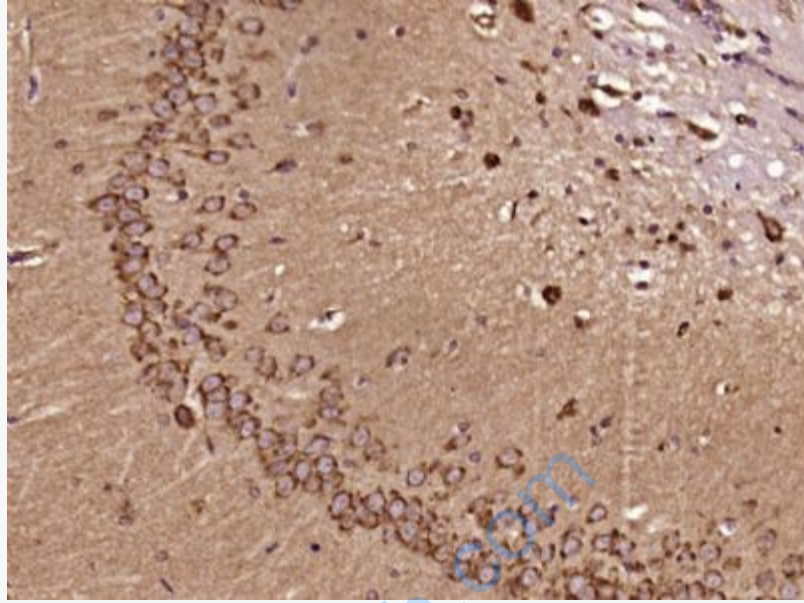
Sample: Brain (Rat) Lysate at 40 ug

Primary: Anti-Phospho-RhoA(Ser188) (SL5330R) at 1/300 dilution

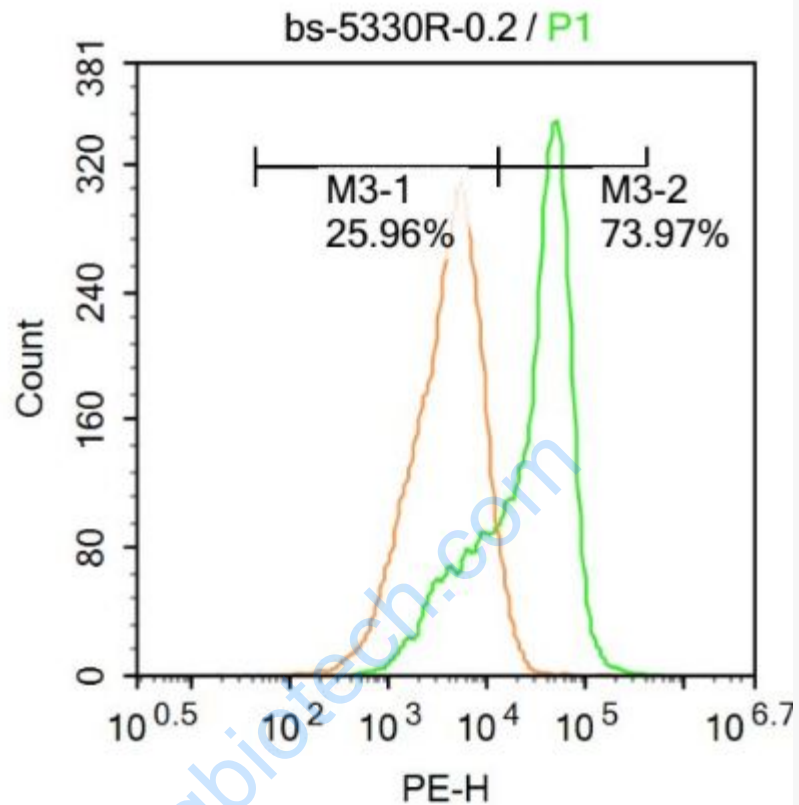
Secondary: HRP conjugated Goat-Anti-rabbit IgG (SL5330R) at 1/5000 dilution

Predicted band size: 21 kD

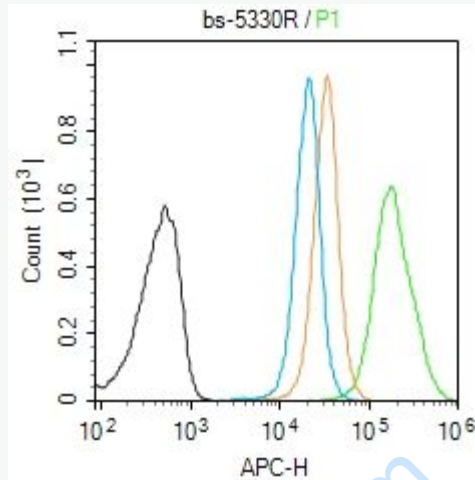
Observed band size: 21 kD



Paraformaldehyde-fixed, paraffin embedded (Rat brain); Antigen retrieval by boiling in sodium citrate buffer (pH6.0) for 15min; Block endogenous peroxidase by 3% hydrogen peroxide for 20 minutes; Blocking buffer (normal goat serum) at 37°C for 30min; Antibody incubation with (Phospho-RhoA(Ser188)) Polyclonal Antibody, Unconjugated (SL5330R) at 1:400 overnight at 4°C, followed by operating according to SP Kit(Rabbit) (sp-0023) instructions and DAB staining.



Molt-4 cells were fixed with 4% PFA for 10min at room temperature, permeabilized with 20% PBST for 20 min at room temperature, and incubated in 5% BSA blocking buffer for 30 min at room temperature. Cells were then stained with Phospho-RhoA Antibody(SL5330R) at 1:100 dilution in blocking buffer and incubated for 30 min at room temperature, washed twice with 2% BSA in PBS, followed by secondary antibody incubation for 40 min at room temperature. Acquisitions of 20,000 events were performed. Cells stained with primary antibody (green), and isotype control (orange).



Blank control (Black line): Molt4 (Black).

Primary Antibody (green line): Rabbit Anti-Phospho-RhoA (Ser188) antibody (SL5330R)

Dilution: 3 μ g /10⁶ cells;

Isotype Control Antibody (orange line): Rabbit IgG .

Secondary Antibody (white blue line): Goat anti-rabbit IgG-AF647

Dilution: 3 μ g /test.

Protocol

The cells were fixed with 4% PFA (10min at room temperature) and then permeabilized with PBST for 20 min at room temperature. The cells were then incubated in 5%BSA to block non-specific protein-protein interactions for 30 min at room temperature .Cells stained with Primary Antibody for 30 min at room temperature. The secondary antibody used for 40 min at room temperature.

Acquisition of 20,000 events was performed.