



Rabbit Anti-phospho-IL-1R1 (Tyr496) antibody

SL5394R

Product Name:	phospho-IL-1R1 (Tyr496)
Chinese Name:	磷酸化白介素1受体1抗体
Alias:	IL1 Receptor I (phospho Tyr496); Antigen CD121a; CD121 antigen-like family member A; CD121A; CD121a antigen; D2S1473; IL 1; IL 1R 1; IL 1R alpha; IL 1RT1; IL-1R-1; IL-1R-alpha; IL-1RT-1; IL-1RT1; IL1 inhibitor; IL1R; IL1R1; IL1R1_HUMAN; IL1RA; IL1RN; IL1RT1; Interleukin 1 receptor alpha type 1; Interleukin 1 receptor antagonist protein (IRAP); Interleukin 1 receptor type I; Interleukin receptor 1; Interleukin-1 receptor alpha; Interleukin-1 receptor type 1; Interleukin-1 receptor type I; P80; IL1 Receptor I; IL-1 Receptor I; Interleukin-1 receptor type 1, soluble form; IL-1 sRI.
Organism Species:	Rabbit
Clonality:	Polyclonal
React Species:	Human, Mouse, Rat, Dog, Pig, Horse,
Applications:	WB=1:500-2000ELISA=1:500-1000IHC-P=1:400-800IHC-F=1:400-800Flow-Cyt=1µg/TestICC=1:100-500IF=1:100-500 (Paraffin sections need antigen repair) not yet tested in other applications. optimal dilutions/concentrations should be determined by the end user.
Molecular weight:	63kDa
Cellular localization:	The cell membrane Secretory protein
Form:	Lyophilized or Liquid
Concentration:	1mg/ml
immunogen:	KLH conjugated Synthesised phosphopeptide derived from human IL-1R1 around the phosphorylation site of Tyr496:QD(p-Y)EK
Lsotype:	IgG
Purification:	affinity purified by Protein A
Storage Buffer:	0.01M TBS(pH7.4) with 1% BSA, 0.03% Proclin300 and 50% Glycerol.
Storage:	Store at -20 °C for one year. Avoid repeated freeze/thaw cycles. The lyophilized antibody is stable at room temperature for at least one month and for greater than a year when kept at -20°C. When reconstituted in sterile pH 7.4 0.01M PBS or diluent of

	antibody the antibody is stable for at least two weeks at 2-4 °C.
PubMed:	PubMed
Product Detail:	<p>The protein encoded by this gene is a cytokine receptor that belongs to the interleukin 1 receptor family. This protein is a receptor for interleukin alpha (IL1A), interleukin beta (IL1B), and interleukin 1 receptor, type I(IL1R1/IL1RA). It is an important mediator involved in many cytokine induced immune and inflammatory responses. This gene along with interleukin 1 receptor, type II(IL1R2), interleukin 1 receptor-like 2 (IL1RL2), and interleukin 1 receptor-like 1 (IL1RL1) form a cytokine receptor gene cluster in a region mapped to chromosome 2q12.</p> <p>Function: Receptor for IL1A, IL1B and IL1RN. After binding to interleukin-1 associates with the coreceptor IL1RAP to form the high affinity interleukin-1 receptor complex which mediates interleukin-1-dependent activation of NF-kappa-B, MAPK and other pathways. Signaling involves the recruitment of adapter molecules such as TOLLIP, MYD88, and IRAK1 or IRAK2 via the respective TIR domains of the receptor/coreceptor subunits. Binds ligands with comparable affinity and binding of antagonist IL1RN prevents association with IL1RAP to form a signaling complex.</p> <p>Subunit: The interleukin-1 receptor complex is a heterodimer of IL1R1 and IL1RAP.</p> <p>Subcellular Location: Membrane; Single-pass type I membrane protein. Cell membrane (Probable). Secreted.</p> <p>Post-translational modifications: A soluble form (sIL1R1) is probably produced by proteolytic cleavage at the cell surface (shedding).</p> <p>Similarity: Belongs to the interleukin-1 receptor family. Contains 3 Ig-like C2-type (immunoglobulin-like) domains. Contains 1 TIR domain.</p> <p>SWISS: P14778</p> <p>Gene ID: 3554</p> <p>Database links: Entrez Gene: 3554Human Entrez Gene: 16177Mouse</p>

[Entrez Gene: 25663](#)Rat

[Omim: 147810](#)Human

[SwissProt: P14778](#)Human

[SwissProt: P13504](#)Mouse

[SwissProt: Q02955](#)Rat

[Unigene: 516249](#)Human

[Unigene: 701982](#)Human

[Unigene: 896](#)Mouse

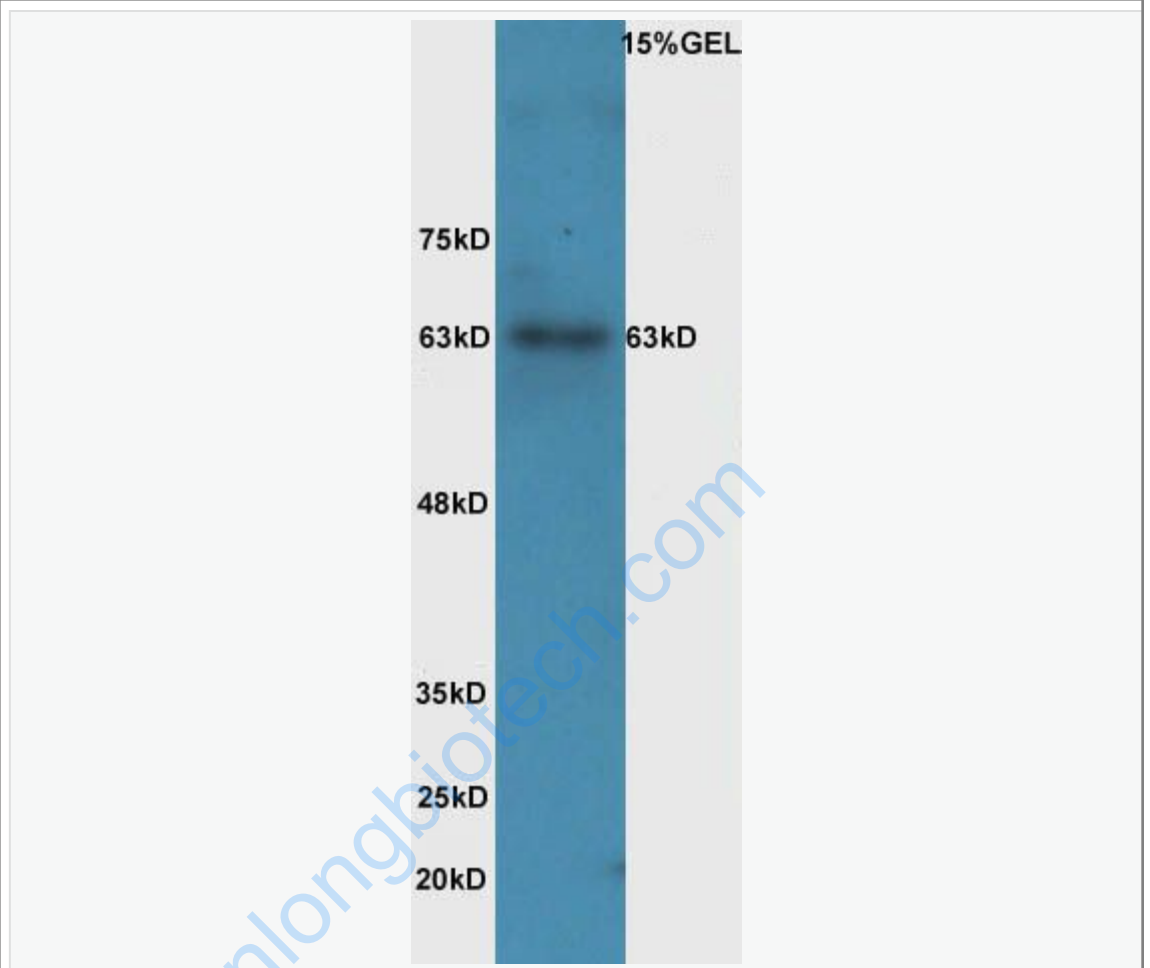
[Unigene: 9758](#)Rat

Important Note:

This product as supplied is intended for research use only, not for use in human, therapeutic or diagnostic applications.

IL-1R I 属于新的信号受体家族TollSignal transduction通路蛋白, IL-1R I 在免疫和炎症反应的研究中占重要地位, 是在很多感染、炎症性致病机制中起决定性作用的cell factor, 几乎可作用于全身各种细胞, IL-1与IL-1R1的结合可导致大量与免疫反应和炎症相关基因的表达, 包括cell factor、cell factor受体、急性期反应物、生长因子、胞外基质、粘附分子等。IL-1R1/NF- κ B信号通路是机体免疫反应中十分重要的组成部分。白介素1受体I型 Interleukin 1 receptor I(IL-1RI)

Picture:



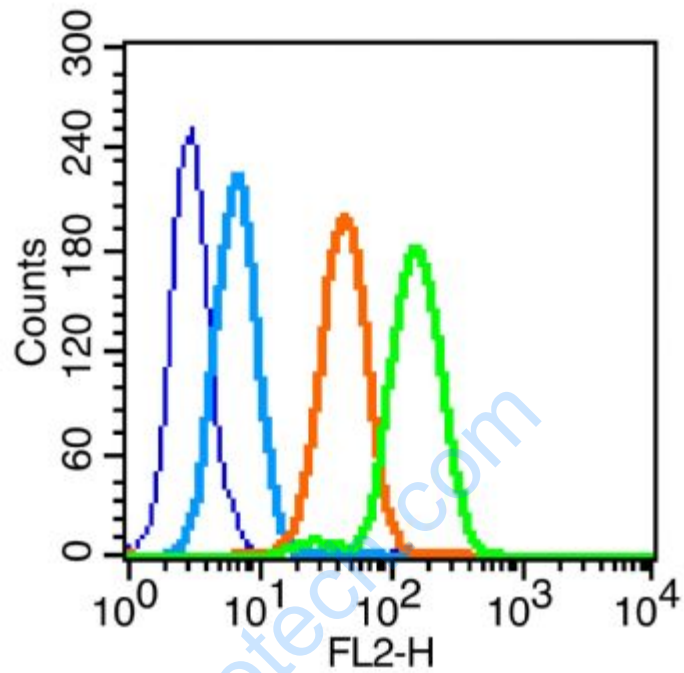
Sample: Intestine (Mouse) Lysate at 40 ug

Primary: Anti-phospho-IL-1R1(Tyr496) (SL5394R) at 1/300 dilution

Secondary: HRP conjugated Goat-Anti-rabbit IgG (SL5394R) at 1/5000 dilution

Predicted band size: 63 kD

Observed band size: 63 kD



Blank control (blue line): MCF7 (fixed with 70% methanol overnight at 4°C).

Primary Antibody (green line): Rabbit Anti-phospho-IL-1R1(Tyr496)antibody (SL5394R), Dilution: 1µg /10⁶ cells;

Isotype Control Antibody (orange line): Rabbit IgG .

Secondary Antibody (white blue line): Goat anti-rabbit IgG-PE, Dilution: 1µg /test.