



Rabbit Anti-phospho-IL-7Ra (Tyr449) antibody

SL5395R

Product Name:	phospho-IL-7Ra (Tyr449)
Chinese Name:	磷酸化白细胞介素-7受体 α 抗体
Alias:	IL7R alpha (phospho Y449); CD 127; CD127; CD127 antigen; CDW127; IL 7R alpha; IL 7R; IL-7 receptor subunit alpha; IL-7R subunit alpha; IL-7R-alpha; IL-7RA; IL7R; IL7RA; IL7RA_HUMAN; IL7Ralpha; ILRA; Interleukin 7 receptor alpha chain; Interleukin 7 receptor; Interleukin 7 receptor isoform H5 6; Interleukin-7 receptor subunit alpha.
Organism Species:	Rabbit
Clonality:	Polyclonal
React Species:	Human,Mouse,Rat,Chicken,Dog,Pig,Cow,Horse,
Applications:	WB=1:500-2000ELISA=1:500-1000IHC-P=1:400-800IHC-F=1:400-800Flow-Cyt=2ug/TestIF=1:100-500 (Paraffin sections need antigen repair) not yet tested in other applications. optimal dilutions/concentrations should be determined by the end user.
Molecular weight:	48kDa
Cellular localization:	The cell membraneSecretory protein
Form:	Lyophilized or Liquid
Concentration:	1mg/ml
immunogen:	KLH conjugated Synthesised phosphopeptide derived from human IL-7Ra around the phosphorylation site of Tyr449:EA(p-Y)VT
Lsotype:	IgG
Purification:	affinity purified by Protein A
Storage Buffer:	0.01M TBS(pH7.4) with 1% BSA, 0.03% Proclin300 and 50% Glycerol.
Storage:	Store at -20 °C for one year. Avoid repeated freeze/thaw cycles. The lyophilized antibody is stable at room temperature for at least one month and for greater than a year when kept at -20°C. When reconstituted in sterile pH 7.4 0.01M PBS or diluent of antibody the antibody is stable for at least two weeks at 2-4 °C.
PubMed:	PubMed
Product Detail:	The protein encoded by this gene is a receptor for interleukine 7 (IL7). The function of

this receptor requires the interleukin 2 receptor, gamma chain (IL2RG), which is a common gamma chain shared by the receptors of various cytokines, including interleukine 2, 4, 7, 9, and 15. This protein has been shown to play a critical role in the V(D)J recombination during lymphocyte development. This protein is also found to control the accessibility of the TCR gamma locus by STAT5 and histone acetylation. Knockout studies in mice suggested that blocking apoptosis is an essential function of this protein during differentiation and activation of T lymphocytes. The functional defects in this protein may be associated with the pathogenesis of the severe combined immunodeficiency (SCID).

Function:

Receptor for interleukin-7. Also acts as a receptor for thymic stromal lymphopietin (TSLP).

Subunit:

The IL7 receptor is an heterodimer of IL7R and IL2RG. The TSLP receptor is an heterodimer of CRLF2 and IL7R.

Subcellular Location:

Isoform 1: Cell membrane; Single-pass type I membrane protein. Isoform 3: Cell membrane; Single-pass type I membrane protein. Isoform 4: Secreted.

Post-translational modifications:

N-glycosylated IL-7Ralpha binds IL7 300-fold more tightly than the unglycosylated form.

DISEASE:

Defects in IL7R are a cause of severe combined immunodeficiency autosomal recessive T-cell-negative/B-cell-positive/NK-cell-positive (T(-)B(+)NK(+)) SCID . A form of severe combined immunodeficiency (SCID), a genetically and clinically heterogeneous group of rare congenital disorders characterized by impairment of both humoral and cell-mediated immunity, leukopenia, and low or absent antibody levels. Patients present in infancy recurrent, persistent infections by opportunistic organisms. The common characteristic of all types of SCID is absence of T-cell-mediated cellular immunity due to a defect in T-cell development.

Similarity:

Belongs to the type I cytokine receptor family. Type 4 subfamily. Contains 1 fibronectin type-III domain.

SWISS:

P16871

Gene ID:

3575

Database links:

[Entrez Gene: 3575](#)Human

[Entrez Gene: 16197](#)Mouse

[Entrez Gene: 294797](#)Rat

[Omim: 146661](#)Human

[SwissProt: P16871](#)Human

[SwissProt: P16872](#)Mouse

[SwissProt: 224662](#)Rat

[Unigene: 591742](#)Human

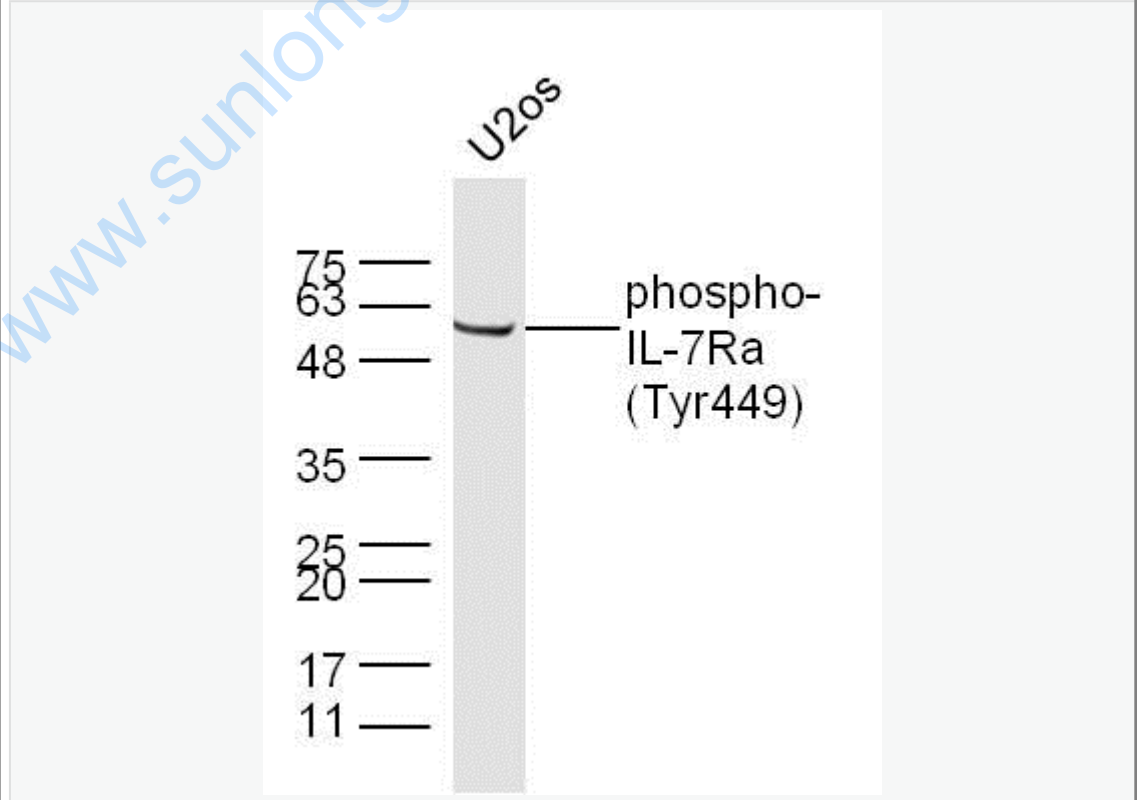
[Unigene: 635723](#)Human

[Unigene: 389](#)Mouse

Important Note:

This product as supplied is intended for research use only, not for use in human, therapeutic or diagnostic applications.

Picture:



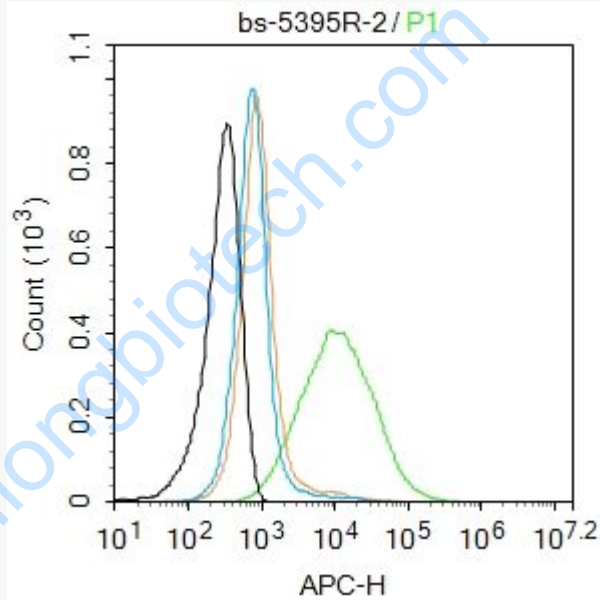
Sample: U20s Cell (Human) Lysate at 40 ug

Primary: Anti-phospho-IL-7Ra (Tyr449) (SL5395R) at 1/300 dilution

Secondary: IRDye800CW Goat Anti-Rabbit IgG at 1/20000 dilution

Predicted band size: 48 kD

Observed band size: 55 kD



Blank control: Hela.

Primary Antibody (green line): Rabbit Anti-CD127 antibody (SL5395R)

Dilution: $2\mu\text{g} / 10^6$ cells;

Isotype Control Antibody (orange line): Rabbit IgG .

Secondary Antibody : Goat anti-rabbit IgG-AF647

Dilution: $1\mu\text{g} / \text{test}$.

Protocol

The cells were incubated in 5%BSA to block non-specific protein-protein

interactions for 30 min at at room temperature .Cells stained with Primary Antibody for 30 min at room temperature. The secondary antibody used for 40 min at room temperature. Acquisition of 20,000 events was performed.

www.sunlongbiotech.com