



## Rabbit Anti-phospho-CK18 (Ser60) antibody

SL5405R

|                               |   |
|-------------------------------|---|
| <b>Product Name:</b>          | phospho-CK18 (Ser60)  |
| <b>Chinese Name:</b>          | 磷酸化细胞角蛋白18抗体  |
| <b>Alias:</b>                 | Cytokeratin 18 (phospho S60); p-Cytokeratin 18 (phospho S60); Cell proliferation inducing gene 46 protein; Cell proliferation inducing protein 46; Cell proliferation-inducing gene 46 protein; CK 18; CK-18; CK18; CYK 18; CYK18; Cytokeratin 18; Cytokeratin endo B; Cytokeratin-18; Cytokeratin18; K 18; K18; K1C18_HUMAN; Keratin 18; Keratin D; Keratin type I cytoskeletal 18; keratin, type I cytoskeletal 18; Keratin-18; Keratin18; Kerd; KRT18. |
| <b>Organism Species:</b>      | Rabbit  |
| <b>Clonality:</b>             | Polyclonal  |
| <b>React Species:</b>         | Human,Mouse,Rat,  |
| <b>Applications:</b>          | WB=1:500-2000ELISA=1:500-1000IHC-P=1:400-800IHC-F=1:400-800IF=1:100-500 (Paraffin sections need antigen repair)<br>not yet tested in other applications.<br>optimal dilutions/concentrations should be determined by the end user.  |
| <b>Molecular weight:</b>      | 48kDa   |
| <b>Cellular localization:</b> | The nucleuscytoplasmic  |
| <b>Form:</b>                  | Lyophilized or Liquid   |
| <b>Concentration:</b>         | 1mg/ml  |
| <b>immunogen:</b>             | KLH conjugated Synthesised phosphopeptide derived from human CK18 around the phosphorylation site of Ser60:MG(p-S)GG  |
| <b>Lsotype:</b>               | IgG   |
| <b>Purification:</b>          | affinity purified by Protein A  |
| <b>Storage Buffer:</b>        | 0.01M TBS(pH7.4) with 1% BSA, 0.03% Proclin300 and 50% Glycerol.  |
| <b>Storage:</b>               | Store at -20 °C for one year. Avoid repeated freeze/thaw cycles. The lyophilized antibody is stable at room temperature for at least one month and for greater than a year when kept at -20°C. When reconstituted in sterile pH 7.4 0.01M PBS or diluent of antibody the antibody is stable for at least two weeks at 2-4 °C.   |
| <b>PubMed:</b>                | <a href="#">PubMed</a>  |

KRT18 encodes the type I intermediate filament chain keratin 18. Keratin 18, together with its filament partner keratin 8, are perhaps the most commonly found members of the intermediate filament gene family. They are expressed in single layer epithelial tissues of the body. Mutations in this gene have been linked to cryptogenic cirrhosis. Two transcript variants encoding the same protein have been found for this gene. [provided by RefSeq].

**Function:**

When phosphorylated, plays a role in filament reorganization. Involved in the delivery of mutated CFTR to the plasma membrane. Involved in the uptake of thrombin-antithrombin complexes by hepatic cells (By similarity). Together with KRT8, is involved in interleukin-6 (IL-6)-mediated barrier protection.

**Subunit:**

Heterotetramer of two type I and two type II keratins. KRT18 associates with KRT8. Interacts with the thrombin-antithrombin complex (By similarity). Interacts with PNN, HCV core protein and mutated CFTR. Interacts with YWHAE, YWHAH and YWHAZ only when phosphorylated. Interacts with DNAJB6, TCHP and TRADD.

**Subcellular Location:**

Cytoplasm, perinuclear region. Nucleus, nucleolus.

**Tissue Specificity:**

Expressed in colon, placenta, liver and very weakly in exocervix. Increased expression observed in lymph nodes of breast carcinoma.

**Post-translational modifications:**

Phosphorylation increases by IL-6.

Proteolytically cleaved by caspases during epithelial cell apoptosis. Cleavage occurs at Asp-231 by either caspase-3, caspas-6 or caspase-7.

O-glycosylated at multiple sites; glycans consist of single N-acetylglucosamine residue.

**DISEASE:**

Defects in KRT18 are a cause of cirrhosis (CIRRH) [MIM:215600].

**Similarity:**

Belongs to the intermediate filament family.

**SWISS:**

P05783

**Gene ID:**

3875

**Database links:**

**Product Detail:**

[Entrez Gene: 506480](#)Cow

[Entrez Gene: 3875](#)Human

[Entrez Gene: 16668](#)Mouse

[Entrez Gene: 294853](#)Rat

[Omin: 148070](#)Human

[SwissProt: P05783](#)Human

[SwissProt: P05784](#)Mouse

[SwissProt: Q5BJY9](#)Rat

[Unigene: 406013](#)Human

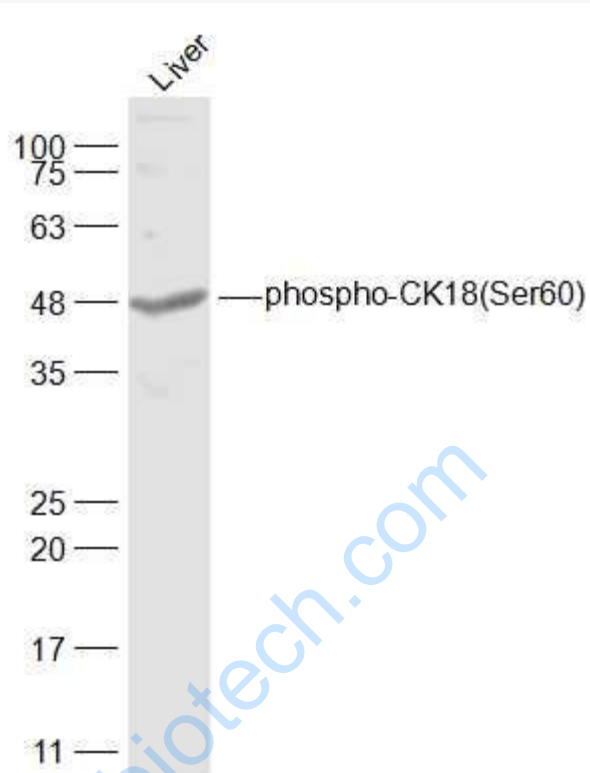
[Unigene: 22479](#)Mouse

[Unigene: 103924](#)Rat

**Important Note:**

This product as supplied is intended for research use only, not for use in human, therapeutic or diagnostic applications.

结构蛋白 (Structural Proteins) 常用于 Tumour 细胞的分化、增殖及转移方面的研究。



**Picture:**

Sample:

Liver (Mouse) Lysate at 40 ug

Primary: Anti-phospho-CK18(Ser60) (SL5405R) at 1/1000 dilution

Secondary: IRDye800CW Goat Anti-Rabbit IgG at 1/20000 dilution

Predicted band size: 48 kD

Observed band size: 48 kD

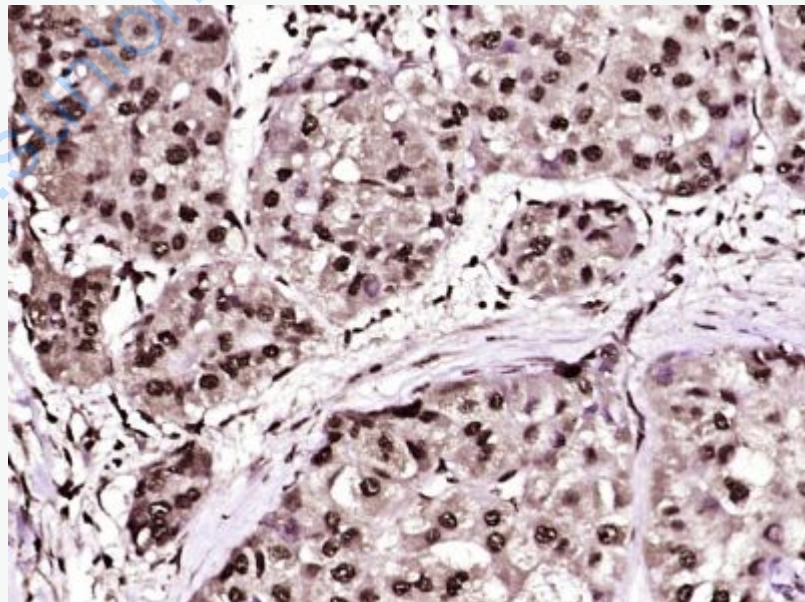


Paraformaldehyde-fixed, paraffin embedded (Human pancreatic cancer); Antigen retrieval by boiling in sodium citrate buffer (pH6.0) for 15min; Block endogenous peroxidase by 3% hydrogen peroxide for 20 minutes; Blocking buffer (normal goat

serum) at 37°C for 30min; Antibody incubation with (phospho-CK18(Ser60)) Polyclonal Antibody, Unconjugated (SL5405R) at 1:400 overnight at 4°C, followed by operating according to SP Kit(Rabbit) (sp-0023) instructions and DAB staining.

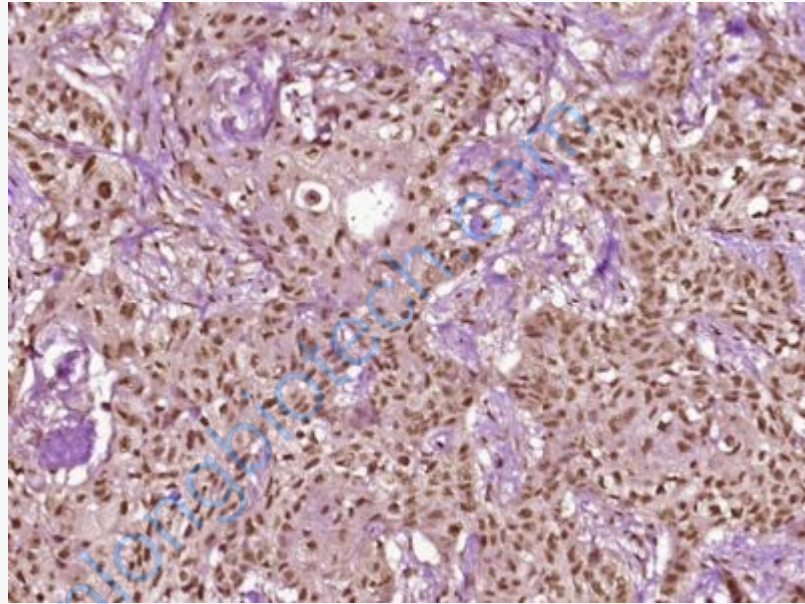


Paraformaldehyde-fixed, paraffin embedded (Human breast cancer); Antigen retrieval by boiling in sodium citrate buffer (pH6.0) for 15min; Block endogenous peroxidase by 3% hydrogen peroxide for 20 minutes; Blocking buffer (normal goat serum) at 37°C for 30min; Antibody incubation with (phospho-CK18(Ser60)) Polyclonal Antibody, Unconjugated (SL5405R) at 1:400 overnight at 4°C, followed by operating according to SP Kit(Rabbit) (sp-0023) instructions and DAB staining.



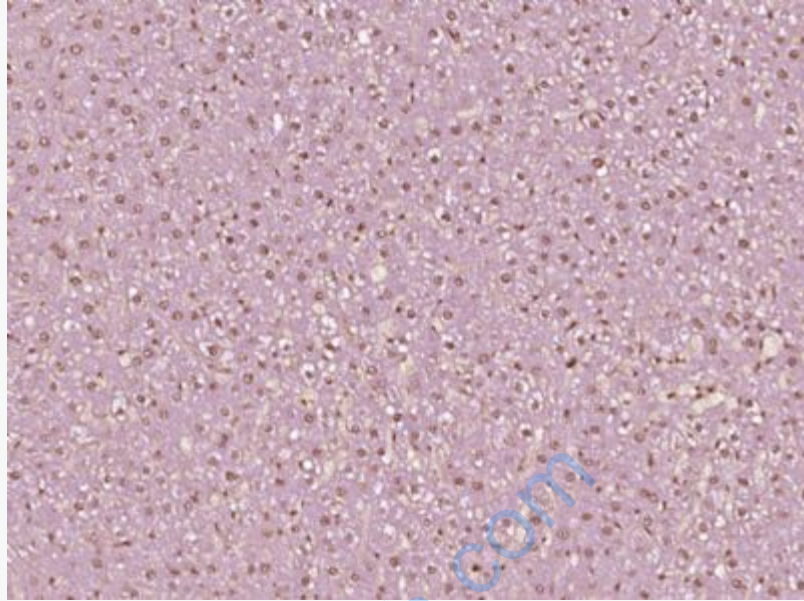
Paraformaldehyde-fixed, paraffin embedded (Human liver cancer); Antigen retrieval by boiling in sodium citrate buffer (pH6.0) for 15min; Block endogenous peroxidase

by 3% hydrogen peroxide for 20 minutes; Blocking buffer (normal goat serum) at 37°C for 30min; Antibody incubation with (phospho-CK18(Ser60)) Polyclonal Antibody, Unconjugated (SL5405R) at 1:400 overnight at 4°C, followed by operating according to SP Kit(Rabbit) (sp-0023) instructions and DAB staining.



Paraformaldehyde-fixed, paraffin embedded (Human stomach carcinoma); Antigen retrieval by boiling in sodium citrate buffer (pH6.0) for 15min; Block endogenous peroxidase by 3% hydrogen peroxide for 20 minutes; Blocking buffer (normal goat serum) at 37°C for 30min; Antibody incubation with (phospho-CK18(Ser60)) Polyclonal Antibody, Unconjugated (SL5405R) at 1:400 overnight at 4°C, followed by operating according to SP Kit(Rabbit) (sp-0023) instructions and DAB staining.





Paraformaldehyde-fixed, paraffin embedded (Rat liver); Antigen retrieval by boiling in sodium citrate buffer (pH6.0) for 15min; Block endogenous peroxidase by 3% hydrogen peroxide for 20 minutes; Blocking buffer (normal goat serum) at 37°C for 30min; Antibody incubation with (phospho-CK18(Ser60)) Polyclonal Antibody, Unconjugated (SL5405R) at 1:400 overnight at 4°C, followed by operating according to SP Kit(Rabbit) (sp-0023) instructions and DAB staining.