



## Rabbit Anti-phospho-ICAM1 (Tyr512) antibody

SL5450R

<b>Product Name:</b>	phospho-ICAM1 (Tyr512)
<b>Chinese Name:</b>	磷酸化细胞间粘附分子1抗体
<b>Alias:</b>	BB2; CD54 antigen; ICAM1; ICAM 1; ICAM-1; Cell surface glycoprotein P3.58; Human rhinovirus receptor; ICAM 1; Intercellular adhesion molecule 1; Major group rhinovirus receptor; MALA2; MyD10; P3.58; Surface antigen of activated B cells; ICAM1_HUMAN.
<b>Organism Species:</b>	Rabbit
<b>Clonality:</b>	Polyclonal
<b>React Species:</b>	Human,
<b>Applications:</b>	WB=1:500-2000ELISA=1:500-1000IHC-P=1:400-800IHC-F=1:400-800IF=1:100-500 (Paraffin sections need antigen repair) not yet tested in other applications. optimal dilutions/concentrations should be determined by the end user.
<b>Molecular weight:</b>	55kDa
<b>Cellular localization:</b>	The cell membrane
<b>Form:</b>	Lyophilized or Liquid
<b>Concentration:</b>	1mg/ml
<b>immunogen:</b>	KLH conjugated Synthesised phosphopeptide derived from human ICAM1 around the phosphorylation site of Tyr512:KK(p-Y)RL
<b>Lsotype:</b>	IgG
<b>Purification:</b>	affinity purified by Protein A
<b>Storage Buffer:</b>	0.01M TBS(pH7.4) with 1% BSA, 0.03% Proclin300 and 50% Glycerol.
<b>Storage:</b>	Store at -20 °C for one year. Avoid repeated freeze/thaw cycles. The lyophilized antibody is stable at room temperature for at least one month and for greater than a year when kept at -20°C. When reconstituted in sterile pH 7.4 0.01M PBS or diluent of antibody the antibody is stable for at least two weeks at 2-4 °C.
<b>PubMed:</b>	<a href="#">PubMed</a>
<b>Product Detail:</b>	ICAM proteins are ligands for the leukocyte adhesion LFA-1 protein (Integrin alpha-L/beta-2). Subcellular Located at Membrane; single-pass type I membrane protein.

Tissue Specificified Expressed at low level on a subpopulation of lymphocytes, macrophages, and endothelial cells, but is strongly induced on these cells, and on fibroblasts and epithelial cells. [PTM] Monoubiquitinated, which is promoted by MARCH9 and leads to endocytosis (By similarity). It belongs to the immunoglobulin superfamily. ICAM family.

**Function:**

ICAM proteins are ligands for the leukocyte adhesion protein LFA-1 (integrin alpha-L/beta-2). During leukocyte trans-endothelial migration, ICAM1 engagement promotes the assembly of endothelial apical cups through ARHGEF26/SGEF and RHOG activation. In case of rhinovirus infection acts as a cellular receptor for the virus.

**Subunit:**

Homodimer (Probable). Interacts with human herpesvirus 8 MIR2 protein (Probable). Interacts with MUC1 and promotes cell aggregation in epithelial cells. Interacts with ARHGEF26/SGEF. Binds to coxsackievirus A21 capsid proteins and acts as a receptor for this virus.

**Subcellular Location:**

Membrane; Single-pass type I membrane protein.

**Post-translational modifications:**

Monoubiquitinated, which is promoted by MARCH9 and leads to endocytosis.

**Similarity:**

Belongs to the immunoglobulin superfamily. ICAM family. Contains 5 Ig-like C2-type (immunoglobulin-like) domains.

**SWISS:**

P05362

**Gene ID:**

3383

**Database links:**

[Entrez Gene: 3383](#)Human

[Entrez Gene: 15894](#)Mouse

[Entrez Gene: 25464](#)Rat

[Omim: 147840](#)Human

[Unigene: 643447](#)Human

[SwissProt: P05362](#)Human

[SwissProt: P13597](#)Mouse

[SwissProt: Q00238](#)Rat

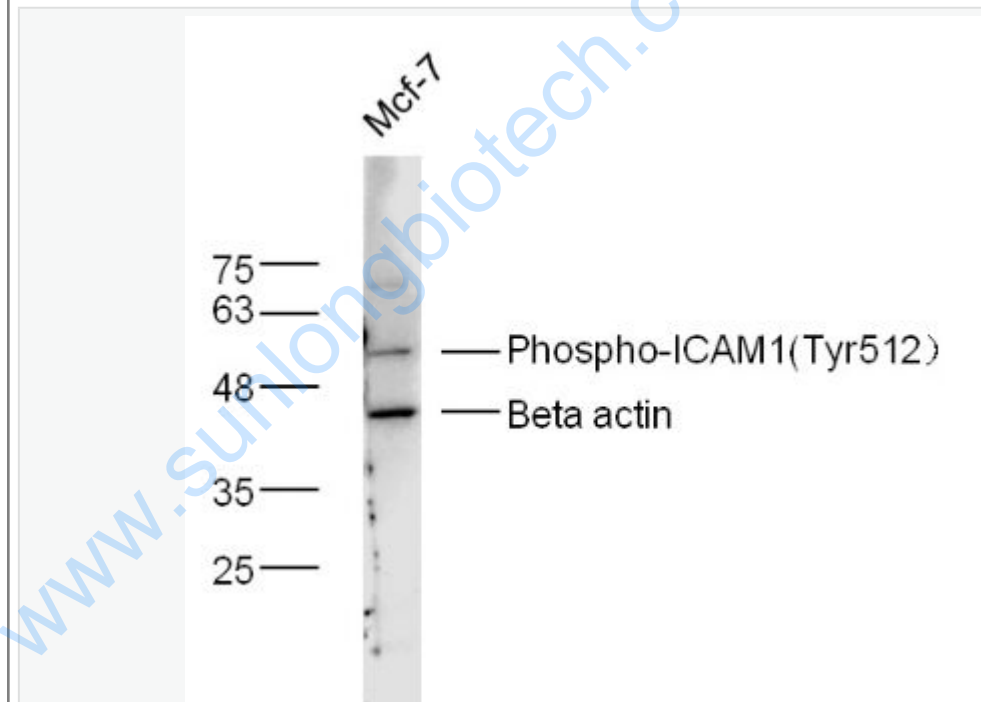
[Unigene: 435508](#)Mouse

[Unigene: 12](#)Rat

**Important Note:**

This product as supplied is intended for research use only, not for use in human, therapeutic or diagnostic applications.

**Picture:**



Sample: MCF-7 Cell (Human) Lysate at 40 ug

Primary: Anti-phospho-ICAM1 (Tyr512) (SL5450R) at 1/300 dilution

Secondary: IRDye800CW Goat Anti-Rabbit IgG at 1/20000 dilution

Predicted band size: 55 kD

	Observed band size: 55 kD
--	---------------------------

[www.sunlongbiotech.com](http://www.sunlongbiotech.com)